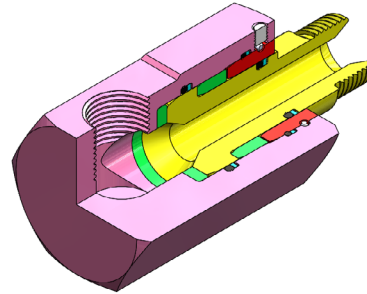


# SWIWEL JOINT - SJE SERIES ELBOW



## TECHNICAL FEATURES AND OPTIONS

## 3D SECTION



Working Temperature  
-20 °C / +80 °C



Material  
Carbon Steel  
Stainless Steel  
Brass



Operating Pressure  
Up to 350 Bar



Available Threads  
BSP



Available Sizes  
From 1/4" to 1"



Sealing Description  
NBR - FKM

## MAIN APPLICATIONS



OIL & GAS



AGRICULTURE



HYDRAULIC INDUSTRY



EARTH MOVING



HYDRAULIC EQUIPMENT



CONCRETE VEHICLES



VEHICLES



CHEMICAL INDUSTRY

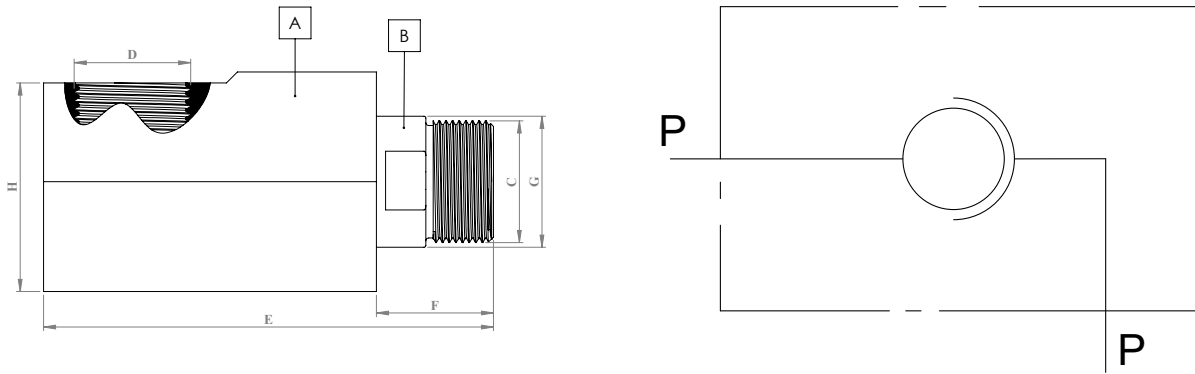
### WARNING

- Please be void of abnormal operating conditions. (For e.g., oscillations, impulse pressures, water hammering, cavitation, and proportions of solid materials and abrasives.)
- Please do not touch the valves at working temperature s lower than -20°C or higher than +50°C
- Please ensure the cleanliness of all connection surfaces to avoid dirt or dust accumulation in the circuit.
- Please ensure the alignment and full connection of the assembly parts.
- Please do not use over the maximum working pressures.
- Please ensure that the OLEOCON product series you have chosen is compatible with the temperature , material, and pressure requirements of your system.
- Please contact with OLEOCON technical support for any further questions.

### INFORMATION

- SJE Series hydraulic swivel joints are mounted between the end of a moving hose and a fixed component to prevent hose's damaging by compensating its torsion and twisting.
- SJE Series hydraulic swivel joints are not suitable for fast and permanent rotations.They are suitable for slow rotations and high pressure applications.
- Simple to use.

## TECHNICAL DRAWING



BODY SIZE	DESCRIPTION	Hex		THREAD SIZE	LENGTH			DIAMETER		WEIGHT				
		mm	inch		mm	inch	mm	inch	kg	lbs				
06	SJE-6-G14M	A	32	1.25	C	1/4	E	73,5	2,89	G	16	0,62	0,32	0,70
		B	13	0,51	D	1/4	F	19,5	0,76	H	31	1,22		
10	SJE-10-G38M	A	36	1,41	C	3/8	E	81	3,18	G	19	0,74	0,44	0,96
		B	15	0,59	D	3/8	F	22	0,86	H	35	1,37		
12,5	SJE-12-G12M	A	41	1,61	C	1/2	E	93	3,66	G	23	0,90	0,64	1,40
		B	19	0,74	D	1/2	F	25	0,98	H	39	1,53		
19	SJE-19-G34M	A	55	2,16	C	3/4	E	108	4,25	G	29	1,14	1,38	3,03
		B	27	1,06	D	3/4	F	28	1,10	H	53	2,08		
25	SJE-25-G1M	A	60	2,36	C	1	E	123	4,84	G	36	1,41	1,78	3,91
		B	32	1,25	D	1	F	32	1,25	H	57	2,24		

ISO 8434-6 - ISO 1179-1

BODY SIZE	WORKING PRESSURE		BURST PRESSURE	
	MPa	PSI	MPa	PSI
6	35	5076	100	14504
10	35	5076	100	14504
12,5	35	5076	100	14504
19	30	4351	100	14504
25	30	4351	100	14504