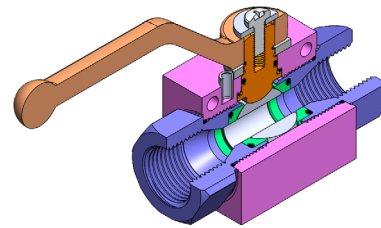
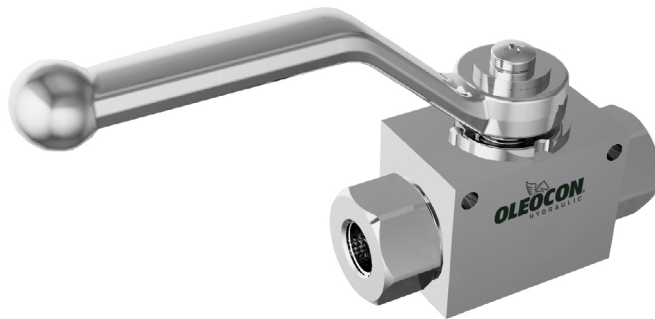


BALL VALVES - KV2 SERIES



TECHNICAL FEATURES AND OPTIONS

3D SECTION



Working Temperature
-20 °C / +80 °C



Material
High Strength
Carbon Steel
Stainless Steel



Operating Pressure
Up to 500 Bar



Available Threads
BSP - NPT - SAE - Metric

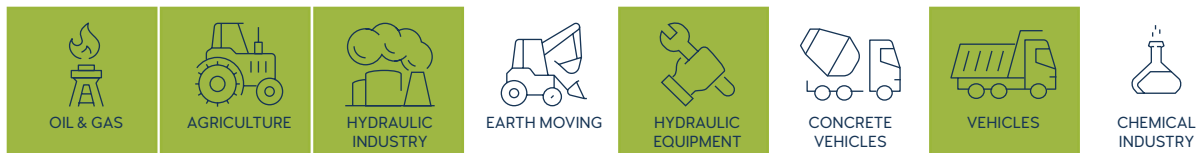


Body Sizes
DN10-25



Sealing Description
NBR - FKM - PTFE - EPDM

MAIN APPLICATIONS



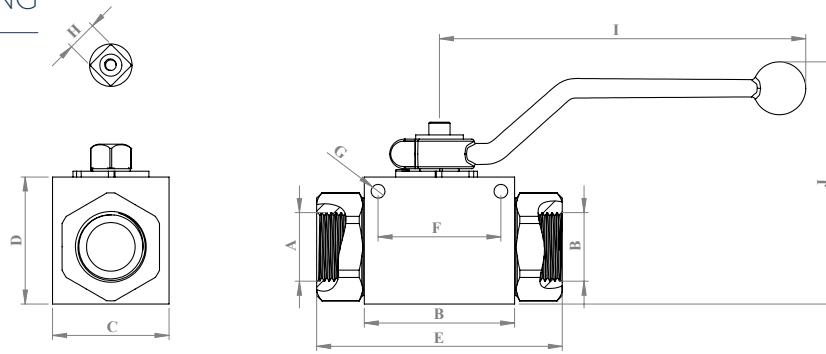
WARNING

- Please ensure that the flow speeds don't go beyond the usual values.
- Please be void of abnormal operating conditions. (For e.g., oscillations, impulse pressures, water hammering, cavitation, and proportions of solid materials and abrasives.)
- Please do not touch the valves at working temperature s lower than -20°C or higher than +50°C
- Please ensure the cleanliness of all connection surfaces to avoid dirt or dust accumulation in the circuit.
- Please ensure the alignment and full connection of the assembly parts.
- Please do not use over the maximum working pressures.
- Please ensure that the OLEOCON product series you have chosen is compatible with the temperature , material, and pressure requirements of your system.
- Please contact with OLEOCON technical support for any further questions.

INFORMATION

- KV2 Series hydraulic 2-Way ball valves are used to either shut-off or open of flow passage and their easy operation provides unrestricted flow.
- Due to their volumetric structure they work rapidly and efficiently and prevent cavitation.
- KV2 Series ball valves can be locked in the open or closed position through locking washer on the circle pin.
- Internal ball is hard chrome coated steel and delrin (POM) seated.

TECHNICAL DRAWING



| SIZE DN | DESCRIPTION | A | B | | C | | D | | E | | F | | G | | H | | I | | J | | WEIGHT | |
|---------|-------------|-------|----|------|----|------|----|------|------|------|------|------|-----|------|----|------|-----|------|-----|------|--------|------|
| | | | mm | inch | mm | inch | mm | inch | mm | inch | mm | inch | mm | inch | mm | inch | mm | inch | mm | inch | kg | inch |
| 10 | KV2-10G14 | 1/4 | 46 | 1.81 | 30 | 1.18 | 35 | 1.37 | 75 | 2.95 | 38 | 1.49 | 4.2 | 0.16 | 10 | 0.39 | 108 | 5.74 | 76 | 2.99 | 0.45 | 0.99 |
| | KV2-10G38 | 3/8 | 46 | 1.81 | 30 | 1.18 | 35 | 1.37 | 75 | 2.95 | 38 | 1.49 | 4.2 | 0.16 | 10 | 0.39 | 108 | 5.74 | 76 | 2.99 | 0.42 | 0.93 |
| 12.5 | KV2-12G12 | 1/2 | 51 | 2 | 35 | 1.37 | 40 | 1.57 | 82.5 | 3.24 | 41.5 | 1.63 | 5 | 0.19 | 10 | 0.39 | 108 | 7.48 | 82 | 3.22 | 0.62 | 1.37 |
| 20 | KV2-20G34 | 3/4 | 61 | 2.4 | 45 | 1.77 | 55 | 2.16 | 92 | 3.62 | 50 | 1.96 | 6.5 | 0.25 | 14 | 0.55 | 175 | 8.7 | 110 | 4.33 | 1.26 | 2.79 |
| 25 | KV2-25G1 | 1 | 71 | 2.79 | 55 | 2.16 | 60 | 2.36 | 116 | 4.56 | 58 | 2.28 | 6.5 | 0.25 | 14 | 0.55 | 175 | 9.17 | 114 | 4.48 | 1.88 | 4.17 |
| | KV2-25G114 | 1 1/4 | 71 | 2.79 | 55 | 2.16 | 60 | 2.36 | 130 | 5.11 | 58 | 2.28 | 6.5 | 0.25 | 14 | 0.55 | 175 | 9.44 | 114 | 4.48 | 1.95 | 4.32 |
| | KV2-25G112 | 1 1/2 | 71 | 2.79 | 55 | 2.16 | 60 | 2.36 | 136 | 5.35 | 58 | 2.28 | 6.5 | 0.25 | 14 | 0.55 | 175 | 9.56 | 114 | 4.48 | 2.05 | 4.55 |

ISO 1179-1 BSPP

| SIZE DN | DESCRIPTION | A | B | | C | | D | | E | | F | | G | | H | | I | | J | | WEIGHT | |
|---------|--------------|-------|----|------|----|------|----|------|------|------|------|------|-----|------|----|------|-----|------|-----|------|--------|------|
| | | | mm | inch | mm | inch | mm | inch | mm | inch | mm | inch | mm | inch | mm | inch | mm | inch | mm | inch | kg | inch |
| 10 | KV2-10NPT14 | 1/4 | 46 | 1.81 | 30 | 1.18 | 35 | 1.37 | 75 | 2.95 | 38 | 1.49 | 4.2 | 0.16 | 10 | 0.39 | 108 | 5.74 | 76 | 2.99 | 0.45 | 0.99 |
| | KV2-10NPT38 | 3/8 | 46 | 1.81 | 30 | 1.18 | 35 | 1.37 | 75 | 2.95 | 38 | 1.49 | 4.2 | 0.16 | 10 | 0.39 | 108 | 5.74 | 76 | 2.99 | 0.42 | 0.93 |
| 12.5 | KV2-12NPT12 | 1/2 | 51 | 2 | 35 | 1.37 | 40 | 1.57 | 82.5 | 3.24 | 41.5 | 1.63 | 5 | 0.19 | 10 | 0.39 | 108 | 7.48 | 82 | 3.22 | 0.62 | 1.37 |
| 20 | KV2-20NPT34 | 3/4 | 61 | 2.4 | 45 | 1.77 | 55 | 2.16 | 92 | 3.62 | 50 | 1.96 | 6.5 | 0.25 | 14 | 0.55 | 175 | 8.7 | 110 | 4.33 | 1.26 | 2.79 |
| 25 | KV2-25NPT1 | 1 | 71 | 2.79 | 55 | 2.16 | 60 | 2.36 | 116 | 4.56 | 58 | 2.28 | 6.5 | 0.25 | 14 | 0.55 | 175 | 9.17 | 114 | 4.48 | 1.88 | 4.17 |
| | KV2-25NPT114 | 1 1/4 | 71 | 2.79 | 55 | 2.16 | 60 | 2.36 | 130 | 5.11 | 58 | 2.28 | 6.5 | 0.25 | 14 | 0.55 | 175 | 9.44 | 114 | 4.48 | 1.95 | 4.32 |
| | KV2-25NPT112 | 1 1/2 | 71 | 2.79 | 55 | 2.16 | 60 | 2.36 | 136 | 5.35 | 58 | 2.28 | 6.5 | 0.25 | 14 | 0.55 | 175 | 9.56 | 114 | 4.48 | 2.05 | 4.55 |

ASME B1.20.1 NPT

| SIZE DN | DESCRIPTION | A | B | | C | | D | | E | | F | | G | | H | | I | | J | | WEIGHT | |
|---------|-------------|-----------|----|------|----|------|----|------|------|------|------|------|-----|------|----|------|-----|------|-----|------|--------|------|
| | | | mm | inch | mm | inch | mm | inch | mm | inch | mm | inch | mm | inch | mm | inch | mm | inch | mm | inch | kg | inch |
| 10 | KV2-10SAE4 | 7/16 UNF | 46 | 1.81 | 30 | 1.18 | 35 | 1.37 | 75 | 2.95 | 38 | 1.49 | 4.2 | 0.16 | 10 | 0.39 | 108 | 5.74 | 76 | 2.99 | 0.45 | 0.99 |
| | KV2-10SAE6 | 9/16 UNF | 46 | 1.81 | 30 | 1.18 | 35 | 1.37 | 75 | 2.95 | 38 | 1.49 | 4.2 | 0.16 | 10 | 0.39 | 108 | 5.74 | 76 | 2.99 | 0.42 | 0.93 |
| 12.5 | KV2-12SAE8 | 3/4 UNF | 51 | 2 | 35 | 1.37 | 40 | 1.57 | 82.5 | 3.24 | 41.5 | 1.63 | 5 | 0.19 | 10 | 0.39 | 108 | 7.48 | 82 | 3.22 | 0.62 | 1.37 |
| 20 | KV2-20SAE12 | 1 1/16 UN | 61 | 2.4 | 45 | 1.77 | 55 | 2.16 | 92 | 3.62 | 50 | 1.96 | 6.5 | 0.25 | 14 | 0.55 | 175 | 8.7 | 110 | 4.33 | 1.26 | 2.79 |
| 25 | KV2-25SAE16 | 1 5/16 UN | 71 | 2.79 | 55 | 2.16 | 60 | 2.36 | 116 | 4.56 | 58 | 2.28 | 6.5 | 0.25 | 14 | 0.55 | 175 | 9.17 | 114 | 4.48 | 1.88 | 4.17 |
| | KV2-25SAE20 | 1 5/8 UN | 71 | 2.79 | 55 | 2.16 | 60 | 2.36 | 130 | 5.11 | 58 | 2.28 | 6.5 | 0.25 | 14 | 0.55 | 175 | 9.44 | 114 | 4.48 | 1.95 | 4.32 |
| | KV2-25SAE24 | 1 7/8 UN | 71 | 2.79 | 55 | 2.16 | 60 | 2.36 | 136 | 5.35 | 58 | 2.28 | 6.5 | 0.25 | 14 | 0.55 | 175 | 9.56 | 114 | 4.48 | 2.05 | 4.55 |

ISO 11926-1

| WORKING PRESSURE | | | | | | | | | | | | | | | |
|------------------|------|-----|------|-----|------|-----|------|-----|------|-----------|------|---------|------|-----|-----|
| 10(6) | | 10 | | 12 | | 20 | | 25 | | 25 (31.5) | | 25 (40) | | | |
| MPa | Psi | MPa | Psi | MPa | Psi | MPa | Psi | MPa | Psi | MPa | Psi | MPa | Psi | MPa | Psi |
| 50 | 7250 | 50 | 7250 | 50 | 7250 | 40 | 5800 | 40 | 5800 | 35 | 5075 | 35 | 5075 | | |