

POPPET TYPE - QCB SERIES

NPT

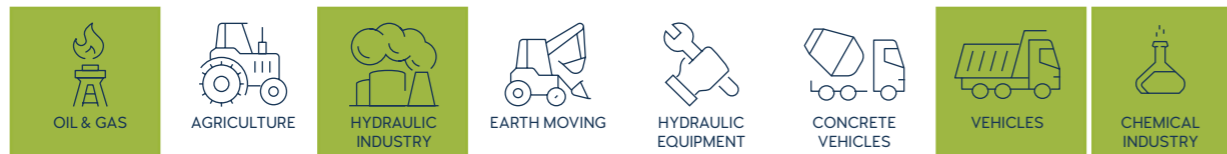


[CLICK HERE FOR 3D SECTION](#)

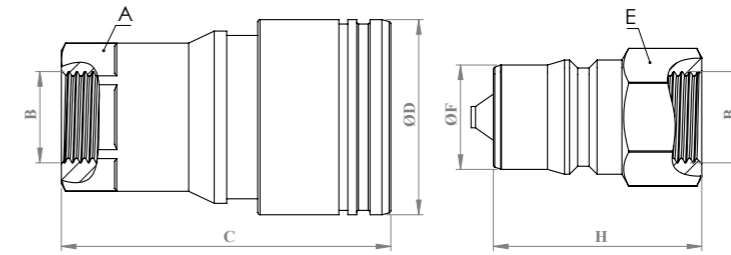
TECHNICAL FEATURES AND OPTIONS

| | | |
|---|---|--|
| Locking Mechanism Locking Ball System | Flow Rate Up to 189 l / min | Material Carbon Steel Stainless Steel Brass |
| Working Temperature -20 °C / +90 °C | Interchange ISO 7241-B | How to Connect Push |
| Operating Pressure Up to 250 Bar | Available Threads BSP - NPT | Under Residual Pressure Connction: not Allowed Disconnection: not Allowed |
| Body Sizes ISO 6.3 - 50 | Sealing Description NBR - FKM | Valve Type Poppet |

MAIN APPLICATIONS



TECHNICAL DRAWING



| BODY SIZE | DESCRIPTION | COUPLING GENDER | Hex | | THREAD SIZE(B) | DIAMETER | | LENGTH | | WEIGHT | | | | |
|-----------|---------------|-----------------|-----|------|----------------|----------|------|--------|------|--------|------|------|------|------|
| | | | mm | inch | | mm | inch | mm | inch | kg | lbs | | | |
| 6.3 | QCB-6A-NPT14 | FEMALE | A | - | 1/4" | D | - | C | - | - | - | - | | |
| | QCB-6B-NPT14 | MALE | E | - | 1/4" | F | - | H | - | - | - | - | | |
| 10 | QCB-10A-NPT38 | FEMALE | A | 24 | 0,94 | 3/8" | D | 32 | 1,25 | C | 58 | 2,28 | 0,16 | 0,35 |
| | QCB-10B-NPT38 | MALE | E | 22 | 0,86 | 3/8" | F | 17,23 | 0,67 | H | 40 | 1,57 | 0,06 | 0,13 |
| 12.5 | QCB-12A-NPT12 | FEMALE | A | 30 | 1,18 | 1/2" | D | 38 | 1,49 | C | 69 | 2,71 | 0,27 | 0,59 |
| | QCB-12B-NPT12 | MALE | E | 27 | 1,06 | 1/2" | F | 20,48 | 0,80 | H | 47 | 1,85 | 0,09 | 0,19 |
| 20 | QCB-20A-NPT34 | FEMALE | A | 38 | 1,49 | 3/4" | D | 46,1 | 1,81 | C | 83 | 3,26 | 0,49 | 1,07 |
| | QCB-20B-NPT34 | MALE | E | 36 | 1,41 | 3/4" | F | 29 | 1,14 | H | 56 | 2,20 | 0,21 | 0,46 |
| 25 | QCB-25A-NPT1 | FEMALE | A | 46 | 1,81 | 1" | D | 54 | 2,12 | C | 99,2 | 3,90 | 0,75 | 1,65 |
| | QCB-25B-NPT1 | MALE | E | 41 | 1,61 | 1" | F | 34,21 | 1,34 | H | 66 | 2,59 | 0,31 | 0,68 |

ASME.B1.20.1.NPT

| BODY SIZE | WORKING PRESSURE | | | | | | BURST PRESSURE | | | | | | |
|-----------|------------------|-----|--------|-----|------|-----|----------------|-----|--------|-----|-------|-----|-------|
| | COUPLE | | FEMALE | | MALE | | COUPLE | | FEMALE | | MALE | | |
| | MPa | PSI | MPa | PSI | MPa | PSI | MPa | PSI | MPa | PSI | MPa | PSI | |
| 6 | 6 | 25 | 3625 | 25 | 3625 | 25 | 3625 | 100 | 14500 | 100 | 14500 | 100 | 14500 |
| 10 | 10 | 25 | 3625 | 25 | 3625 | 25 | 3625 | 100 | 14500 | 100 | 14500 | 100 | 14500 |
| 12.5 | 12.5 | 25 | 3625 | 25 | 3625 | 25 | 3625 | 100 | 14500 | 100 | 14500 | 100 | 14500 |
| 20 | 20 | 16 | 2320 | 16 | 2320 | 16 | 2320 | 64 | 9280 | 64 | 9280 | 64 | 9280 |
| 25 | 25 | 10 | 1450 | 10 | 1450 | 10 | 1450 | 40 | 5800 | 40 | 5800 | 40 | 5800 |
| 40 | 40 | 6.3 | 914 | 6.3 | 914 | 6.3 | 914 | 25 | 3625 | 25 | 3625 | 25 | 3625 |
| 50 | 50 | 5 | 725 | 5 | 725 | 5 | 725 | 20 | 2900 | 20 | 2900 | 20 | 2900 |

INFORMATION

- Do not connect or disconnect under residual pressure.
- Top quality elastomer seals provide maximum sealing.
- The external sealing ring ensures a solid connection and prevents disconnection due to vibration.
- The design prevents pressure drops and turbulences.
- Durable, safe, compact and easy to use design.
- Please clean the mating surfaces thoroughly before connecting, in order to prevent contaminants to enter into the system.
- Please make sure that the male and female parts are aligned properly to achieve full connection.

WARNING

- Connection and disconnection under dynamic pressure is not allowed.
- Connection and disconnection is not allowed when the temperature of the circulating fluid is above 80°C / 176°F.
- Make sure the system pressure is below the maximum working pressure.
- Please ensure that the OLEOCON product you have chosen is compatible with the temperature, material and pressure requirements of your system.
- Please contact OLEOCON technical support for any further questions.