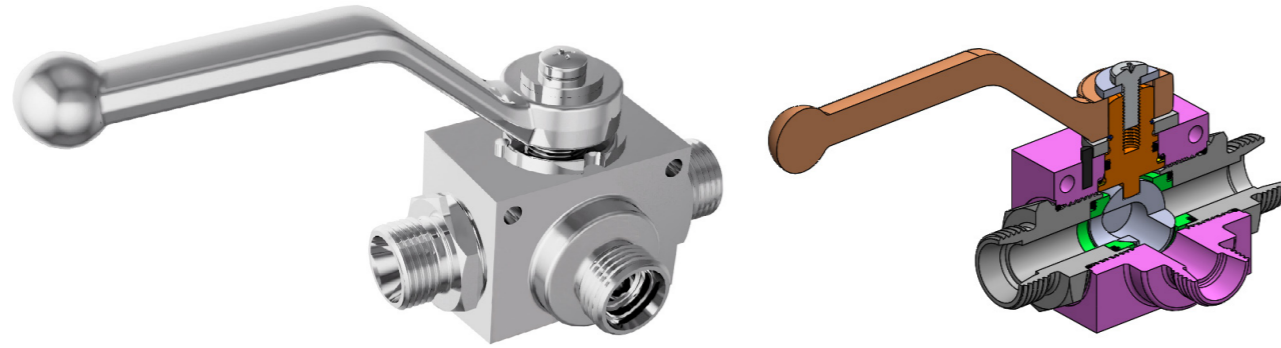


# BALL VALVES - KV3L SERIES

## METRIC



[CLICK HERE FOR 3D SECTION](#)

### TECHNICAL FEATURES AND OPTIONS



**Working Temperature**  
-20 °C / +80 °C



**Material**  
High Strength Carbon Steel  
Stainless Steel



**Operating Pressure**  
Up to 500 Bar



**Available Threads**  
BSP - NPT - SAE - Metric



**Body Sizes**  
DN10-25

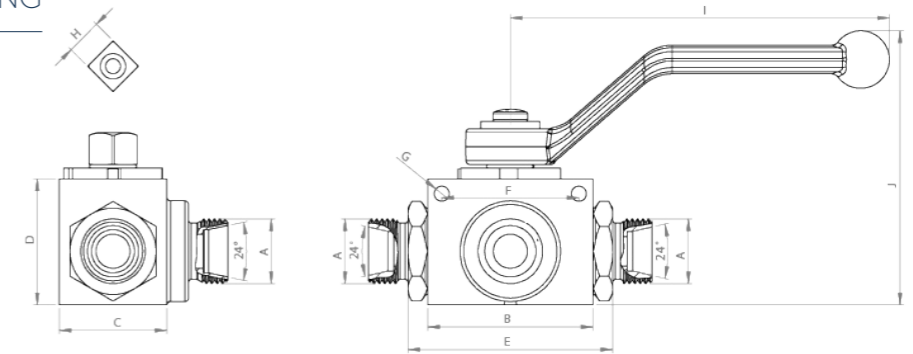


**Sealing Description**  
NBR - FKM - PTFE - EPDM

### MAIN APPLICATIONS



### TECHNICAL DRAWING



| SIZE DN | DESCRIPTION | A       | B  |      | C  |      | D  |      | E   |      | F    |      | G   |      | H  |      | I   |      | J   |      | WEIGHT |      |
|---------|-------------|---------|----|------|----|------|----|------|-----|------|------|------|-----|------|----|------|-----|------|-----|------|--------|------|
|         |             |         | mm | inch | mm | inch | mm | inch | mm  | inch | mm   | inch | mm  | inch | mm | inch | mm  | inch | mm  | inch | kg     | inch |
| 10      | KV3L-10-6L  | M12*1.5 | 46 | 1.81 | 46 | 1.18 | 35 | 1.37 | 78  | 3.07 | 38   | 1.49 | 4.2 | 0.16 | 10 | 0.39 | 108 | 5.74 | 76  | 2.99 | 0.45   | 0.99 |
|         | KV3L-10-8L  | M14*1.5 | 46 | 1.81 | 46 | 1.18 | 35 | 1.37 | 78  | 3.07 | 38   | 1.49 | 4.2 | 0.16 | 10 | 0.39 | 108 | 5.74 | 76  | 2.99 | 0.44   | 0.97 |
|         | KV3L-10-10L | M16*1.5 | 46 | 1.81 | 47 | 1.18 | 35 | 1.37 | 80  | 3.14 | 38   | 1.49 | 4.2 | 0.16 | 10 | 0.39 | 108 | 5.74 | 76  | 2.99 | 0.47   | 1.04 |
|         | KV3L-10-12L | M18*1.5 | 46 | 1.81 | 47 | 1.18 | 35 | 1.37 | 80  | 3.14 | 38   | 1.49 | 4.2 | 0.16 | 10 | 0.39 | 108 | 5.74 | 76  | 2.99 | 0.46   | 1.02 |
| 12.5    | KV3L-12-15L | M22*1.5 | 51 | 2    | 54 | 1.37 | 40 | 1.57 | 89  | 3.5  | 41.5 | 1.63 | 5   | 0.19 | 10 | 0.39 | 108 | 7.48 | 82  | 3.22 | 0.71   | 1.57 |
|         | KV3L-12-18L | M26*1.5 | 51 | 2    | 54 | 1.37 | 40 | 1.57 | 89  | 3.5  | 41.5 | 1.63 | 5   | 0.19 | 10 | 0.39 | 108 | 7.48 | 82  | 3.22 | 0.72   | 1.59 |
| 20      | KV3L-20-22L | M30*2   | 61 | 2.4  | 57 | 1.77 | 55 | 2.16 | 99  | 3.74 | 50   | 1.96 | 6.5 | 0.25 | 14 | 0.55 | 175 | 8.7  | 110 | 4.33 | 1.25   | 2.77 |
|         | KV3L-25-28L | M36*2   | 71 | 2.79 | 85 | 2.16 | 60 | 2.36 | 131 | 5.15 | 58   | 2.28 | 6.5 | 0.25 | 14 | 0.55 | 175 | 9.17 | 114 | 4.48 | 1.46   | 3.24 |
| 25      | KV3L-25-35L | M45*2   | 71 | 2.79 | 86 | 2.16 | 60 | 2.36 | 133 | 5.23 | 58   | 2.28 | 6.5 | 0.25 | 14 | 0.55 | 175 | 9.44 | 114 | 4.48 | 2.75   | 6.10 |
|         | KV3L-25-42L | M52*2   | 71 | 2.79 | 94 | 2.16 | 60 | 2.36 | 148 | 5.82 | 58   | 2.28 | 6.5 | 0.25 | 14 | 0.55 | 175 | 9.56 | 114 | 4.48 | 3.35   | 7.43 |

ISO 8434 - 1

| SIZE DN | DESCRIPTION | A       | B  |      | C   |      | D  |      | E   |      | F    |      | G   |      | H  |      | I   |      | J   |      | WEIGHT |      |
|---------|-------------|---------|----|------|-----|------|----|------|-----|------|------|------|-----|------|----|------|-----|------|-----|------|--------|------|
|         |             |         | mm | inch | mm  | inch | mm | inch | mm  | inch | mm   | inch | mm  | inch | mm | inch | mm  | inch | mm  | inch | kg     | inch |
| 10      | KV3L-10-6S  | M14*1.5 | 46 | 1.81 | 48  | 1.18 | 35 | 1.37 | 82  | 3.22 | 38   | 1.49 | 4.2 | 0.16 | 10 | 0.39 | 108 | 5.74 | 76  | 2.99 | 0.50   | 1.11 |
|         | KV3L-10-8S  | M16*1.5 | 46 | 1.81 | 48  | 1.18 | 35 | 1.37 | 82  | 3.22 | 38   | 1.49 | 4.2 | 0.16 | 10 | 0.39 | 108 | 5.74 | 76  | 2.99 | 0.50   | 1.11 |
|         | KV3L-10-10S | M18*1.5 | 46 | 1.81 | 49  | 1.18 | 35 | 1.37 | 82  | 3.22 | 38   | 1.49 | 4.2 | 0.16 | 10 | 0.39 | 108 | 5.74 | 76  | 2.99 | 0.47   | 1.04 |
|         | KV3L-10-12S | M20*1.5 | 46 | 1.81 | 49  | 1.18 | 35 | 1.37 | 82  | 3.22 | 38   | 1.49 | 4.2 | 0.16 | 10 | 0.39 | 108 | 5.74 | 76  | 2.99 | 0.49   | 1.08 |
| 12.5    | KV3L-12-16S | M24*1.5 | 51 | 2    | 56  | 1.37 | 40 | 1.57 | 93  | 3.66 | 41.5 | 1.63 | 5   | 0.19 | 10 | 0.39 | 108 | 7.48 | 82  | 3.22 | 0.72   | 1.59 |
| 20      | KV3L-20-20S | M30*2   | 61 | 2.4  | 59  | 1.77 | 55 | 2.16 | 103 | 3.89 | 50   | 1.96 | 6.5 | 0.25 | 14 | 0.55 | 175 | 8.7  | 110 | 4.33 | 1.40   | 3.10 |
|         | KV3L-25-25S | M36*2   | 71 | 2.79 | 87  | 2.16 | 60 | 2.36 | 135 | 5.31 | 58   | 2.28 | 6.5 | 0.25 | 14 | 0.55 | 175 | 9.17 | 114 | 4.48 | 1.50   | 3.33 |
| 25      | KV3L-25-30S | M42*2   | 71 | 2.79 | 90  | 2.16 | 60 | 2.36 | 141 | 5.55 | 58   | 2.28 | 6.5 | 0.25 | 14 | 0.55 | 175 | 9.44 | 114 | 4.48 | 2.84   | 6.30 |
|         | KV3L-25-38S | M52*2   | 71 | 2.79 | 100 | 2.16 | 60 | 2.36 | 160 | 6.29 | 58   | 2.28 | 6.5 | 0.25 | 14 | 0.55 | 175 | 9.56 | 114 | 4.48 | 3.40   | 7.54 |

ISO 8434 - 1

| WORKING PRESSURE |      |     |      |     |      |     |      |     |      |           |      |         |      |
|------------------|------|-----|------|-----|------|-----|------|-----|------|-----------|------|---------|------|
| 10(6)            |      | 10  |      | 12  |      | 20  |      | 25  |      | 25 (31.5) |      | 25 (40) |      |
| MPa              | Psi  | MPa | Psi  | MPa | Psi  | MPa | Psi  | MPa | Psi  | MPa       | Psi  | MPa     | Psi  |
| 50               | 7250 | 50  | 7250 | 50  | 7250 | 40  | 5800 | 40  | 5800 | 35        | 5075 | 35      | 5075 |

INFORMATION

- OLEOCON L Port 3 Way Ball Valves direct the flow from the inlet port to one of the 2 outlet ports, without restricting the flow.
- The volumetric structure enables rapid and smooth flow and prevents cavitation.
- KV3 Series Ball Valves can be locked open or closed by changing the position of the lock plate.
- The internal ball is made of hard chrome coated steel and the seat is of delrin (POM).

WARNING

- Please ensure that the flow rate is within the usual values.
- Please do not expose to abnormal operating conditions. (E.g. oscillations, impulse pressures, water hammering, cavitation, and proportions of solid materials and abrasives)
- Please do not touch the valves, when the working temperature is lower than -20°C or higher than +50°C.
- Make sure the system pressure is below the maximum working pressure.
- Please ensure the cleanliness of all connection surfaces to avoid dirt or dust accumulation in the circuit.
- Please ensure the alignment and full connection of the assembly parts.
- Please ensure that the OLEOCON product you have chosen is compatible with the temperature, material and pressure requirements of your system.
- Please contact OLEOCON technical support for any further questions.