

HOSE BURST SAFETY VALVE



[CLICK HERE FOR 3D SECTION](#)

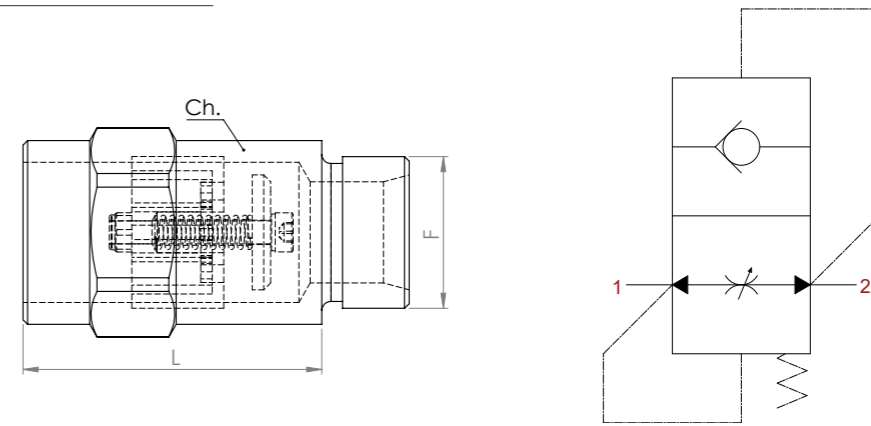
TECHNICAL FEATURES AND OPTIONS

	Working Temperature -20 °C / +80 °C		Flow Rate Up to 180 l / min		Material Carbon Steel Stainless Steel
	Operating Pressure Up to 420 Bar		Available Threads BSP		
	Available Sizes From 1/4" to 1"		Sealing Description NBR - FKM		

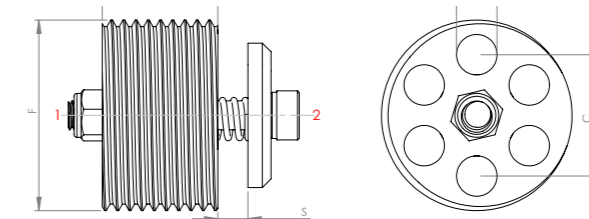
MAIN APPLICATIONS



TECHNICAL DRAWING



ORDERING CODE	F	L	Ch.	WEIGHT (Kg/lbs)
HPV-101	1/4" BSP	47 (1.85)	19 (0.75)	0.08 (0.176)
HPV-102	3/8" BSP	46 (1.82)	22 (0.86)	0.10 (0.22)
HPV-103	1/2" BSP	51 (2.01)	27 (1.06)	0.16 (0.35)
HPV-104	3/4" BSP	62 (2.45)	36 (1.42)	0.34 (0.74)
HPV-105	1" BSP	65 (2.56)	41 (1.62)	0.44 (0.96)



TECHNICAL CHARACTERISTICS						mm (inch)
CODE	F	C	D	L	S	WEIGHT (Kg/lbs)
HPV-101K	1/4" BSP	8.2 (0.32)	2.5 (0.10)	8 (0.32)	1.5 (0.06)	0.006 (0.013)
HPV-102K	3/8" BSP	10.4 (0.41)	3 (0.12)	10.5 (0.41)	2 (0.08)	0.013 (0.028)
HPV-103K	1/2" BSP	12 (0.47)	4 (0.16)	13 (0.51)	2 (0.08)	0.025 (0.055)
HPV-104K	3/4" BSP	15.5 (0.61)	6 (0.24)	18 (0.71)	2 (0.08)	0.05 (0.11)
HPV-105K	1" BSP	21 (0.83)	7 (0.28)	20 (0.79)	4 (0.16)	0.097 (0.21)

ISO 8434-6 - ISO 1179-1

INFORMATION

- OLEOCON Hose Burst Safety Valves prevent the sudden fall of the load in the event of a hose burst, by obstructing the sudden pressure drop in the cylinder.
- Cartridge and Inline Type Hose Burst Safety Valves are mounted directly into the cylinder.
- Hose Burst Safety Valves are normally open valves. However, when a hose bursts, instant increase in the flow overcomes the force of the spring that keeps the valve open, pushes the washer to close the line and cuts the flow.
- Safe and easy-to-use.

WARNING

- Please do not expose to abnormal operating conditions. (E.g. oscillations, impulse pressures, water hammering, cavitation, and proportions of solid materials and abrasives)
- Please do not touch the valve, when the working temperature is lower than -20°C or higher than +50°C.
- Make sure the system pressure is below the maximum working pressure.
- Please ensure the cleanliness of all connection surfaces to avoid dirt or dust accumulation in the circuit.
- Please ensure the alignment and full connection of the assembly parts.
- Please ensure that the OLEOCON product you have chosen is compatible with the temperature, material and pressure requirements of your system.
- Please contact OLEOCON technical support for any further questions.