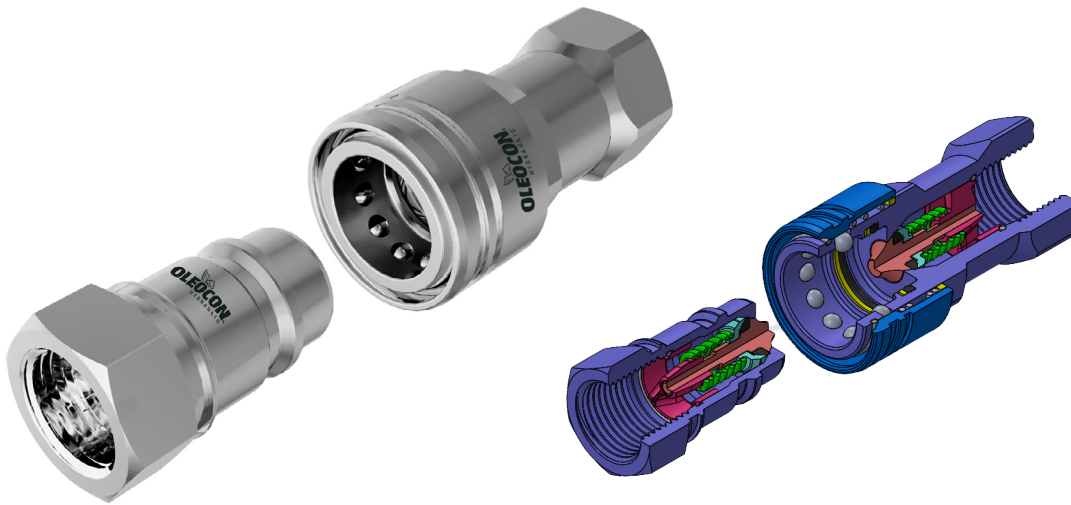


POPET TYPE - QCA SERIES

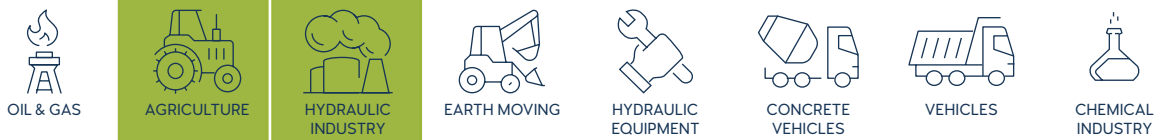


TECHNICAL FEATURES AND OPTIONS

3D SECTION

	Locking Mechanism Screw to Connect		Flow Rate Up to 757 l / min		Material Carbon Steel Stainless Steel Brass
	Working Temperature -20 °C / +90 °C		Interchange ISO 7241-A		Connection System Single Action Sleeve
	Operating Pressure Up to 315 Bar		Available Threads BSP - NPT - Metric - SAE		Connection Under Pressure Connection: not Allowed Disconnection: not Allowed
	Body Sizes ISO 6.3 - 50		Sealing Description NBR - FKM		Valving Style Popet

MAIN APPLICATIONS



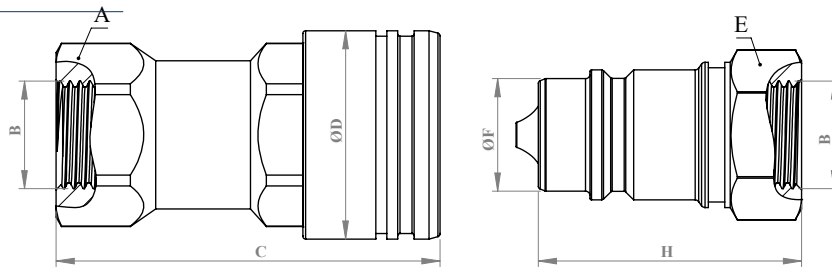
WARNING

- Connection or disconnection during flow and under dynamic pressure is not allowed.
- Connection or Disconnection is not allowed when the internal circuit temperature is higher than 80°C / 176°F
- Usage over the maximum working pressures is not allowed.
- Please ensure that the OLEOCON product series you have chosen is compatible with the temperature , material and pressure requirements of your system.
- Please contact with OLEOCON technical support for any further questions.

INFORMATION

- Do not connect or remove the counterparts under residual pressure.
- Top quality sealing rings provides high level of protection.
- The designs are developed to prevent pressure drops and turbulences.
- Durable and simple to use design.
- Please ensure the cleanliness of all connection surfaces to avoid dirt or dust accumulation in the circuit.
- Please ensure the alignment and full connection of male and female parts.

TECHNICAL DRAWING



BODY SIZE	DESCRIPTION	COUPLING GENDER	Hex		THREAD SIZE(B)	DIAMETER		LENGTH		WEIGHT				
			mm	inch		mm	inch	mm	inch	kg	lbs			
6.3	QCA-6A-G14	FEMALE	A	-	-	1/4"	D	-	-	C	-	-	-	-
	QCA-6B-G14	MALE	E	-	-	1/4"	F	-	-	H	-	-	-	-
10	QCA-10A-G38	FEMALE	A	24	0.94	3/8"	D	32	1.25	C	58	2.28	0.16	0.352
	QCA-10B-G38	MALE	E	22	0.86	3/8"	F	17.23	0.67	H	40	1.57	0.06	0.132
12.5	QCA-12A-G12	FEMALE	A	30	1.18	1/2"	D	38	1.49	C	69	2.71	0.27	0.594
	QCA-12B-G12	MALE	E	27	1.06	1/2"	F	20.48	0.80	H	47	1.85	0.09	0.198
19	QCA-20A-G34	FEMALE	A	38	1.49	3/4"	D	46.1	1.81	C	83	3.26	0.5	1.1
	QCA-20B-G34	MALE	E	36	1.41	3/4"	F	29	1.14	H	56	2.20	0.21	0.462
25	QCA-25A-G1	FEMALE	A	46	1.81	1"	D	54	2.12	C	99.2	3.90	0.75	1.65
	QCA-25B-G1	MALE	E	41	1.61	1"	F	34.21	1.34	H	66	2.59	0.3	0.66
31.5	QCA-31A-G114	FEMALE	A	55	2.16	1 1/4"	D	68	2.67	C	117.2	4.61	1.31	2.882
	QCA-31B-G114	MALE	E	50	1.96	1 1/4"	F	44.9	44.9	H	75	2.95	0.51	1.122
40	QCA-40A-G112	FEMALE	A	70	2.75	1 1/2"	D	83	3.26	C	134.2	5.28	2.66	5.852
	QCA-40B-G112	MALE	E	60	2.36	1 1/2"	F	54.93	2.16	H	84	3.30	0.96	2.112
50	QCA-50A-G2	FEMALE	A	80	3.14	2"	D	99	3.89	C	160.2	6.30	3.89	8.558
	QCA-50B-G2	MALE	E	75	2.95	2"	F	65	2.55	H	97	3.81	1.48	3.256

ISO-1179-1

BODY SIZE	WORKING PRESSURE						BURST PRESSURE					
	COUPLE		FEMALE		MALE		COUPLE		FEMALE		MALE	
	MPa	PSI	MPa	PSI	MPa	PSI	MPa	PSI	MPa	PSI	MPa	PSI
6	-	-	-	-	-	-	-	-	-	-	-	-
10	31.5	4567	31.5	4567	31.5	4567	126	18270	126	18270	126	18270
12.5	25	3625	25	3625	25	3625	100	14500	100	14500	100	14500
19	25	3625	25	3625	25	3625	100	14500	100	14500	100	14500
25	20	2900	20	2900	20	2900	80	11600	80	11600	80	11600
31.5	20	2900	20	2900	20	2900	80	11600	80	11600	80	11600
40	16	2320	16	2320	16	2320	64	9280	64	9280	64	9280
50	10	1450	10	1450	10	1450	40	5800	40	5800	40	5800

BODY SIZE	RATED FLOW			FLUID LOSS PER DISCONNECT ml	CONNECTING FORCE		DISCONNECTING FORCE	
	PRES.DROP (kPa)	L/MIN	GPM		N	lbf	N	lbf
6	-	-	-	-	-	-	-	-
10	180	23	5.06	2	70	15	30	6.75
12.5	200	45	9.91	2.5	90	20.22	45	10.11
19	200	106	23.34	9	140	31.46	50	11.23
25	250	189	41.62	25	190	42.69	55	12.35
31.5	200	288	63.43	60	230	51.68	65	14.6
40	200	379	83.48	90	250	56.17	70	15.73
50	200	757	166.74	150	270	60.67	80	17.97