

POPPET TYPE - QCA SERIES

BSP

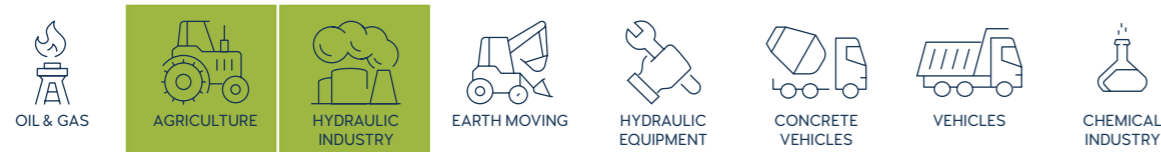


[CLICK HERE FOR 3D SECTION](#)

TECHNICAL FEATURES AND OPTIONS

- Locking Mechanism**
Locking Ball System
- Flow Rate**
Up to 757 l / min
- Material**
Carbon Steel
Stainless Steel
Brass
- Working Temperature**
-20 °C / +90 °C
- Interchange**
ISO 7241-A
- How to Connect**
Push
- Operating Pressure**
Up to 250 Bar
- Available Threads**
BSP - NPT - Metric - SAE
- Under Residual Pressure**
Connction: not Allowed
Disconnection: not Allowed
- Body Sizes**
ISO 6.3 - 50
- Sealing Description**
NBR - FKM
- Valve Type**
Poppet

MAIN APPLICATIONS



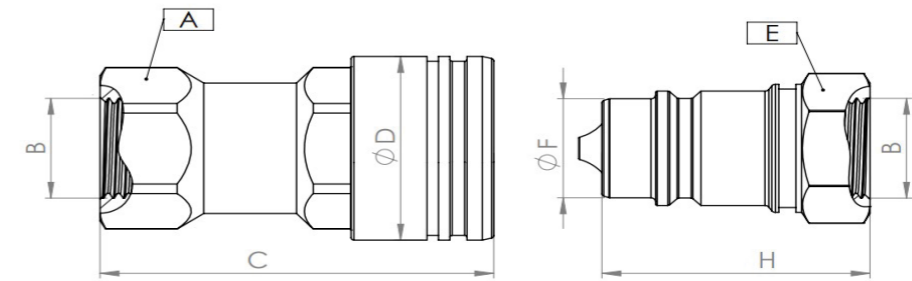
INFORMATION

- Do not connect or disconnect under residual pressure.
- Top quality elastomer seals provide maximum sealing.
- The external sealing ring ensures a solid connection and prevents disconnection due to vibration.
- The design prevents pressure drops and turbulences.
- Durable, safe, compact and easy to use design.
- Please clean the mating surfaces thoroughly before connecting, in order to prevent contaminants to enter into the system.
- Please make sure that the male and female parts are aligned properly to achive full connection.

WARNING

- Connection and disconnection under dynamic pressure is not allowed.
- Connection and disconnection is not allowed when the temperature of the circulating fluid is above 80°C / 176°F.
- Make sure the system pressure is below the maximum working pressure.
- Please ensure that the OLEOCON product you have chosen is compatible with the temperature, material and pressure requirements of your system.
- Please contact OLEOCON technical support for any further questions.

TECHNICAL DRAWING



| BODY SIZE | DESCRIPTION | COUPLING GENDER | Hex | | THREAD SIZE(B) | DIAMETER | | LENGTH | | WEIGHT | | | | |
|-----------|--------------|-----------------|-----|------|----------------|----------|------|--------|------|--------|-------|------|------|-------|
| | | | mm | inch | | mm | inch | mm | inch | kg | lbs | | | |
| 6.3 | QCA-6A-G14 | FEMALE | A | 19 | 0.75 | 1/4" | D | 26 | 1.02 | C | 50 | 1.97 | 0.1 | 0.22 |
| | QCA-6B-G14 | MALE | E | 19 | 0.75 | 1/4" | F | 11.8 | 0.46 | H | 35.5 | 1.4 | 0.04 | 0.09 |
| 10 | QCA-10A-G38 | FEMALE | A | 24 | 0.94 | 3/8" | D | 32 | 1.25 | C | 58 | 2.28 | 0.16 | 0.352 |
| | QCA-10B-G38 | MALE | E | 22 | 0.86 | 3/8" | F | 17.23 | 0.67 | H | 40 | 1.57 | 0.06 | 0.132 |
| 12.5 | QCA-12A-G12 | FEMALE | A | 30 | 1.18 | 1/2" | D | 38 | 1.49 | C | 69 | 2.71 | 0.27 | 0.594 |
| | QCA-12B-G12 | MALE | E | 27 | 1.06 | 1/2" | F | 20.48 | 0.80 | H | 47 | 1.85 | 0.09 | 0.198 |
| 19 | QCA-20A-G34 | FEMALE | A | 38 | 1.49 | 3/4" | D | 46.1 | 1.81 | C | 83 | 3.26 | 0.5 | 1.1 |
| | QCA-20B-G34 | MALE | E | 36 | 1.41 | 3/4" | F | 29 | 1.14 | H | 56 | 2.20 | 0.21 | 0.462 |
| 25 | QCA-25A-G1 | FEMALE | A | 46 | 1.81 | 1" | D | 54 | 2.12 | C | 99.2 | 3.90 | 0.75 | 1.65 |
| | QCA-25B-G1 | MALE | E | 41 | 1.61 | 1" | F | 34.21 | 1.34 | H | 66 | 2.59 | 0.3 | 0.66 |
| 31.5 | QCA-31A-G114 | FEMALE | A | 55 | 2.16 | 1 1/4" | D | 68 | 2.67 | C | 117.2 | 4.61 | 1.31 | 2.882 |
| | QCA-31B-G114 | MALE | E | 50 | 1.96 | 1 1/4" | F | 44.9 | 1.77 | H | 75 | 2.95 | 0.51 | 1.122 |
| 40 | QCA-40A-G112 | FEMALE | A | 70 | 2.75 | 1 1/2" | D | 83 | 3.26 | C | 134.2 | 5.28 | 2.66 | 5.852 |
| | QCA-40B-G112 | MALE | E | 60 | 2.36 | 1 1/2" | F | 54.93 | 2.16 | H | 84 | 3.30 | 0.96 | 2.112 |
| 50 | QCA-50A-G2 | FEMALE | A | 80 | 3.14 | 2" | D | 99 | 3.89 | C | 160.2 | 6.30 | 3.89 | 8.558 |
| | QCA-50B-G2 | MALE | E | 75 | 2.95 | 2" | F | 65 | 2.55 | H | 97 | 3.81 | 1.48 | 3.256 |

ISO-1179-1

| BODY SIZE | WORKING PRESSURE | | | | | | BURST PRESSURE | | | | | |
|-----------|------------------|------|--------|------|------|------|----------------|-------|--------|-------|------|-------|
| | COUPLE | | FEMALE | | MALE | | COUPLE | | FEMALE | | MALE | |
| | MPa | PSI | MPa | PSI | MPa | PSI | MPa | PSI | MPa | PSI | MPa | PSI |
| 6 | 31.5 | 4567 | 31.5 | 4567 | 31.5 | 4567 | 126 | 18270 | 126 | 18270 | 126 | 18270 |
| 10 | 31.5 | 4567 | 31.5 | 4567 | 31.5 | 4567 | 126 | 18270 | 126 | 18270 | 126 | 18270 |
| 12.5 | 25 | 3625 | 25 | 3625 | 25 | 3625 | 100 | 14500 | 100 | 14500 | 100 | 14500 |
| 19 | 25 | 3625 | 25 | 3625 | 25 | 3625 | 100 | 14500 | 100 | 14500 | 100 | 14500 |
| 25 | 20 | 2900 | 20 | 2900 | 20 | 2900 | 80 | 11600 | 80 | 11600 | 80 | 11600 |
| 31.5 | 20 | 2900 | 20 | 2900 | 20 | 2900 | 80 | 11600 | 80 | 11600 | 80 | 11600 |
| 40 | 16 | 2320 | 16 | 2320 | 16 | 2320 | 64 | 9280 | 64 | 9280 | 64 | 9280 |
| 50 | 10 | 1450 | 10 | 1450 | 10 | 1450 | 40 | 5800 | 40 | 5800 | 40 | 5800 |

| BODY SIZE | RATED FLOW | | | FLUID LOSS PER DISCONNECT ml | CONNECTING FORCE | | DISCONNECTING FORCE | |
|-----------|-----------------|-------|--------|---------------------------------|------------------|-------|---------------------|-------|
| | PRES.DROP (kPa) | L/MIN | GPM | | N | lbf | N | lbf |
| 6 | 130 | 3 | 0.66 | 1 | 50 | 11.2 | 20 | 4.5 |
| 10 | 180 | 23 | 5.06 | 2 | 70 | 15 | 30 | 6.75 |
| 12.5 | 200 | 45 | 9.91 | 2.5 | 90 | 20.22 | 45 | 10.11 |
| 19 | 200 | 106 | 23.34 | 9 | 140 | 31.46 | 50 | 11.23 |
| 25 | 250 | 189 | 41.62 | 25 | 190 | 42.69 | 55 | 12.35 |
| 31.5 | 200 | 288 | 63.43 | 60 | 230 | 51.68 | 65 | 14.6 |
| 40 | 200 | 379 | 83.48 | 90 | 250 | 56.17 | 70 | 15.73 |
| 50 | 200 | 757 | 166.74 | 150 | 270 | 60.67 | 80 | 17.97 |