

# POPPET TYPE - QCB SERIES

BSP

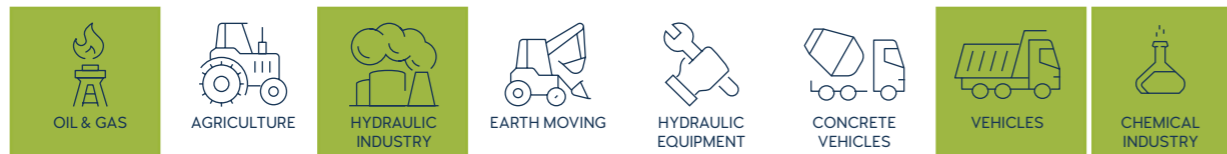


[CLICK HERE FOR 3D SECTION](#)

## TECHNICAL FEATURES AND OPTIONS

|                                                 |                                         |                                                                                        |
|-------------------------------------------------|-----------------------------------------|----------------------------------------------------------------------------------------|
| <b>Locking Mechanism</b><br>Locking Ball System | <b>Flow Rate</b><br>Up to 189 l / min   | <b>Material</b><br>Carbon Steel<br>Stainless Steel<br>Brass                            |
| <b>Working Temperature</b><br>-20 °C / +90 °C   | <b>Interchange</b><br>ISO 7241-B        | <b>How to Connect</b><br>Push                                                          |
| <b>Operating Pressure</b><br>Up to 250 Bar      | <b>Available Threads</b><br>BSP - NPT   | <b>Under Residual Pressure</b><br>Connexion: not Allowed<br>Disconnection: not Allowed |
| <b>Body Sizes</b><br>ISO 6.3 - 50               | <b>Sealing Description</b><br>NBR - FKM | <b>Valve Type</b><br>Poppet                                                            |

## MAIN APPLICATIONS



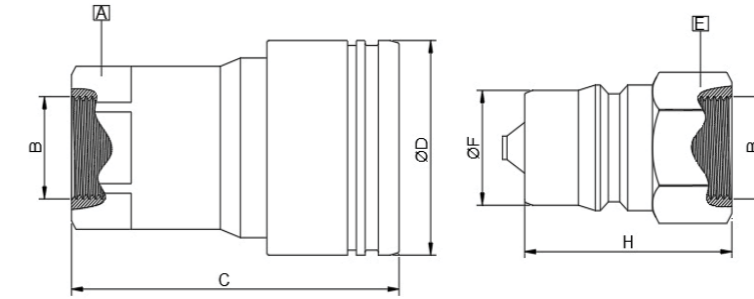
INFORMATION

- Do not connect or disconnect under residual pressure.
- Top quality elastomer seals provide maximum sealing.
- The external sealing ring ensures a solid connection and prevents disconnection due to vibration.
- The design prevents pressure drops and turbulences.
- Durable, safe, compact and easy to use design.
- Please clean the mating surfaces thoroughly before connecting, in order to prevent contaminants to enter into the system.
- Please make sure that the male and female parts are aligned properly to achieve full connection.

WARNING

- Connection and disconnection under dynamic pressure is not allowed.
- Connection and disconnection is not allowed when the temperature of the circulating fluid is above 80°C / 176°F.
- Make sure the system pressure is below the maximum working pressure.
- Please ensure that the OLEOCON product you have chosen is compatible with the temperature, material and pressure requirements of your system.
- Please contact OLEOCON technical support for any further questions.

## TECHNICAL DRAWING



| BODY SIZE | DESCRIPTION | COUPLING GENDER | Hex |      | THREAD SIZE(B) | DIAMETER |      | LENGTH |      | WEIGHT |      |      |      |      |
|-----------|-------------|-----------------|-----|------|----------------|----------|------|--------|------|--------|------|------|------|------|
|           |             |                 | mm  | inch |                | mm       | inch | mm     | inch | kg     | lbs  |      |      |      |
| 6.3       | QCB-6A-G14  | FEMALE          | A   | 22   | 0.87           | 1/4"     | D    | 30     | 1.18 | C      | 63   | 2.48 | 0.15 | 0.33 |
|           | QCB-6B-G14  | MALE            | E   | 19   | 0.75           | 1/4"     | F    | 14,15  | 0.56 | H      | 41   | 1.61 | 0.05 | 0.11 |
| 10        | QCB-10A-G38 | FEMALE          | A   | 24   | 0.94           | 3/8"     | D    | 35     | 1.38 | C      | 64,5 | 2.54 | 0.16 | 0.35 |
|           | QCB-10B-G38 | MALE            | E   | 22   | 0.86           | 3/8"     | F    | 19,05  | 0.75 | H      | 45   | 1.77 | 0.06 | 0.13 |
| 12.5      | QCB-12A-G12 | FEMALE          | A   | 30   | 1.18           | 1/2"     | D    | 44     | 1.73 | C      | 74,3 | 2.92 | 0.27 | 0.59 |
|           | QCB-12B-G12 | MALE            | E   | 27   | 1.06           | 1/2"     | F    | 23,5   | 0.92 | H      | 47   | 1.85 | 0.09 | 0.19 |
| 20        | QCB-20A-G34 | FEMALE          | A   | 38   | 1.49           | 3/4"     | D    | 51     | 2    | C      | 89,8 | 3.53 | 0.49 | 1.07 |
|           | QCB-20B-G34 | MALE            | E   | 36   | 1.41           | 3/4"     | F    | 31,4   | 1.24 | H      | 56   | 2.2  | 0.21 | 0.46 |
| 25        | QCB-25A-G1  | FEMALE          | A   | 46   | 1.81           | 1"       | D    | 60     | 2.36 | C      | 106  | 4.17 | 0.75 | 1.65 |
|           | QCB-25B-G1  | MALE            | E   | 41   | 1.61           | 1"       | F    | 37,5   | 1.49 | H      | 66   | 2.59 | 0.31 | 0.68 |

ISO 1179-1

| BODY SIZE | WORKING PRESSURE |     |        |     |      |     | BURST PRESSURE |     |        |     |       |     |       |
|-----------|------------------|-----|--------|-----|------|-----|----------------|-----|--------|-----|-------|-----|-------|
|           | COUPLE           |     | FEMALE |     | MALE |     | COUPLE         |     | FEMALE |     | MALE  |     |       |
|           | MPa              | PSI | MPa    | PSI | MPa  | PSI | MPa            | PSI | MPa    | PSI | MPa   | PSI |       |
| 6         | 6                | 25  | 3625   | 25  | 3625 | 25  | 3625           | 100 | 14500  | 100 | 14500 | 100 | 14500 |
| 10        | 10               | 25  | 3625   | 25  | 3625 | 25  | 3625           | 100 | 14500  | 100 | 14500 | 100 | 14500 |
| 12.5      | 12,5             | 25  | 3625   | 25  | 3625 | 25  | 3625           | 100 | 14500  | 100 | 14500 | 100 | 14500 |
| 20        | 20               | 16  | 2320   | 16  | 2320 | 16  | 2320           | 64  | 9280   | 64  | 9280  | 64  | 9280  |
| 25        | 25               | 10  | 1450   | 10  | 1450 | 10  | 1450           | 40  | 5800   | 40  | 5800  | 40  | 5800  |
| 40        | 40               | 6,3 | 914    | 6,3 | 914  | 6,3 | 914            | 25  | 3625   | 25  | 3625  | 25  | 3625  |
| 50        | 50               | 5   | 725    | 5   | 725  | 5   | 725            | 20  | 2900   | 20  | 2900  | 20  | 2900  |

| BODY SIZE | RATED FLOW     |       |        | FLUID LOSS PER DISCONNECT | CONNECTING FORCE |       | DISCONNECTING FORCE |       |
|-----------|----------------|-------|--------|---------------------------|------------------|-------|---------------------|-------|
|           | PRESDROP (kPa) | L/MIN | GPM    | ml                        | N                | lbf   | N                   | lbf   |
| 6         | 100            | 12    | 2,64   | 2                         | 50               | 11,2  | 20                  | 4,5   |
| 10        | 180            | 23    | 5,06   | 2                         | 70               | 15    | 30                  | 6,75  |
| 12,5      | 200            | 45    | 9,91   | 2,5                       | 90               | 20,22 | 45                  | 10,11 |
| 20        | 200            | 106   | 23,34  | 9                         | 140              | 31,46 | 50                  | 11,23 |
| 25        | 250            | 189   | 41,62  | 25                        | 190              | 42,69 | 55                  | 12,35 |
| 31,5      | 200            | 288   | 63,43  | 60                        | 230              | 51,68 | 65                  | 14,6  |
| 40        | 200            | 379   | 83,48  | 90                        | 250              | 56,17 | 70                  | 15,73 |
| 50        | 200            | 757   | 166,74 | 150                       | 270              | 60,67 | 80                  | 17,97 |