

FLAT FACE - QCF SERIES

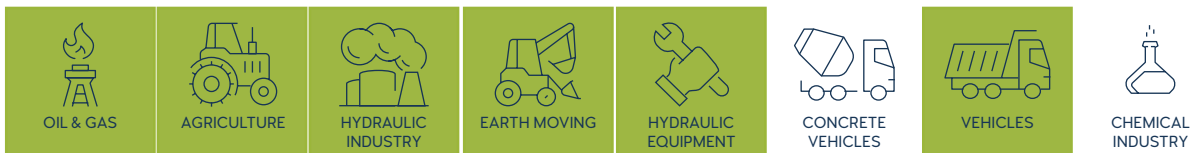


TECHNICAL FEATURES AND OPTIONS

3D SECTION

	Locking Mechanism Locking Ball System + Safety Lock		Flow Rate Up to 189 l / min		Material Carbon Steel Stainless Steel Brass
	Working Temperature -20 °C / +90 °C		Interchange 16028		Connection System Push
	Operating Pressure Up to 250 Bar		Available Threads BSP - NPT - Metric - SAE		Connection Under Pressure Connection: Not Allowed Disconnection: Not Allowed
	Body Sizes ISO 10-25		Sealing Description NBR - FKM		Valving Style Flat Face

MAIN APPLICATIONS



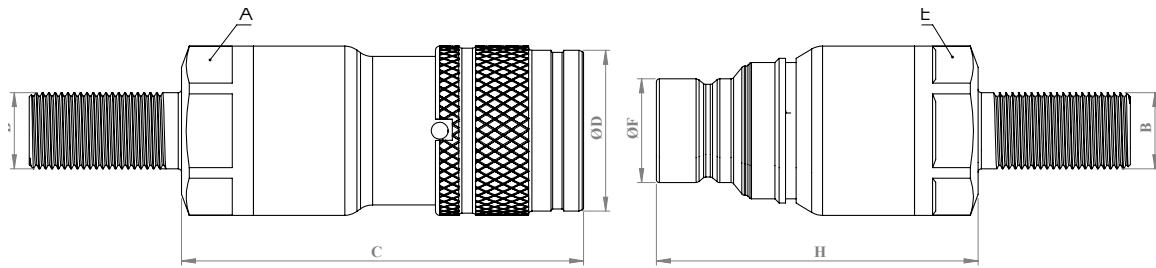
WARNING

- Connection or disconnection during flow and under dynamic pressure is not allowed.
- Connection or Disconnection is not allowed when the internal circuit temperature is higher than 80°C / 176°F
- Usage over the maximum working pressures is not allowed.
- Please ensure that the OLEOCON product series you have chosen is compatible with the temperature, material and pressure requirements of your system.
- Please contact with OLEOCON technical support for any further questions.

INFORMATION

- Flat face design prevents dirt or dust accumulation in the circuit.
- Environment friendly design which prevents fluid spillage during disconnection.
- Top quality sealing rings provides high level of protection.
- Linear flow prevents pressure drops and turbulences.
- Durable, safe, compact and simple to use design.
- Please ensure the cleanliness of all connection surfaces to avoid dirt or dust accumulation in the circuit.
- Please ensure the alignment and full connection of male and female parts.
- Safety lock feature prevents accidental disconnection.

TECHNICAL DRAWING



BODY SIZE	DESCRIPTION	COUPLING GENDER	Hex			THREAD SIZE(B)	DIAMETER			LENGTH		WEIGHT		
				mm	inch			mm	inch		mm	inch	kg	lbs
06	QCF-6A-8S-BH	FEMALE	A	-	-	M16*1.5	D	-	-	C	-	-	-	-
	QCF-6B-8S-BH	MALE	E	-	-	M16*1.5	F	-	-	H	-	-	-	-
10	QCF-10A-12S-BH	FEMALE	A	30	1.18	M20*1.5	D	32	1.25	C	84	3.30	0.44	0.968
	QCF-10B-12S-BH	MALE	E	30	1.18	M20*1.5	F	19.7	0.77	H	74	2.91	0.3	0.66
12.5	QCF-12A-16S-BH	FEMALE	A	36	1.41	M24*1.5	D	38	1.49	C	99	3.89	0.7	1.54
	QCF-12B-16S-BH	MALE	E	36	1.41	M24*1.5	F	24.5	0.96	H	82	3.22	0.47	1.034
19	QCF-19A-20S-BH	FEMALE	A	41	1.61	M30*2	D	46.1	1.81	C	116	4.56	1.09	2.398
	QCF-19B-20S-BH	MALE	E	41	1.61	M30*2	F	29.9	1.17	H	97	3.81	0.7	1.54
25	QCF-25A-25S-BH	FEMALE	A	50	1.96	M36*2	D	55	2.16	C	123	4.84	1.72	3.784
	QCF-25B-25S-BH	MALE	E	50	1.96	M36*2	F	36	1.41	H	106	4.17	1.12	2.464

ISO 8434-1

BODY SIZE	WORKING PRESSURE						BURST PRESSURE					
	COUPLE		FEMALE		MALE		COUPLE		FEMALE		MALE	
	MPa	PSI	MPa	PSI	MPa	PSI	MPa	PSI	MPa	PSI	MPa	PSI
6	-	-	-	-	-	-	-	-	-	-	-	-
10	25	3625	25	3625	25	3625	100	14500	100	14500	100	14500
12.5	25	3625	25	3625	25	3625	100	14500	100	14500	100	14500
19	25	3625	25	3625	25	3625	100	14500	100	14500	100	14500
25	20	2900	20	2900	20	2900	80	11600	80	11600	80	11600

FLAT FACE - QCF SERIES

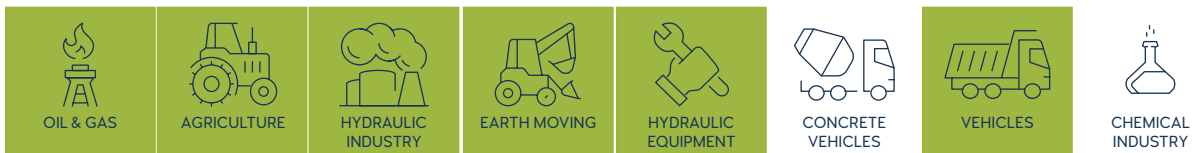


TECHNICAL FEATURES AND OPTIONS

3D SECTION

	Locking Mechanism Locking Ball System + Safety Lock		Flow Rate Up to 189 l / min		Material Carbon Steel Stainless Steel Brass
	Working Temperature -20 °C / +90 °C		Interchange 16028		Connection System Push
	Operating Pressure Up to 250 Bar		Available Threads BSP - NPT - Metric - SAE		Connection Under Pressure Connection: Not Allowed Disconnection: Not Allowed
	Body Sizes ISO 10-25		Sealing Description NBR - FKM		Valving Style Flat Face

MAIN APPLICATIONS



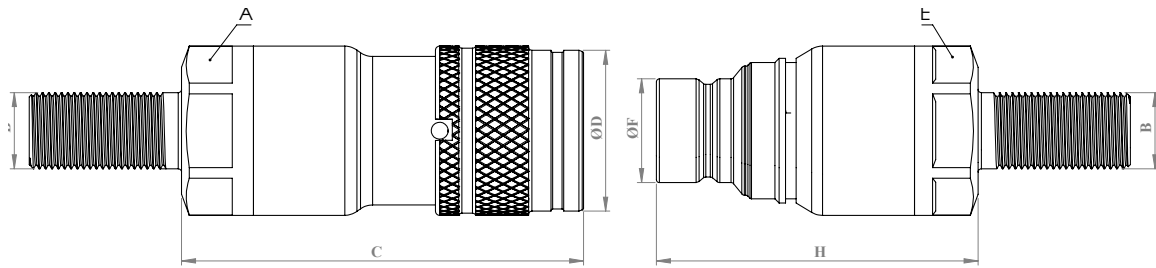
WARNING

- Connection or disconnection during flow and under dynamic pressure is not allowed.
- Connection or Disconnection is not allowed when the internal circuit temperature is higher than 80°C / 176°F
- Usage over the maximum working pressures is not allowed.
- Please ensure that the OLEOCON product series you have chosen is compatible with the temperature , material and pressure requirements of your system.
- Please contact with OLEOCON technical support for any further questions.

INFORMATION

- Flat face design prevents dirt or dust accumulation in the circuit.
- Environment friendly design which prevents fluid spillage during disconnection.
- Top quality sealing rings provides high level of protection.
- Linear flow prevents pressure drops and turbulences.
- Durable, safe, compact and simple to use design.
- Please ensure the cleanliness of all connection surfaces to avoid dirt or dust accumulation in the circuit.
- Please ensure the alignment and full connection of male and female parts.
- Safety lock feature prevents accidental disconnection.

TECHNICAL DRAWING



BODY SIZE	DESCRIPTION	COUPLING GENDER	Hex		THREAD SIZE(B)	DIAMETER			LENGTH		WEIGHT			
				mm		inch		mm	inch	mm	inch	kg	lbs	
06	QCF-6A-8L-BH	FEMALE	A	-	-	M14*1.5	D	-	-	C	-	-	-	-
	QCF-6B-8L-BH	MALE	E	-	-	M14*1.5	F	-	-	H	-	-	-	-
	QCF-6A-8L-BH	FEMALE	A	-	-	M16*1.5								
	QCF-6A-8L-BH	MALE	E	-	-	M16*1.5								
10	QCF-10A-10L-BH	FEMALE	A	30	1.18	M16*1.5	D	32	1.25	C	84	3.30	0.41	0.902
	QCF-10B-10L-BH	MALE	E	30	1.18	M16*1.5	F	19.7	0.77	H	74	2.91	0.27	0.594
	QCF-10A-12L-BH	FEMALE	A	30	1.18	M18*1.5	D	32	1.25	C	83	3.26	0.41	0.902
	QCF-10B-12L-BH	MALE	E	30	1.18	M18*1.5	F	19.7	0.77	H	73	2.87	0.27	0.594
	QCF-10A-15L-BH	FEMALE	A	30	1.18	M22*1.5	D	32	1.25	C	83	3.26	0.44	0.968
	QCF-10B-15L-BH	MALE	E	30	1.18	M22*1.5	F	19.7	0.77	H	73	2.87	0.29	0.638
12.5	QCF-12A-12L-BH	FEMALE	A	36	1.41	M18*1.5	D	38	1.49	C	99	3.89	0.66	1.452
	QCF-12B-12L-BH	MALE	E	36	1.41	M18*1.5	F	24.5	0.96	H	82	3.22	0.43	0.946
	QCF-12A-15L-BH	FEMALE	A	36	1.41	M22*1.5	D	38	1.49	C	98	3.85	0.68	1.496
	QCF-12B-15L-BH	MALE	E	36	1.41	M22*1.5	F	24.5	0.96	H	81	3.18	0.45	0.99
	QCF-12A-18L-BH	FEMALE	A	36	1.41	M26*1.5	D	38	1.49	C	98	3.85	0.7	1.54
19	QCF-12B-18L-BH	MALE	E	36	1.41	M26*1.5	F	24.5	0.96	H	81	3.18	0.47	1.034
	QCF-19A-18L-BH	FEMALE	A	41	1.61	M26*1.5	D	46.1	1.81	C	116	4.56	1.05	2.31
	QCF-19B-18L-BH	MALE	E	41	1.61	M26*1.5	F	29.9	1.17	H	97	3.81	0.67	1.474
	QCF-19A-22L-BH	FEMALE	A	41	1.61	M30*2	D	46.1	1.81	C	115	4.52	1.06	2.332
25	QCF-19B-22L-BH	MALE	E	41	1.61	M30*2	F	29.9	1.17	H	96	3.77	0.68	1.496
	QCF-25A-28L-BH	FEMALE	A	50	1.96	M36*2	D	55	2.16	C	123	4.84	1.63	3.586
	QCF-25B-28L-BH	MALE	E	50	1.96	M36*2	F	36	1.41	H	106	4.17	1.04	2.288

ISO8434-1

BODY SIZE	WORKING PRESSURE						BURST PRESSURE					
	COUPLE		FEMALE		MALE		COUPLE		FEMALE		MALE	
	MPa	PSI	MPa	PSI	MPa	PSI	MPa	PSI	MPa	PSI	MPa	PSI
6	-	-	-	-	-	-	-	-	-	-	-	-
10	25	3625	25	3625	25	3625	100	14500	100	14500	100	14500
12.5	25	3625	25	3625	25	3625	100	14500	100	14500	100	14500
19	25	3625	25	3625	25	3625	100	14500	100	14500	100	14500
25	20	2900	20	2900	20	2900	80	11600	80	11600	80	11600