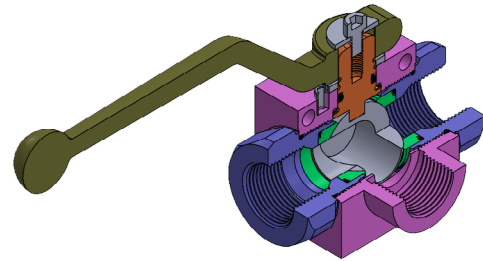


BALL VALVES - KV3T SERIES



TECHNICAL FEATURES AND OPTIONS

3D SECTION



Working Temperature
-20 °C / +80 °C



Material
High Strength
Carbon Steel
Stainless Steel



Operating Pressure
Up to 500 Bar



Available Threads
BSP - NPT - SAE - Metric











Body Sizes
DN10-25



Sealing Description
NBR - FKM - PTFE - EPDM

MAIN APPLICATIONS

 OIL & GAS	 AGRICULTURE	 HYDRAULIC INDUSTRY	 EARTH MOVING	 HYDRAULIC EQUIPMENT	 CONCRETE VEHICLES	 VEHICLES	 CHEMICAL INDUSTRY
--	--	---	---	--	---	---	--

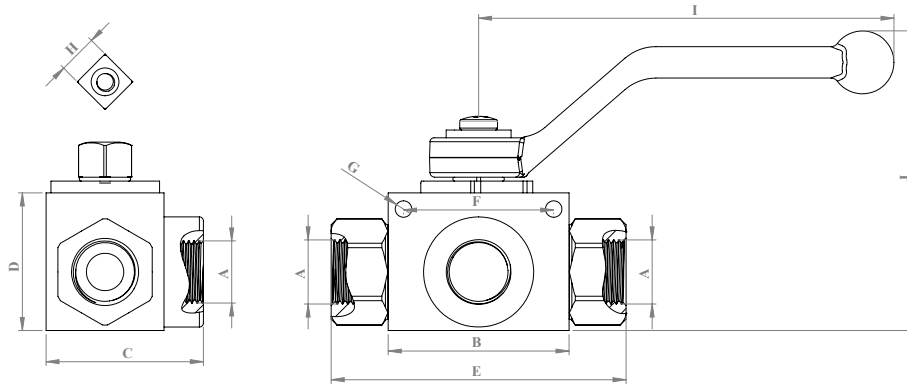
WARNING

- Please ensure that the flow speeds don't go beyond the usual values.
- Please be void of abnormal operating conditions. (For e.g., oscillations, impulse pressures, water hammering, cavitation, and proportions of solid materials and abrasives.)
- Please do not touch the valves at working temperatures lower than -20°C or higher than +50°C
- Please ensure the cleanliness of all connection surfaces to avoid dirt or dust accumulation in the circuit.
- Please ensure the alignment and full connection of the assembly parts.
- Please do not use over the maximum working pressures.
- Please ensure that the OLEOCON product series you have chosen is compatible with the temperature, material, and pressure requirements of your system.
- Please contact with OLEOCON technical support for any further questions.

INFORMATION

- KV3 Series hydraulic 3-Way ball valves are used to either shut-off or open of flow passage and their easy operation provides unrestricted flow.
- Due to their volumetric structure they work rapidly and efficiently and prevent cavitation.
- KV3 Series ball valves can be locked in the open or closed position through locking washer on the circle pin.
- Internal ball is hard chrome coated steel and delrin (POM) seated.

TECHNICAL DRAWING



SIZE DN	DESCRIPTION	A	B		C		D		E		F		G		H		I		J		WEIGHT	
			mm	inch	mm	inch	mm	inch	mm	inch	mm	inch	mm	inch	mm	inch	mm	inch	mm	inch	kg	inch
10	KV3T-10G14	1/4	46	1.81	40	1.18	35	1.37	75	2.95	38	1.49	4.2	0.16	10	0.39	108	5.74	76	2.99	0.48	1.06
	KV3T-10G38	3/8	46	1.81	40	1.18	35	1.37	75	2.95	38	1.49	4.2	0.16	10	0.39	108	5.74	76	2.99	0.45	0.99
12.5	KV3T-12G12	1/2	51	2	50	1.37	40	1.57	82.5	3.24	41.5	1.63	5	0.19	10	0.39	108	7.48	82	3.22	0.66	1.46
20	KV3T-20G34	3/4	61	2.4	60	1.77	55	2.16	92	3.62	50	1.96	6.5	0.25	14	0.55	175	8.7	110	4.33	1.31	2.90
25	KV3T-25G1	1	71	2.79	76	2.16	60	2.36	116	4.56	58	2.28	6.5	0.25	14	0.55	175	9.17	114	4.48	1.87	4.15
	KV3T-25G114	1 1/4	71	2.79	90	2.16	60	2.36	130	5.11	58	2.28	6.5	0.25	14	0.55	175	9.44	114	4.48	2.80	6.21
	KV3T-25G112	1 1/2	71	2.79	90	2.16	60	2.36	136	5.35	58	2.28	6.5	0.25	14	0.55	175	9.56	114	4.48	2.90	6.43

ISO 1179-1 BSPP

SIZE DN	DESCRIPTION	A	B		C		D		E		F		G		H		I		J		WEIGHT	
			mm	inch	mm	inch	mm	inch	mm	inch	mm	inch	mm	inch	mm	inch	mm	inch	mm	inch	kg	inch
10	KV3T-10NPT14	1/4	46	1.81	40	1.18	35	1.37	75	2.95	38	1.49	4.2	0.16	10	0.39	108	5.74	76	2.99	0.48	1.06
	KV3T-10NPT38	3/8	46	1.81	40	1.18	35	1.37	75	2.95	38	1.49	4.2	0.16	10	0.39	108	5.74	76	2.99	0.45	0.99
12.5	KV3T-12NPT12	1/2	51	2	50	1.37	40	1.57	82.5	3.24	41.5	1.63	5	0.19	10	0.39	108	7.48	82	3.22	0.66	1.46
20	KV3T-20NPT34	3/4	61	2.4	60	1.77	55	2.16	92	3.62	50	1.96	6.5	0.25	14	0.55	175	8.7	110	4.33	1.31	2.90
25	KV3T-25NPT1	1	71	2.79	76	2.16	60	2.36	116	4.56	58	2.28	6.5	0.25	14	0.55	175	9.17	114	4.48	1.87	4.15
	KV3T-25NPT114	1 1/4	71	2.79	90	2.16	60	2.36	130	5.11	58	2.28	6.5	0.25	14	0.55	175	9.44	114	4.48	2.80	6.21
	KV3T-25NPT112	1 1/2	71	2.79	90	2.16	60	2.36	136	5.35	58	2.28	6.5	0.25	14	0.55	175	9.56	114	4.48	2.90	6.43

ASME B1.20.1 NPT

SIZE DN	DESCRIPTION	A	B		C		D		E		F		G		H		I		J		WEIGHT	
			mm	inch	mm	inch	mm	inch	mm	inch	mm	inch	mm	inch	mm	inch	mm	inch	mm	inch	kg	inch
10	KV3T-10SAE4	7/16 UNF	46	1.81	40	1.18	35	1.37	75	2.95	38	1.49	4.2	0.16	10	0.39	108	5.74	76	2.99	0.48	1.06
	KV3T-10SAE6	9/16 UNF	46	1.81	40	1.18	35	1.37	75	2.95	38	1.49	4.2	0.16	10	0.39	108	5.74	76	2.99	0.45	0.99
12.5	KV3T-12SAE8	3/4 UNF	51	2	50	1.37	40	1.57	82.5	3.24	41.5	1.63	5	0.19	10	0.39	108	7.48	82	3.22	0.66	1.46
20	KV3T-20SAE12	1 1/16 UN	61	2.4	60	1.77	55	2.16	92	3.62	50	1.96	6.5	0.25	14	0.55	175	8.7	110	4.33	1.31	2.90
25	KV3T-25SAE16	1 5/16 UN	71	2.79	76	2.16	60	2.36	116	4.56	58	2.28	6.5	0.25	14	0.55	175	9.17	114	4.48	1.87	4.15
	KV3T-25SAE20	1 5/8 UN	71	2.79	90	2.16	60	2.36	130	5.11	58	2.28	6.5	0.25	14	0.55	175	9.44	114	4.48	2.80	6.21
	KV3T-25SAE24	1 7/8 UN	71	2.79	90	2.16	60	2.36	136	5.35	58	2.28	6.5	0.25	14	0.55	175	9.56	114	4.48	2.90	6.43

ISO 11926-1

WORKING PRESSURE													
10(6)		10		12		20		25		25 (31.5)		25 (40)	
MPa	Psi	MPa	Psi	MPa	Psi	MPa	Psi	MPa	Psi	MPa	Psi	MPa	Psi
50	7250	50	7250	50	7250	40	5800	40	5800	35	5075	35	5075