

PUSH PULL



TECHNICAL FEATURES AND OPTIONS

3D SECTION



Locking Mechanism
Locking Ball System



Flow Rate
Up to 45 l / min



Material
Carbon Steel
Stainless Steel
Brass



Working Temperature
-20 °C / +100 °C



Interchange
ISO 7241-A



Connection System
Single Action Sleeve



Operating Pressure
Up to 315 Bar



Available Threads
BSP - Metric



Connection Under Pressure
Connction: not Allowed
Disconnection: not Allowed



Body Sizes
ISO 12.5



Sealing Description
NBR - FKM



Valving Style
Popet

MAIN APPLICATIONS



OIL & GAS



AGRICULTURE



HYDRAULIC INDUSTRY



EARTH MOVING



HYDRAULIC EQUIPMENT



CONCRETE VEHICLES



VEHICLES



CHEMICAL INDUSTRY

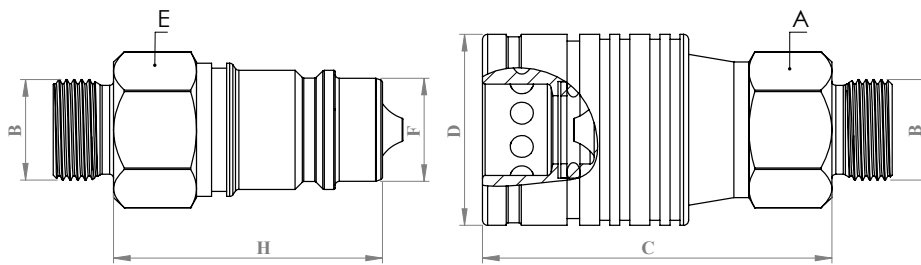
WARNING

- Connection or disconnection during flow and under dynamic pressure is not allowed.
- Connection or Disconnection is not allowed when the internal circuit temperature is higher than 80°C / 176°F
- Usage over the maximum working pressures is not allowed.
- Please ensure that the OLEOCON product series you have chosen is compatible with the temperature , material and pressure requirements of your system.
- Please contact with OLEOCON technical support for any further questions.

INFORMATION

- Do not connect or remove the counterparts under residual pressure.
- Top quality sealing rings provides high level of protection.
- The designs are developed to prevent pressure drops and turbulences.
- Durable and simple to use design.
- Please ensure the cleanliness of all connection surfaces to avoid dirt or dust accumulation in the circuit.
- Please ensure the alignment and full connection of male and female parts.

TECHNICAL DRAWING



BODY SIZE	DESCRIPTION	COUPLING GENDER	THREAD TYPE	Hex		THREAD SIZE(B)	DIAMETER		LENGTH		WEIGHT				
													kg	lbs	
12.5	PP-12A-12L	FEMALE	M	A	27	106	18*1.5	D	38	1.49	C	80.5	3.16	0.30	0.66
	PP-12B-12L	MALE	M	E	27	106	18*1.5	F	20.48	0.8	H	64.5	2.53	0.11	0.24
	PP-12A-12S	FEMALE	M	A	27	106	20*1.5	D	38	1.49	C	81.5	3.2	0.31	0.68
	PP-12B-12S	MALE	M	E	27	106	20*1.5	F	20.48	0.8	H	65.5	2.57	0.12	0.26
	PP-12A-15L	FEMALE	M	A	27	106	22*1.5	D	38	1.49	C	81.5	3.2	0.31	0.68
	PP-12B-15L	MALE	M	E	27	106	22*1.5	F	20.48	0.8	H	65.5	2.57	0.12	0.26
	PP-12A-16S	FEMALE	M	A	27	106	24*1.5	D	38	1.49	C	83.5	3.28	0.31	0.68
	PP-12B-16S	MALE	M	E	27	106	24*1.5	F	20.48	0.8	H	67.5	2.65	0.12	0.26

ISO 8434-1

BODY SIZE	WORKING PRESSURE						BURST PRESSURE					
	COUPLE		FEMALE		MALE		COUPLE		FEMALE		MALE	
	MPa	PSI	MPa	PSI	MPa	PSI	MPa	PSI	MPa	PSI	MPa	PSI
12.5	25	3625	25	3625	25	3625	100	14500	100	14500	100	14500

BODY SIZE	RATED FLOW			FLUID LOSS PER DIS-CONNECT	CONNECTING FORCE		DISCONNECTING FORCE	
	PRES.DROP (kPa)	L/MIN	GPM		ml	N	lbf	N
12.5	200	45	9.91	2.5	90	20.22	45	10.11