

# FLAT FACE - QCF SERIES

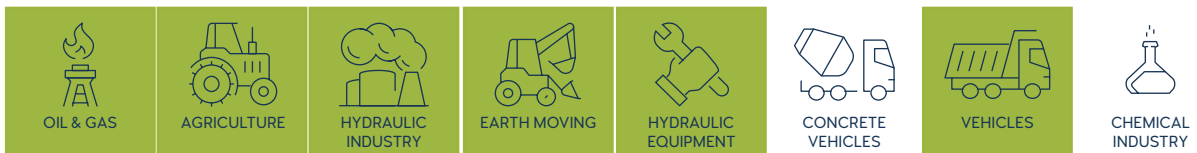


## TECHNICAL FEATURES AND OPTIONS

## 3D SECTION

	<b>Locking Mechanism</b> Locking Ball System + Safety Lock		<b>Flow Rate</b> Up to 189 l / min		<b>Material</b> Carbon Steel Stainless Steel Brass
	<b>Working Temperature</b> -20 °C / +90 °C		<b>Interchange</b> 16028		<b>Connection System</b> Push
	<b>Operating Pressure</b> Up to 250 Bar		<b>Available Threads</b> BSP - NPT - Metric - SAE		<b>Connection Under Pressure</b> Connection: Not Allowed Disconnection: Not Allowed
	<b>Body Sizes</b> ISO 10-25		<b>Sealing Description</b> NBR - FKM		<b>Valving Style</b> Flat Face

## MAIN APPLICATIONS



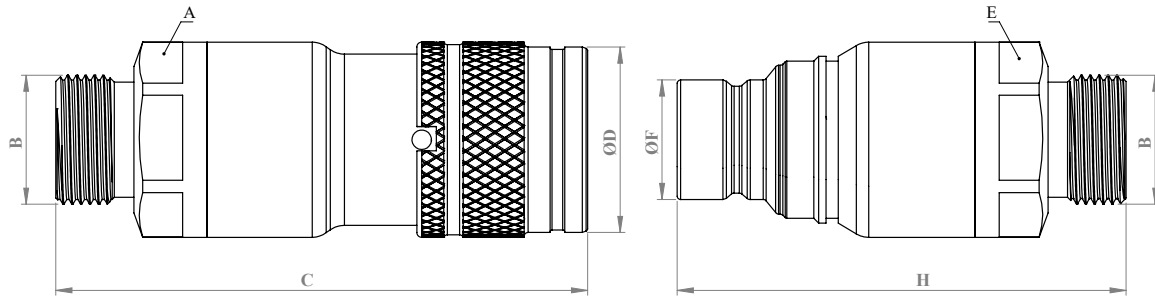
**WARNING**

- Connection or disconnection during flow and under dynamic pressure is not allowed.
- Connection or Disconnection is not allowed when the internal circuit temperature is higher than 80°C / 176°F
- Usage over the maximum working pressures is not allowed.
- Please ensure that the OLEOCON product series you have chosen is compatible with the temperature , material and pressure requirements of your system.
- Please contact with OLEOCON technical support for any further questions.

**INFORMATION**

- Flat face design prevents dirt or dust accumulation in the circuit.
- Environment friendly design which prevents fluid spillage during disconnection.
- Top quality sealing rings provides high level of protection.
- Linear flow prevents pressure drops and turbulences.
- Durable, safe, compact and simple to use design.
- Please ensure the cleanliness of all connection surfaces to avoid dirt or dust accumulation in the circuit.
- Please ensure the alignment and full connection of male and female parts.
- Safety lock feature prevents accidental disconnection.

## TECHNICAL DRAWING

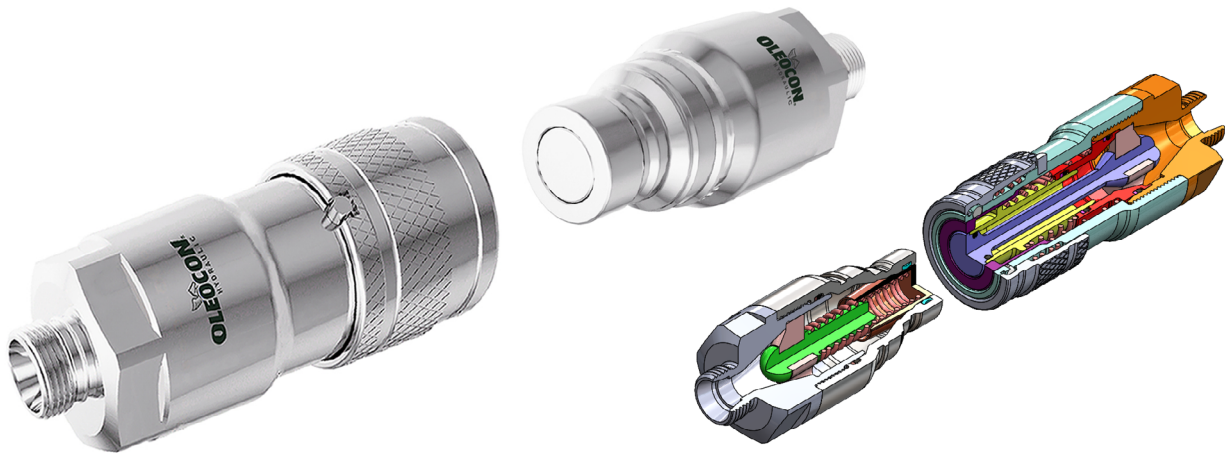


BODY SIZE	DESCRIPTION	COUPLING GENDER	Hex			THREAD SIZE(B)	DIAMETER			LENGTH		WEIGHT		
				mm	inch			mm	inch		mm	inch	kg	lbs
06	QCF-6A-8S	FEMALE	A	-	-	M16*1.5	D	-	-	C	-	-	-	-
	QCF-6B-8S	MALE	E	-	-	M16*1.5	F	-	-	H	-	-	-	-
10	QCF-10A-12S	FEMALE	A	30	1.18	M20*1.5	D	32	1.25	C	84	3.30	0.39	0.86
	QCF-10B-12S	MALE	E	30	1.18	M20*1.5	F	19.7	0.77	H	74	2.91	0.25	0.55
12.5	QCF-12A-16S	FEMALE	A	36	1.41	M24*1.5	D	38	1.49	C	99	3.89	0.64	1.41
	QCF-12B-16S	MALE	E	36	1.41	M24*1.5	F	24.5	0.96	H	82	3.22	0.4	0.88
19	QCF-19A-20S	FEMALE	A	41	1.61	M30*2	D	46.1	1.81	C	116	4.56	0.99	2.18
	QCF-19B-20S	MALE	E	41	1.61	M30*2	F	29.9	1.17	H	97	3.81	0.61	1.34
25	QCF-25A-25S	FEMALE	A	50	1.96	M36*2	D	55	2.16	C	123	4.84	1.58	3.48
	QCF-25B-25S	MALE	E	50	1.96	M36*2	F	36	1.41	H	106	4.17	0.99	2.18

ISO 8434-1

BODY SIZE	WORKING PRESSURE						BURST PRESSURE					
	COUPLE		FEMALE		MALE		COUPLE		FEMALE		MALE	
	MPa	PSI	MPa	PSI	MPa	PSI	MPa	PSI	MPa	PSI	MPa	PSI
6	-	-	-	-	-	-	-	-	-	-	-	-
10	25	3625	25	3625	25	3625	100	14500	100	14500	100	14500
12.5	25	3625	25	3625	25	3625	100	14500	100	14500	100	14500
19	25	3625	25	3625	25	3625	100	14500	100	14500	100	14500
25	20	2900	20	2900	20	2900	80	11600	80	11600	80	11600

# FLAT FACE - QCF SERIES

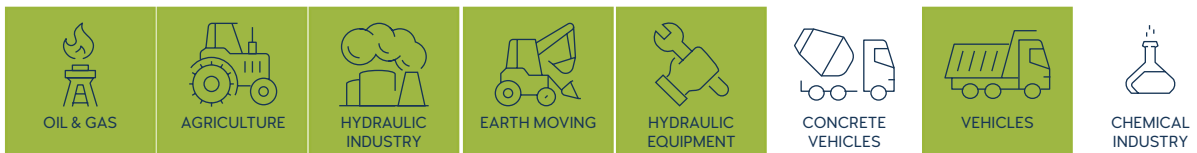


## TECHNICAL FEATURES AND OPTIONS

## 3D SECTION

	<b>Locking Mechanism</b> Locking Ball System + Safety Lock		<b>Flow Rate</b> Up to 189 l / min		<b>Material</b> Carbon Steel Stainless Steel Brass
	<b>Working Temperature</b> -20 °C / +90 °C		<b>Interchange</b> 16028		<b>Connection System</b> Push
	<b>Operating Pressure</b> Up to 250 Bar		<b>Available Threads</b> BSP - NPT - Metric - SAE		<b>Connection Under Pressure</b> Connection: Not Allowed Disconnection: Not Allowed
	<b>Body Sizes</b> ISO 10-25		<b>Sealing Description</b> NBR - FKM		<b>Valving Style</b> Flat Face

## MAIN APPLICATIONS



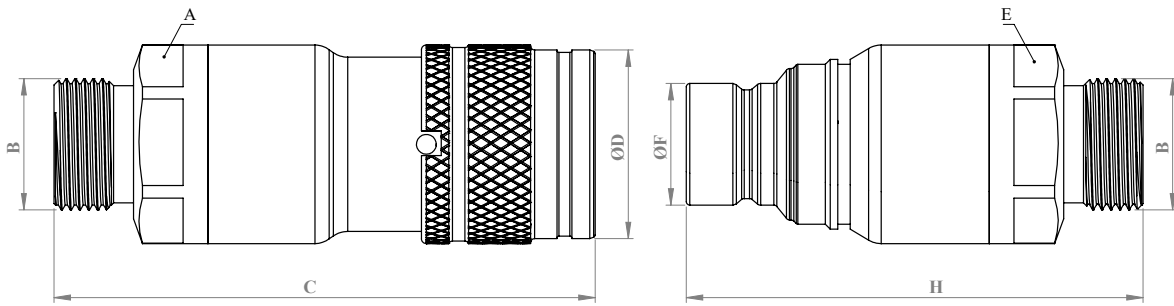
**WARNING**

- Connection or disconnection during flow and under dynamic pressure is not allowed.
- Connection or Disconnection is not allowed when the internal circuit temperature is higher than 80°C / 176°F
- Usage over the maximum working pressures is not allowed.
- Please ensure that the OLEOCON product series you have chosen is compatible with the temperature , material and pressure requirements of your system.
- Please contact with OLEOCON technical support for any further questions.

**INFORMATION**

- Flat face design prevents dirt or dust accumulation in the circuit.
- Environment friendly design which prevents fluid spillage during disconnection.
- Top quality sealing rings provides high level of protection.
- Linear flow prevents pressure drops and turbulences.
- Durable, safe, compact and simple to use design.
- Please ensure the cleanliness of all connection surfaces to avoid dirt or dust accumulation in the circuit.
- Please ensure the alignment and full connection of male and female parts.
- Safety lock feature prevents accidental disconnection.

## TECHNICAL DRAWING



BODY SIZE	DESCRIPTION	COUPLING GENDER	Hex		THREAD SIZE(B)	DIAMETER		LENGTH		WEIGHT				
			mm	inch		mm	inch	mm	inch	kg	lbs			
06	QCF-6A-8L	FEMALE	A	-	-	M14*1.5	D	-	-	C	-	-	-	
	QCF-6B-8L	MALE	E	-	-	M14*1.5	F	-	-	H	-	-	-	
	QCF-6A-8L	FEMALE	A	-	-	M16*1.5								
	QCF-6A-8L	MALE	E	-	-	M16*1.5								
10	QCF-10A-10L	FEMALE	A	30	1,18	M16*1.5	D	32	1,25	C	84	3,30	0,38	0,84
	QCF-10B-10L	MALE	E	30	1,18	M16*1.5	F	19,7	0,77	H	74	2,91	0,24	0,53
	QCF-10A-12L	FEMALE	A	30	1,18	M18*1.5	D	32	1,25	C	83	3,26	0,38	0,84
	QCF-10B-12L	MALE	E	30	1,18	M18*1.5	F	19,7	0,77	H	73	2,87	0,24	0,53
	QCF-10A-15L	FEMALE	A	30	1,18	M22*1.5	D	32	1,25	C	83	3,26	0,39	0,86
	QCF-10B-15L	MALE	E	30	1,18	M22*1.5	F	19,7	0,77	H	73	2,87	0,25	0,55
12.5	QCF-12A-12L	FEMALE	A	36	1,41	M18*1.5	D	38	1,49	C	99	3,89	0,63	1,39
	QCF-12B-12	MALE	E	36	1,41	M18*1.5	F	24,5	0,96	H	82	3,22	0,4	0,88
	QCF-12A-15L	FEMALE	A	36	1,41	M22*1.5	D	38	1,49	C	98	3,85	0,63	1,39
	QCF-12B-15L	MALE	E	36	1,41	M22*1.5	F	24,5	0,96	H	81	3,18	0,4	0,88
	QCF-12A-18L	FEMALE	A	36	1,41	M26*1.5	D	38	1,49	C	98	3,85	0,63	1,39
	QCF-12B-18L	MALE	E	36	1,41	M26*1.5	F	24,5	0,96	H	81	3,18	0,4	0,88
19	QCF-19A-18L	FEMALE	A	41	1,61	M26*1.5	D	46,1	1,81	C	116	4,56	0,98	2,16
	QCF-19B-18L	MALE	E	41	1,61	M26*1.5	F	29,9	1,17	H	97	3,81	0,6	1,32
	QCF-19A-22L	FEMALE	A	41	1,61	M30*2	D	46,1	1,81	C	115	4,52	0,97	2,13
	QCF-19B-22L	MALE	E	41	1,61	M30*2	F	29,9	1,17	H	96	3,77	0,59	1,30
25	QCF-25A-28L	FEMALE	A	50	1,96	M36*2	D	55	2,16	C	123	4,84	1,5	3,30
	QCF-25B-28L	MALE	E	50	1,96	M36*2	F	36	1,41	H	106	4,17	0,92	2,02

ISO 8434-1

BODY SIZE	WORKING PRESSURE						BURST PRESSURE					
	COUPLE		FEMALE		MALE		COUPLE		FEMALE		MALE	
	MP <sub>a</sub>	PSI	MP <sub>a</sub>	PSI	MP <sub>a</sub>	PSI	MP <sub>a</sub>	PSI	MP <sub>a</sub>	PSI	MP <sub>a</sub>	PSI
6	-	-	-	-	-	-	-	-	-	-	-	-
10	25	3625	25	3625	25	3625	100	14500	100	14500	100	14500
12.5	25	3625	25	3625	25	3625	100	14500	100	14500	100	14500
19	25	3625	25	3625	25	3625	100	14500	100	14500	100	14500
25	20	2900	20	2900	20	2900	80	11600	80	11600	80	11600