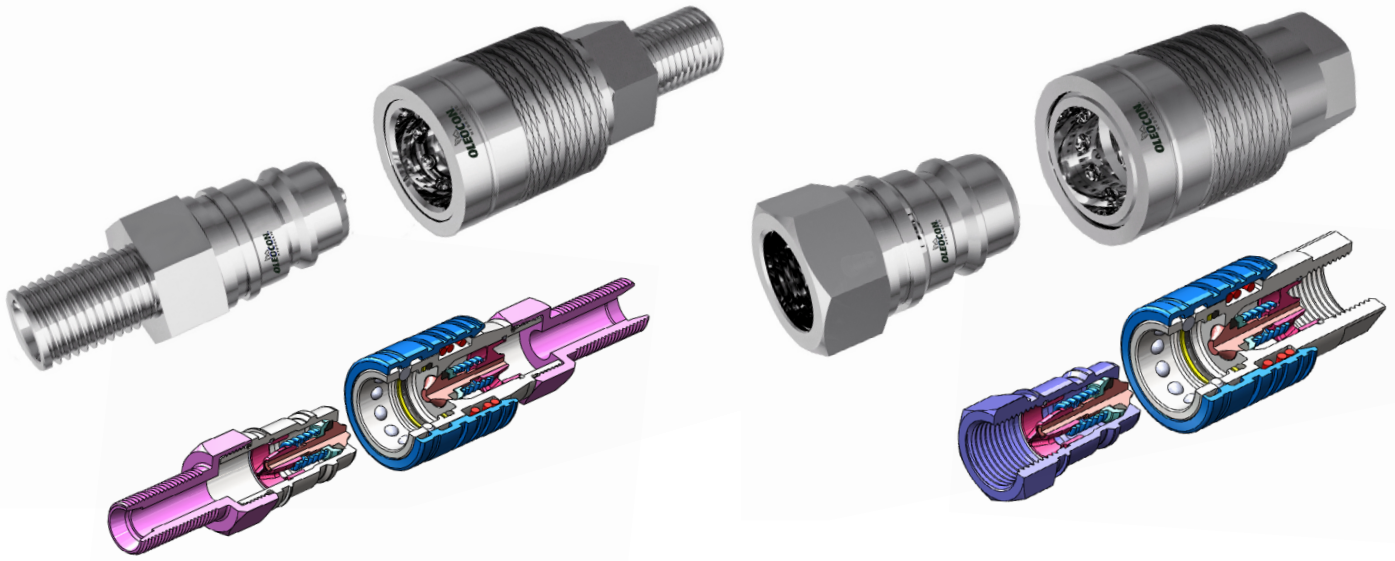


# PUSH PULL



3D SECTION

## TECHNICAL FEATURES AND OPTIONS

3D SECTION



**Locking Mechanism**  
Locking Ball System



**Flow Rate**  
Up to 45 l / min



**Material**  
Carbon Steel  
Stainless Steel  
Brass



**Working Temperature**  
-20 °C / +100 °C



**Interchange**  
ISO 7241-A



**Connection System**  
Single Action Sleeve



**Operating Pressure**  
Up to 315 Bar



**Available Threads**  
BSP - Metric



**Connection Under Pressure**  
Connection: not Allowed  
Disconnection: not Allowed



**Body Sizes**  
ISO 12.5



**Sealing Description**  
NBR - FKM



**Valving Style**  
Popet

## MAIN APPLICATIONS



OIL & GAS



AGRICULTURE



HYDRAULIC INDUSTRY



EARTH MOVING



HYDRAULIC EQUIPMENT



CONCRETE VEHICLES



VEHICLES



CHEMICAL INDUSTRY

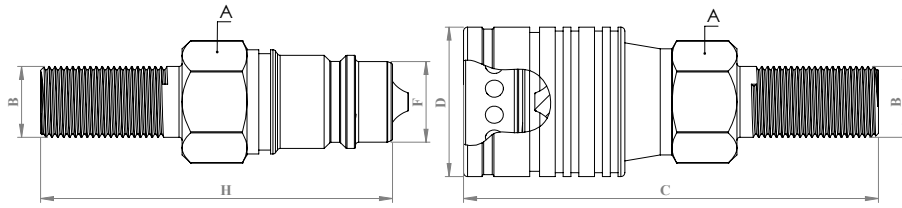
### WARNING

- Connection or disconnection during flow and under dynamic pressure is not allowed.
- Connection or Disconnection is not allowed when the internal circuit temperature is higher than 80°C / 176°F
- Usage over the maximum working pressures is not allowed.
- Please ensure that the OLEOCON product series you have chosen is compatible with the temperature , material and pressure requirements of your system.
- Please contact with OLEOCON technical support for any further questions.

### INFORMATION

- Do not connect or remove the counterparts under residual pressure.
- Top quality sealing rings provides high level of protection.
- The designs are developed to prevent pressure drops and turbulences.
- Durable and simple to use design.
- Please ensure the cleanliness of all connection surfaces to avoid dirt or dust accumulation in the circuit.
- Please ensure the alignment and full connection of male and female parts.

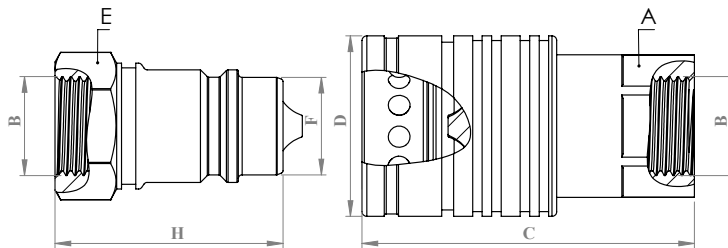
## TECHNICAL DRAWING



BODY SIZE	DESCRIPTION	COUPLING GENDER	THREAD TYPE	Hex		THREAD SIZE(B)	DIAMETER		LENGTH		WEIGHT				
				mm	inch		mm	inch	mm	inch	kg	lbs			
12,5	PPB-12A-12L	FEMALE	M	A	27	1,06	M18*1,5	D	38	1,49	C	105,5	4,01	0,32	0,70
	PPB-12B-12L	MALE	M	E	27	1,06	M18*1,5	F	20,48	0,8	H	89,5	3,52	0,14	0,30

ISO 8434-1

## TECHNICAL DRAWING



BODY SIZE	DESCRIPTION	COUPLING GENDER	THREAD TYPE	Hex		THREAD SIZE(B)	DIAMETER		LENGTH		WEIGHT				
				mm	inch		mm	inch	mm	inch	kg	lbs			
12,5	PP-12A-G12	FEMALE	BSP	A	27	1,06	1/2"	D	38	1,49	C	69	2,71	0,3	0,66
	QC-12B-G12	MALE	BSP	E	27	1,06	1/2"	F	20,48	0,8	H	53,5	2,10	0,09	0,19

ISO 1179-1