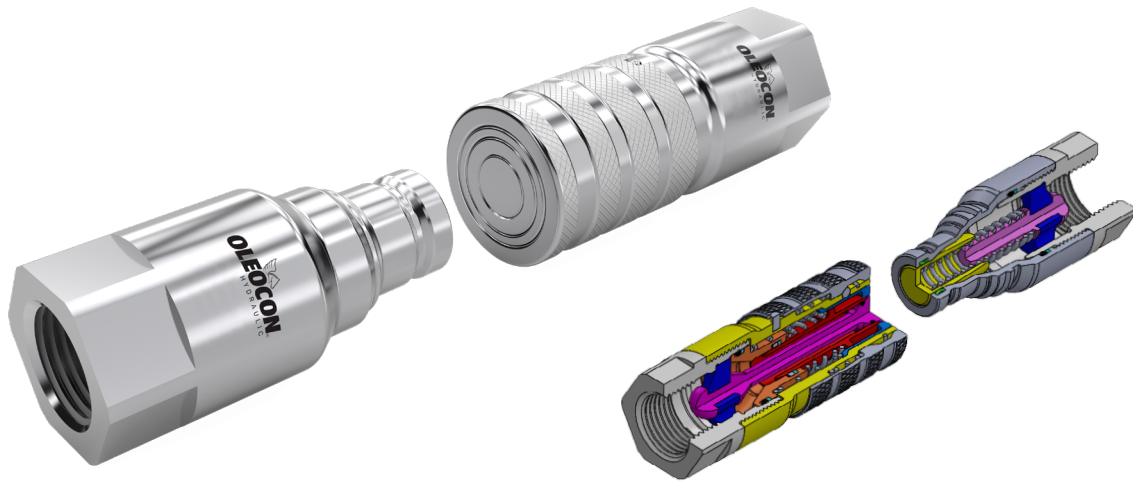


FLAT FACE - QCF SERIES

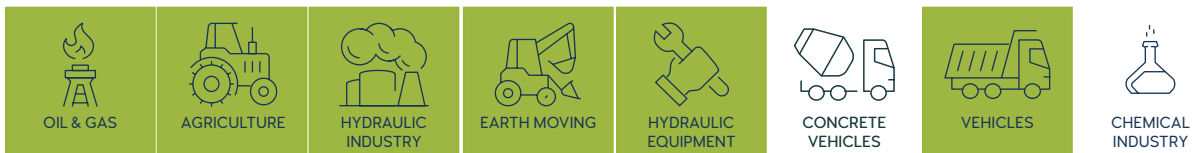


TECHNICAL FEATURES AND OPTIONS

3D SECTION

	Locking Mechanism Locking Ball System + Safety Lock		Flow Rate Up to 189 l / min		Material Carbon Steel Stainless Steel Brass
	Working Temperature -20 °C / +90 °C		Interchange 16028		Connection System Push
	Operating Pressure Up to 250 Bar		Available Threads BSP - NPT - Metric - SAE		Connection Under Pressure Connection: Not Allowed Disconnection: Not Allowed
	Body Sizes ISO 10-25		Sealing Description NBR - FKM		Valving Style Flat Face

MAIN APPLICATIONS



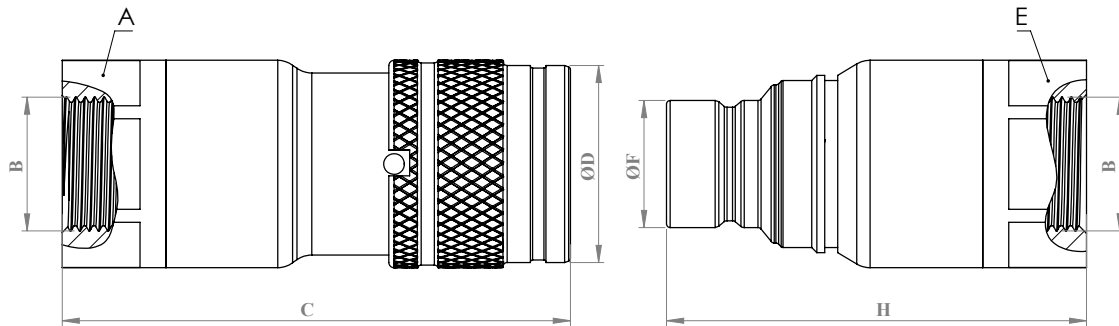
WARNING

- Connection or disconnection during flow and under dynamic pressure is not allowed.
- Connection or Disconnection is not allowed when the internal circuit temperature is higher than 80°C / 176°F
- Usage over the maximum working pressures is not allowed.
- Please ensure that the OLEOCON product series you have chosen is compatible with the temperature , material and pressure requirements of your system.
- Please contact with OLEOCON technical support for any further questions.

INFORMATION

- Flat face design prevents dirt or dust accumulation in the circuit.
- Environment friendly design which prevents fluid spillage during disconnection.
- Top quality sealing rings provides high level of protection.
- Linear flow prevents pressure drops and turbulences.
- Durable, safe, compact and simple to use design.
- Please ensure the cleanliness of all connection surfaces to avoid dirt or dust accumulation in the circuit.
- Please ensure the alignment and full connection of male and female parts.
- Safety lock feature prevents accidental disconnection.

TECHNICAL DRAWING



BODY SIZE	DESCRIPTION	COUPLING GENDER	Hex		THREAD SIZE(B)	DIAMETER			LENGTH		WEIGHT			
			mm	inch		mm	inch	mm	inch	kg	lbs			
06	QCF-6A-G14	FEMALE	A	-	-	1/4	D	-	-	C	-	-	-	
	QCF-6B-G14	MALE	E	-	-	1/4	F	-	-	H	-	-	-	
10	QCF-10A-G38	FEMALE	A	30	1,18	3/8	D	32	1,25	C	84	3,30	0,37	0,81
	QCF-10B-G38	MALE	E	30	1,18	3/8	F	19,7	0,77	H	74	2,91	0,24	0,52
	QCF-10A-G12	FEMALE	A	30	1,18	1/2	D	32	1,25	C	83	3,26	0,35	0,77
	QCF-10B-G12	MALE	E	30	1,18	1/2	F	19,7	0,77	H	73	2,87	0,22	0,48
12,5	QCF-12A-G12	FEMALE	A	36	1,41	1/2	D	38	1,49	C	99	3,89	0,63	1,38
	QCF-12B-G12	MALE	E	36	1,41	1/2	F	24,5	0,96	H	82	3,22	0,4	0,88
	QCF-12A-G34	FEMALE	A	36	1,41	3/4	D	38	1,49	C	98	3,85	0,59	1,27
	QCF-12B-G34	MALE	E	36	1,41	3/4	F	24,5	0,96	H	81	3,18	0,35	0,77
19	QCF-19A-G34	FEMALE	A	41	1,61	3/4	D	46,1	1,81	C	116	4,56	0,98	2,15
	QCF-19B-G34	MALE	E	41	1,61	3/4	F	29,9	1,17	H	97	3,81	0,58	1,27
	QCF-19A-G1	FEMALE	A	41	1,61	1	D	46,1	1,81	C	115	4,52	0,92	2,02
	QCF-19B-G1	MALE	E	41	1,61	1	F	29,9	1,17	H	96	3,77	0,52	1,14
25	QCF-25A-G1	FEMALE	A	50	1,96	1	D	55	2,16	C	123	4,84	1,48	3,25
	QCF-25B-G1	MALE	E	50	1,96	1	F	36	1,41	H	106	4,17	0,89	1,95
	QCF-25A-G114	FEMALE	A	55	2,16	1 1/4	D	55	2,16	C	121	4,76	1,37	3,01
	QCF-25B-G114	MALE	E	55	2,16	1 1/4	F	36	1,41	H	104	4,09	0,78	1,71

ISO 1179-1 BSPP

BODY SIZE	WORKING PRESSURE						BURST PRESSURE					
	COUPLE		FEMALE		MALE		COUPLE		FEMALE		MALE	
	MPa	PSI	MPa	PSI	MPa	PSI	MPa	PSI	MPa	PSI	MPa	PSI
6	-	-	-	-	-	-	-	-	-	-	-	-
10	25	3625	25	3625	25	3625	100	14500	100	14500	100	14500
12,5	25	3625	25	3625	25	3625	100	14500	100	14500	100	14500
19	25	3625	25	3625	25	3625	100	14500	100	14500	100	14500
25	20	2900	20	2900	20	2900	80	11600	80	11600	80	11600

BODY SIZE	RATED FLOW			FLUID LOSS PER DISCONNECT	CONNECTING FORCE		DISCONNECTING FORCE	
	PRES.DROP (kPa)	L/MIN	GPM		ml	N	lbf	N
6	-	-	-	-	-	-	-	-
10	100	23	5,06	0,035	170	38,2	40	8,98
12,5	100	45	9,91	0,07	190	42,69	50	11,23
19	100	100	22,02	0,15	220	49,43	70	15,73
25	100	189	41,62	0,25	250	56,17	80	17,97