

# POPET TYPE - QCA SERIES

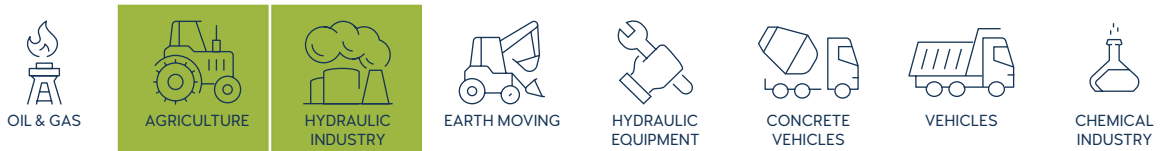


## TECHNICAL FEATURES AND OPTIONS

## 3D SECTION

	<b>Locking Mechanism</b> Screw to Connect		<b>Flow Rate</b> Up to 757 l / min		<b>Material</b> Carbon Steel Stainless Steel Brass
	<b>Working Temperature</b> -20 °C / +90 °C		<b>Interchange</b> ISO 7241-A		<b>Connection System</b> Single Action Sleeve
	<b>Operating Pressure</b> Up to 315 Bar		<b>Available Threads</b> BSP - NPT - Metric - SAE		<b>Connection Under Pressure</b> Connction: not Allowed Disconnection: not Allowed
	<b>Body Sizes</b> ISO 6.3 - 50		<b>Sealing Description</b> NBR - FKM		<b>Valving Style</b> Popet

## MAIN APPLICATIONS



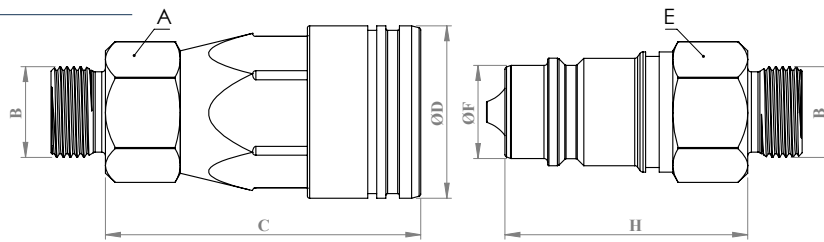
**WARNING**

- Connection or disconnection during flow and under dynamic pressure is not allowed.
- Connection or Disconnection is not allowed when the internal circuit temperature is higher than 80°C / 176°F
- Usage over the maximum working pressures is not allowed.
- Please ensure that the OLEOCON product series you have chosen is compatible with the temperature , material and pressure requirements of your system.
- Please contact with OLEOCON technical support for any further questions.

**INFORMATION**

- Do not connect or remove the counterparts under residual pressure.
- Top quality sealing rings provides high level of protection.
- The designs are developed to prevent pressure drops and turbulences.
- Durable and simple to use design.
- Please ensure the cleanliness of all connection surfaces to avoid dirt or dust accumulation in the circuit.
- Please ensure the alignment and full connection of male and female parts.

## TECHNICAL DRAWING

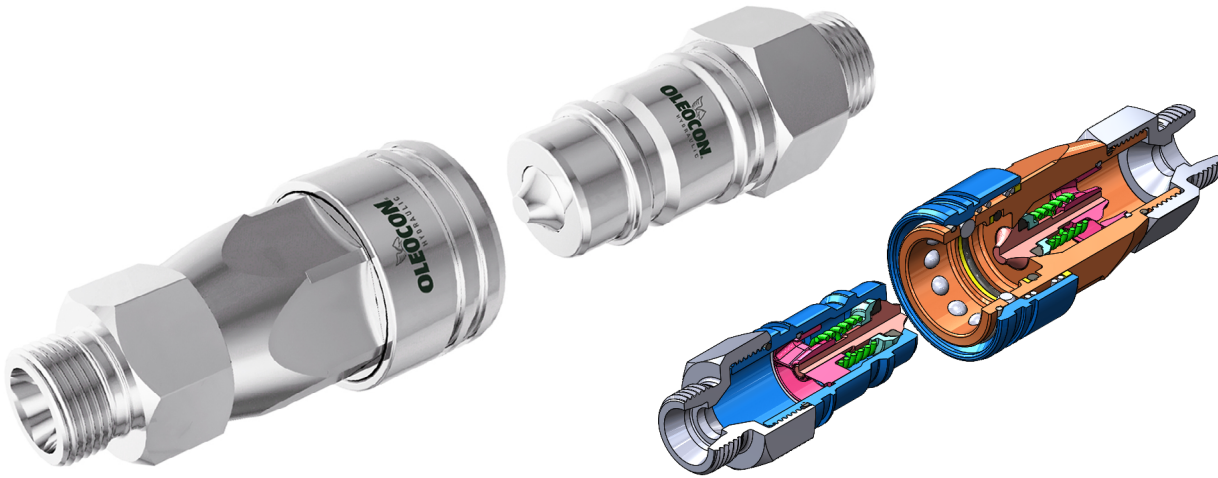


BODY SIZE	DESCRIPTION	COUPLING GENDER	Hex		THREAD SIZE(B)	DIAMETER		LENGTH		WEIGHT				
			mm	inch		mm	inch	mm	inch	kg	lbs			
6.3	QCA-6A-M6L	FEMALE	A	-	-	M12*1.5	D	-	-	C	-	-	-	
	QCA-6B-M6L	MALE	E	-	-	M12*1.5	F	-	-	H	-	-	-	
10	QCA-10A-M8L	FEMALE	A	24	0.94	M14*1.5	D	32	1.25	C	58	2.28	0.19	0.418
	QCA-10B-M8L	MALE	E	22	0.86	M14*1.5	F	17.23	0.67	H	40	1.57	0.09	0.198
	QCA-10A-M10L	FEMALE	A	24	0.94	M16*1.5	D	32	1.25	C	58	2.28	0.19	0.418
	QCA-10B-M10L	MALE	E	22	0.86	M16*1.5	F	17.23	0.67	H	40	1.57	0.09	0.198
	QCA-10A-M12L	FEMALE	A	24	0.94	M18*1.5	D	32	1.25	C	58	2.28	0.19	0.418
	QCA-10B-M12L	MALE	E	22	0.86	M18*1.5	F	17.23	0.67	H	40	1.57	0.09	0.198
12.5	QCA-12A-M12L	FEMALE	A	30	1.18	M18*1.5	D	38	1.49	C	69	2.71	0.29	0.638
	QCA-12B-M12L	MALE	E	27	1.06	M18*1.5	F	20.48	0.80	H	47	1.85	0.12	0.264
	QCA-12A-M15L	FEMALE	A	30	1.18	M22*1.5	D	38	1.49	C	69	2.71	0.29	0.638
	QCA-12B-M15L	MALE	E	27	1.06	M22*1.5	F	20.48	0.80	H	47	1.85	0.13	0.286
	QCA-12A-M18L	FEMALE	A	30	1.18	M26*1.5	D	38	1.49	C	69	2.71	0.3	0.66
	QCA-12B-M18L	MALE	E	27	1.06	M26*1.5	F	20.48	0.80	H	47	1.85	0.13	0.286
20	QCA-20A-M15L	FEMALE	A	38	1.49	M22*1.5	D	46.1	1.81	C	83	3.26	0.57	1.254
	QCA-20B-M15L	MALE	E	36	1.41	M22*1.5	F	29	1.14	H	56	2.20	0.26	0.572
	QCA-20A-M18L	FEMALE	A	38	1.49	M26*1.5	D	46.1	1.81	C	83	3.26	0.58	1.276
	QCA-20B-M18L	MALE	E	36	1.41	M26*1.5	F	29	1.14	H	56	2.20	0.27	0.594
	QCA-20A-M22L	FEMALE	A	38	1.49	M30*2	D	46.1	1.81	C	83	3.26	0.59	1.298
	QCA-20B-M22L	MALE	E	36	1.41	M30*2	F	29	1.14	H	56	2.20	0.27	0.594
25	QCA-25A-M18L	FEMALE	A	46	1.81	M26*1.5	D	54	2.12	C	99.2	3.90	0.68	1.496
	QCA-25B-M18L	MALE	E	41	1.61	M26*1.5	F	34.21	1.34	H	66	2.59	0.32	0.704
	QCA-25A-M22L	FEMALE	A	46	1.81	M30*2	D	54	2.12	C	99.2	3.90	0.69	1.518
	QCA-25B-M22L	MALE	E	41	1.61	M30*2	F	34.21	1.34	H	66	2.59	0.32	0.704
	QCA-25A-M28L	FEMALE	A	46	1.81	M36*2	D	54	2.12	C	99.2	3.90	0.69	1.518
	QCA-25B-M28L	MALE	E	41	1.61	M36*2	F	34.21	1.34	H	66	2.59	0.33	0.726

ISO-8434-1

BODY SIZE	WORKING PRESSURE						BURST PRESSURE					
	COUPLE		FEMALE		MALE		COUPLE		FEMALE		MALE	
	MPa	PSI	MPa	PSI	MPa	PSI	MPa	PSI	MPa	PSI	MPa	PSI
6	-	-	-	-	-	-	-	-	-	-	-	-
10	31.5	4567	31.5	4567	31.5	4567	126	18270	126	18270	126	18270
12.5	25	3625	25	3625	25	3625	100	14500	100	14500	100	14500
19	25	3625	25	3625	25	3625	100	14500	100	14500	100	14500
25	20	2900	20	2900	20	2900	80	11600	80	11600	80	11600
31.5	20	2900	20	2900	20	2900	80	11600	80	11600	80	11600
40	16	2320	16	2320	16	2320	64	9280	64	9280	64	9280
50	10	1450	10	1450	10	1450	40	5800	40	5800	40	5800

# POPET TYPE - QCA SERIES



## TECHNICAL FEATURES AND OPTIONS

## 3D SECTION

	<b>Locking Mechanism</b> Screw to Connect		<b>Flow Rate</b> Up to 757 l / min		<b>Material</b> Carbon Steel Stainless Steel Brass
	<b>Working Temperature</b> -20 °C / +90 °C		<b>Interchange</b> ISO 7241-A		<b>Connection System</b> Single Action Sleeve
	<b>Operating Pressure</b> Up to 315 Bar		<b>Available Threads</b> BSP - NPT - Metric - SAE		<b>Connection Under Pressure</b> Connction: not Allowed Disconnection: not Allowed
	<b>Body Sizes</b> ISO 6.3 - 50		<b>Sealing Description</b> NBR - FKM		<b>Valving Style</b> Popet

## MAIN APPLICATIONS



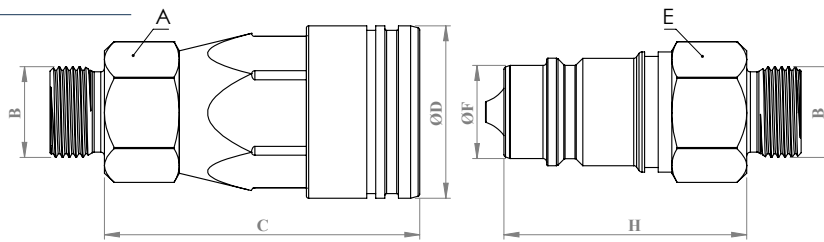
**WARNING**

- Connection or disconnection during flow and under dynamic pressure is not allowed.
- Connection or Disconnection is not allowed when the internal circuit temperature is higher than 80°C / 176°F
- Usage over the maximum working pressures is not allowed.
- Please ensure that the OLEOCON product series you have chosen is compatible with the temperature , material and pressure requirements of your system.
- Please contact with OLEOCON technical support for any further questions.

**INFORMATION**

- Do not connect or remove the counterparts under residual pressure.
- Top quality sealing rings provides high level of protection.
- The designs are developed to prevent pressure drops and turbulences.
- Durable and simple to use design.
- Please ensure the cleanliness of all connection surfaces to avoid dirt or dust accumulation in the circuit.
- Please ensure the alignment and full connection of male and female parts.

## TECHNICAL DRAWING



BODY SIZE	DESCRIPTION	COUPLING GENDER	Hex		THREAD SIZE (B)	DIAMETER			LENGTH		WEIGHT			
				mm		inch		mm	inch	mm	inch	kg	lbs	
25	QCA-25A-M18L	FEMALE	A	46	1.81	M26*1.5	D	54	2.12	C	99.2	3.90	0.68	1.496
	QCA-25B-M18L	MALE	E	41	1.61	M26*1.5	F	34.21	1.34	H	66	2.59	0.32	0.704
	QCA-25A-M22L	FEMALE	A	46	1.81	M30*2	D	54	2.12	C	99.2	3.90	0.69	1.518
	QCA-25B-M22L	MALE	E	41	1.61	M30*2	F	34.21	1.34	H	66	2.59	0.32	0.704
	QCA-25A-M28L	FEMALE	A	46	1.81	M36*2	D	54	2.12	C	99.2	3.90	0.69	1.518
	QCA-25B-M28L	MALE	E	41	1.61	M36*2	F	34.21	1.34	H	66	2.59	0.33	0.726
31.5	QCA-31A-M22L	FEMALE	A	55	2.16	M30*2	D	68	2.67	C	117.2	4.61	1.31	2.882
	QCA-31B-M22L	MALE	E	50	1.96	M30*2	F	44.9	44.9	H	75	2.95	0.51	1.122
	QCA-31A-M28L	FEMALE	A	55	2.16	M36*2	D	68	2.67	C	117.2	4.61	1.31	2.882
	QCA-31B-M28L	MALE	E	50	1.96	M36*2	F	44.9	44.9	H	75	2.95	0.51	1.122
	QCA-31A-M35L	FEMALE	A	55	2.16	M45*2	D	68	2.67	C	117.2	4.61	1.31	2.882
	QCA-31B-M35L	MALE	E	50	1.96	M45*2	F	44.9	44.9	H	75	2.95	0.51	1.122
40	QCA-40A-M35L	FEMALE	A	70	2.75	M45*2	D	83	3.26	C	134.2	5.28	2.66	5.852
	QCA-40B-M35L	MALE	E	60	2.36	M45*2	F	54.93	2.16	H	84	3.30	0.96	2.112
	QCA-40A-M42L	FEMALE	A	70	2.75	M52*2	D	83	3.26	C	134.2	5.28	2.66	5.852
	QCA-40B-M42L	MALE	E	60	2.36	M52*2	F	54.93	2.16	H	84	3.30	0.96	2.112
50	QCA-50A-M35L	FEMALE	A	80	3.14	M45*2	D	99	3.89	C	160.2	6.30	3.89	8.558
	QCA-50B-M35L	MALE	E	75	2.95	M45*2	F	65	2.55	H	97	3.81	1.48	3.256
	QCA-50A-M35L	FEMALE	A	80	3.14	M52*2	D	99	3.89	C	160.2	6.30	3.89	8.558
	QCA-50B-M35L	MALE	E	75	2.95	M52*2	F	65	2.55	H	97	3.81	1.48	3.256

ISO-8434-1

BODY SIZE	WORKING PRESSURE						BURST PRESSURE					
	COUPLE		FEMALE		MALE		COUPLE		FEMALE		MALE	
	MPa	PSI	MPa	PSI	MPa	PSI	MPa	PSI	MPa	PSI	MPa	PSI
6	-	-	-	-	-	-	-	-	-	-	-	-
10	31.5	4567	31.5	4567	31.5	4567	126	18270	126	18270	126	18270
12.5	25	3625	25	3625	25	3625	100	14500	100	14500	100	14500
19	25	3625	25	3625	25	3625	100	14500	100	14500	100	14500
25	20	2900	20	2900	20	2900	80	11600	80	11600	80	11600
31.5	20	2900	20	2900	20	2900	80	11600	80	11600	80	11600
40	16	2320	16	2320	16	2320	64	9280	64	9280	64	9280
50	10	1450	10	1450	10	1450	40	5800	40	5800	40	5800

# POPET TYPE - QCA SERIES

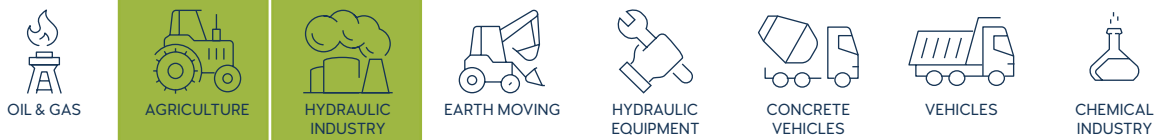


## TECHNICAL FEATURES AND OPTIONS

## 3D SECTION

	<b>Locking Mechanism</b> Screw to Connect		<b>Flow Rate</b> Up to 757 l / min		<b>Material</b> Carbon Steel Stainless Steel Brass
	<b>Working Temperature</b> -20 °C / +90 °C		<b>Interchange</b> ISO 7241-A		<b>Connection System</b> Single Action Sleeve
	<b>Operating Pressure</b> Up to 315 Bar		<b>Available Threads</b> BSP - NPT - Metric - SAE		<b>Connection Under Pressure</b> Connection: not Allowed Disconnection: not Allowed
	<b>Body Sizes</b> ISO 6.3 - 50		<b>Sealing Description</b> NBR - FKM		<b>Valving Style</b> Popet

## MAIN APPLICATIONS



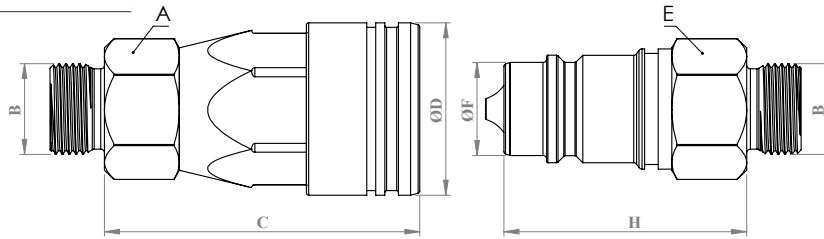
**WARNING**

- Connection or disconnection during flow and under dynamic pressure is not allowed.
- Connection or Disconnection is not allowed when the internal circuit temperature is higher than 80°C / 176°F
- Usage over the maximum working pressures is not allowed.
- Please ensure that the OLEOCON product series you have chosen is compatible with the temperature , material and pressure requirements of your system.
- Please contact with OLEOCON technical support for any further questions.

**INFORMATION**

- Do not connect or remove the counterparts under residual pressure.
- Top quality sealing rings provides high level of protection.
- The designs are developed to prevent pressure drops and turbulences.
- Durable and simple to use design.
- Please ensure the cleanliness of all connection surfaces to avoid dirt or dust accumulation in the circuit.
- Please ensure the alignment and full connection of male and female parts.

## TECHNICAL DRAWING



BODY SIZE	DESCRIPTION	COUPLING GENDER	Hex		THREAD SIZE(B)	DIAMETER			LENGTH		WEIGHT			
			mm	inch		mm	inch	mm	inch	kg	lbs			
6.3	QCA-6A-M6S	FEMALE	A	-	-	M14*1.5	D	-	-	C	-	-	-	-
	QCA-6B-M6S	MALE	E	-	-	M14*1.5	F	-	-	H	-	-	-	-
10	QCA-10A-M8S	FEMALE	A	24	0.94	M16*1.5	D	32	1.25	C	58	2.28	0.2	0.44
	QCA-10B-M8S	MALE	E	22	0.86	M16*1.5	F	17.23	0.67	H	40	1.57	0.09	0.198
	QCA-10A-M10S	FEMALE	A	24	0.94	M18*1.5	D	32	1.25	C	58	2.28	0.2	0.44
	QCA-10B-M10S	MALE	E	22	0.86	M18*1.5	F	17.23	0.67	H	40	1.57	0.09	0.198
	QCA-10A-M12S	FEMALE	A	24	0.94	M20*1.5	D	32	1.25	C	58	2.28	0.21	0.462
	QCA-10B-M12S	MALE	E	22	0.86	M20*1.5	F	17.23	0.67	H	40	1.57	0.1	0.22
12.5	QCA-12A-M10S	FEMALE	A	30	1.18	M18*1.5	D	38	1.49	C	69	2.71	0.29	0.638
	QCA-12B-M10S	MALE	E	27	1.06	M18*1.5	F	20.48	0.80	H	47	1.85	0.13	0.286
	QCA-12A-M12S	FEMALE	A	30	1.18	M20*1.5	D	38	1.49	C	69	2.71	0.3	0.66
	QCA-12B-M12S	MALE	E	27	1.06	M20*1.5	F	20.48	0.80	H	47	1.85	0.13	0.286
	QCA-12A-M16S	FEMALE	A	30	1.18	M24*1.5	D	38	1.49	C	69	2.71	0.31	0.682
	QCA-12B-M16S	MALE	E	27	1.06	M24*1.5	F	20.48	0.80	H	47	1.85	0.14	0.308
20	QCA-20A-M12S	FEMALE	A	38	1.49	M20*1.5	D	46.1	1.81	C	83	3.26	0.57	1.254
	QCA-20B-M12S	MALE	E	36	1.41	M20*1.5	F	29	1.14	H	56	2.20	0.27	0.594
	QCA-20A-M16S	FEMALE	A	38	1.49	M24*1.5	D	46.1	1.81	C	83	3.26	0.58	1.276
	QCA-20B-M16S	MALE	E	36	1.41	M24*1.5	F	29	1.14	H	56	2.20	0.27	0.594
	QCA-20A-M20S	FEMALE	A	38	1.49	M30*2	D	46.1	1.81	C	83	3.26	0.59	1.298
	QCA-20B-M20S	MALE	E	36	1.41	M30*2	F	29	1.14	H	56	2.20	0.28	0.616

ISO-8434-1

BODY SIZE	WORKING PRESSURE						BURST PRESSURE					
	COUPLE		FEMALE		MALE		COUPLE		FEMALE		MALE	
	MPa	PSI	MPa	PSI	MPa	PSI	MPa	PSI	MPa	PSI	MPa	PSI
6	-	-	-	-	-	-	-	-	-	-	-	-
10	31.5	4567	31.5	4567	31.5	4567	126	18270	126	18270	126	18270
12.5	25	3625	25	3625	25	3625	100	14500	100	14500	100	14500
19	25	3625	25	3625	25	3625	100	14500	100	14500	100	14500
25	20	2900	20	2900	20	2900	80	11600	80	11600	80	11600
31.5	20	2900	20	2900	20	2900	80	11600	80	11600	80	11600
40	16	2320	16	2320	16	2320	64	9280	64	9280	64	9280
50	10	1450	10	1450	10	1450	40	5800	40	5800	40	5800

# POPET TYPE - QCA SERIES



## TECHNICAL FEATURES AND OPTIONS

## 3D SECTION

	Locking Mechanism Screw to Connect		Flow Rate Up to 757 l / min		Material Carbon Steel Stainless Steel Brass
	Working Temperature -20 °C / +90 °C		Interchange ISO 7241-A		Connection System Single Action Sleeve
	Operating Pressure Up to 315 Bar		Available Threads BSP - NPT - Metric - SAE		Connection Under Pressure Connection: not Allowed Disconnection: not Allowed
	Body Sizes ISO 6.3 - 50		Sealing Description NBR - FKM		Valving Style Popet

## MAIN APPLICATIONS



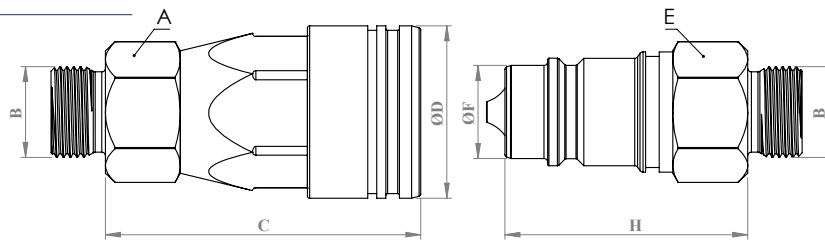
### WARNING

- Connection or disconnection during flow and under dynamic pressure is not allowed.
- Connection or Disconnection is not allowed when the internal circuit temperature is higher than 80°C / 176°F
- Usage over the maximum working pressures is not allowed.
- Please ensure that the OLEOCON product series you have chosen is compatible with the temperature , material and pressure requirements of your system.
- Please contact with OLEOCON technical support for any further questions.

### INFORMATION

- Do not connect or remove the counterparts under residual pressure.
- Top quality sealing rings provides high level of protection.
- The designs are developed to prevent pressure drops and turbulences.
- Durable and simple to use design.
- Please ensure the cleanliness of all connection surfaces to avoid dirt or dust accumulation in the circuit.
- Please ensure the alignment and full connection of male and female parts.

## TECHNICAL DRAWING



BODY SIZE	DESCRIPTION	COUPLING GENDER	Hex		THREAD SIZE (B)	DIAMETER			LENGTH		WEIGHT			
			mm	inch		mm	inch	mm	inch	kg	lbs			
25	QCA-25A-M16S	FEMALE	A	46	1,81	M24*1,5	D	54	2,12	C	99,2	3,90	0,68	1,496
	QCA-25B-M16S	MALE	E	41	1,61	M24*1,5	F	34,21	1,34	H	66	2,59	0,33	0,726
	QCA-25A-M20S	FEMALE	A	46	1,81	M30*2	D	54	2,12	C	99,2	3,90	0,7	1,54
	QCA-25B-M20S	MALE	E	41	1,61	M30*2	F	34,21	1,34	H	66	2,59	0,34	0,748
	QCA-25A-M25S	FEMALE	A	46	1,81	M36*2	D	54	2,12	C	99,2	3,90	0,71	1,562
	QCA-25B-M25S	MALE	E	41	1,61	M36*2	F	34,21	1,34	H	66	2,59	0,36	0,792
31,5	QCA-31A-M20S	FEMALE	A	55	2,16	M30*2	D	68	2,67	C	117,2	4,61	1,32	2,904
	QCA-31B-M20S	MALE	E	50	1,96	M30*2	F	44,9	44,9	H	75	2,95	0,52	1,144
	QCA-31A-M25S	FEMALE	A	55	2,16	M36*2	D	68	2,67	C	117,2	4,61	1,33	2,926
	QCA-31B-M25S	MALE	E	50	1,96	M36*2	F	44,9	44,9	H	75	2,95	0,52	1,144
	QCA-31A-M30S	FEMALE	A	55	2,16	M42*2	D	68	2,67	C	117,2	4,61	1,34	2,948
	QCA-31B-M30S	MALE	E	50	1,96	M42*2	F	44,9	44,9	H	75	2,95	0,52	1,144
40	QCA-40A-M30S	FEMALE	A	70	2,75	M42*2	D	83	3,26	C	134,2	5,28	2,65	5,83
	QCA-40B-M30S	MALE	E	60	2,36	M42*2	F	54,93	2,16	H	84	3,30	0,97	2,134
	QCA-40A-M38S	FEMALE	A	70	2,75	M52*2	D	83	3,26	C	134,2	5,28	2,66	5,852
	QCA-40B-M38S	MALE	E	60	2,36	M52*2	F	54,93	2,16	H	84	3,30	0,97	2,134
50	QCA-50A-M30S	FEMALE	A	80	3,14	M42*2	D	99	3,89	C	160,2	6,30	3,9	8,58
	QCA-50B-M30S	MALE	E	75	2,95	M42*2	F	65	2,55	H	97	3,81	1,49	3,278
	QCA-50A-M38S	FEMALE	A	80	3,14	M52*2	D	99	3,89	C	160,2	6,30	3,91	8,602
	QCA-50B-M38S	MALE	E	75	2,95	M52*2	F	65	2,55	H	97	3,81	1,5	3,3

ISO-8434-1

BODY SIZE	WORKING PRESSURE						BURST PRESSURE					
	COUPLE		FEMALE		MALE		COUPLE		FEMALE		MALE	
	MPa	PSI	MPa	PSI	MPa	PSI	MPa	PSI	MPa	PSI	MPa	PSI
6	-	-	-	-	-	-	-	-	-	-	-	-
10	31,5	4567	31,5	4567	31,5	4567	126	18270	126	18270	126	18270
12,5	25	3625	25	3625	25	3625	100	14500	100	14500	100	14500
19	25	3625	25	3625	25	3625	100	14500	100	14500	100	14500
25	20	2900	20	2900	20	2900	80	11600	80	11600	80	11600
31,5	20	2900	20	2900	20	2900	80	11600	80	11600	80	11600
40	16	2320	16	2320	16	2320	64	9280	64	9280	64	9280
50	10	1450	10	1450	10	1450	40	5800	40	5800	40	5800