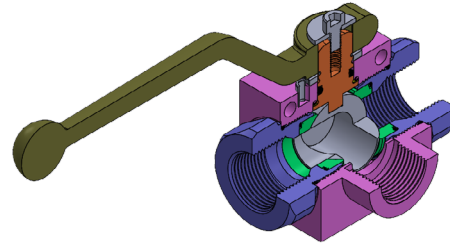
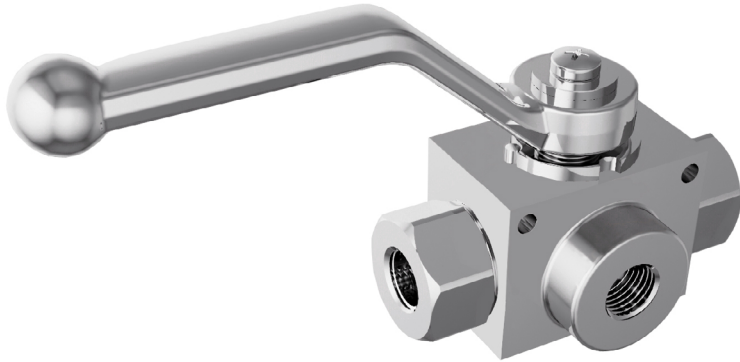


# BALL VALVES - KV3L SERIES



## TECHNICAL FEATURES AND OPTIONS

## 3D SECTION



**Working Temperature**  
-20 °C / +80 °C



**Material**  
High Strength  
Carbon Steel  
Stainless Steel



**Operating Pressure**  
Up to 500 Bar



**Available Threads**  
BSP - NPT - SAE - Metric











**Body Sizes**  
DN10-25



**Sealing Description**  
NBR - FKM - PTFE - EPDM

## MAIN APPLICATIONS

 OIL & GAS	 AGRICULTURE	 HYDRAULIC INDUSTRY	 EARTH MOVING	 HYDRAULIC EQUIPMENT	 CONCRETE VEHICLES	 VEHICLES	 CHEMICAL INDUSTRY
--	--	---	---	--	---	---	--

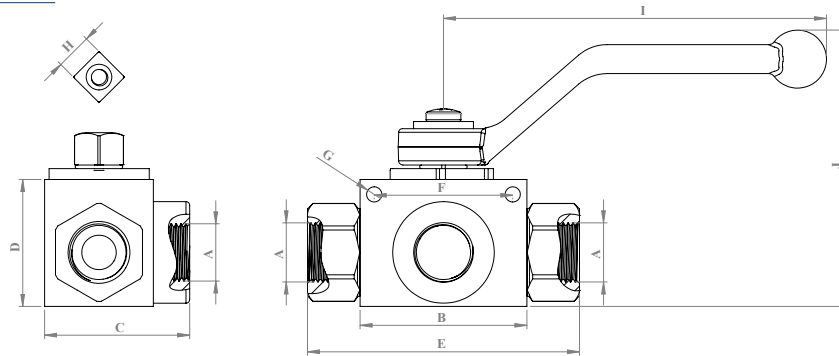
**WARNING**

- Please ensure that the flow speeds don't go beyond the usual values.
- Please be void of abnormal operating conditions. (For e.g., oscillations, impulse pressures, water hammering, cavitation, and proportions of solid materials and abrasives.)
- Please do not touch the valves at working temperatures lower than -20°C or higher than +50°C
- Please ensure the cleanliness of all connection surfaces to avoid dirt or dust accumulation in the circuit.
- Please ensure the alignment and full connection of the assembly parts.
- Please do not use over the maximum working pressures.
- Please ensure that the OLEOCON product series you have chosen is compatible with the temperature, material, and pressure requirements of your system.
- Please contact with OLEOCON technical support for any further questions.

**INFORMATION**

- KV3 Series hydraulic 3-Way ball valves are used to either shut-off or open of flow passage and their easy operation provides unrestricted flow.
- Due to their volumetric structure they work rapidly and efficiently and prevent cavitation.
- KV3 Series ball valves can be locked in the open or closed position through locking washer on the circle pin.
- Internal ball is hard chrome coated steel and delrin (POM) seated.

## TECHNICAL DRAWING



SIZE DN	DESCRIPTION	A	B		C		D		E		F		G		H		I		J		WEIGHT	
			mm	inch	mm	inch	mm	inch	mm	inch	mm	inch	mm	inch	mm	inch	mm	inch	mm	inch	kg	inch
10	KV3L-10G14	1/4	46	1.81	40	1.18	35	1.37	75	2.95	38	1.49	4.2	0.16	10	0.39	108	5.74	76	2.99	0.48	1.06
	KV3L-10G38	3/8	46	1.81	40	1.18	35	1.37	75	2.95	38	1.49	4.2	0.16	10	0.39	108	5.74	76	2.99	0.45	0.99
12.5	KV3L-12G12	1/2	51	2	50	1.37	40	1.57	82.5	3.24	41.5	1.63	5	0.19	10	0.39	108	7.48	82	3.22	0.66	1.46
20	KV3L-20G34	3/4	61	2.4	60	1.77	55	2.16	92	3.62	50	1.96	6.5	0.25	14	0.55	175	8.7	110	4.33	1.31	2.90
25	KV3L-25G1	1	71	2.79	76	2.16	60	2.36	116	4.56	58	2.28	6.5	0.25	14	0.55	175	9.17	114	4.48	1.87	4.15
	KV3L-25G114	1 1/4	71	2.79	90	2.16	60	2.36	130	5.11	58	2.28	6.5	0.25	14	0.55	175	9.44	114	4.48	2.80	6.21
	KV3L-25G112	1 1/2	71	2.79	90	2.16	60	2.36	136	5.35	58	2.28	6.5	0.25	14	0.55	175	9.56	114	4.48	2.90	6.43

ISO 1179-1 BSPP

SIZE DN	DESCRIPTION	A	B		C		D		E		F		G		H		I		J		WEIGHT	
			mm	inch	mm	inch	mm	inch	mm	inch	mm	inch	mm	inch	mm	inch	mm	inch	mm	inch	kg	inch
10	KV3L-10NPT14	1/4	46	1.81	40	1.18	35	1.37	75	2.95	38	1.49	4.2	0.16	10	0.39	108	5.74	76	2.99	0.48	1.06
	KV3L-10NPT38	3/8	46	1.81	40	1.18	35	1.37	75	2.95	38	1.49	4.2	0.16	10	0.39	108	5.74	76	2.99	0.45	0.99
12.5	KV3L-12NPT12	1/2	51	2	50	1.37	40	1.57	82.5	3.24	41.5	1.63	5	0.19	10	0.39	108	7.48	82	3.22	0.66	1.46
20	KV3L-20NPT34	3/4	61	2.4	60	1.77	55	2.16	92	3.62	50	1.96	6.5	0.25	14	0.55	175	8.7	110	4.33	1.31	2.90
25	KV3L-25NPT1	1	71	2.79	76	2.16	60	2.36	116	4.56	58	2.28	6.5	0.25	14	0.55	175	9.17	114	4.48	1.87	4.15
	KV3L-25NPT114	1 1/4	71	2.79	90	2.16	60	2.36	130	5.11	58	2.28	6.5	0.25	14	0.55	175	9.44	114	4.48	2.80	6.21
	KV3L-25NPT112	1 1/2	71	2.79	90	2.16	60	2.36	136	5.35	58	2.28	6.5	0.25	14	0.55	175	9.56	114	4.48	2.90	6.43

ASME B1.20.1 NPT

SIZE DN	DESCRIPTION	A	B		C		D		E		F		G		H		I		J		WEIGHT	
			mm	inch	mm	inch	mm	inch	mm	inch	mm	inch	mm	inch	mm	inch	mm	inch	mm	inch	kg	inch
10	KV3L-10SAE4	7/16 UNF	46	1.81	40	1.18	35	1.37	75	2.95	38	1.49	4.2	0.16	10	0.39	108	5.74	76	2.99	0.48	1.06
	KV3L-10SAE6	9/16 UNF	46	1.81	40	1.18	35	1.37	75	2.95	38	1.49	4.2	0.16	10	0.39	108	5.74	76	2.99	0.45	0.99
12.5	KV3L-12SAE8	3/4 UNF	51	2	50	1.37	40	1.57	82.5	3.24	41.5	1.63	5	0.19	10	0.39	108	7.48	82	3.22	0.66	1.46
20	KV3L-20SAE12	1 1/16 UN	61	2.4	60	1.77	55	2.16	92	3.62	50	1.96	6.5	0.25	14	0.55	175	8.7	110	4.33	1.31	2.90
25	KV3L-25SAE16	15/16 UN	71	2.79	76	2.16	60	2.36	116	4.56	58	2.28	6.5	0.25	14	0.55	175	9.17	114	4.48	1.87	4.15
	KV3L-25SAE20	15/8 UN	71	2.79	90	2.16	60	2.36	130	5.11	58	2.28	6.5	0.25	14	0.55	175	9.44	114	4.48	2.80	6.21
	KV3L-25SAE24	1 7/8 UN	71	2.79	90	2.16	60	2.36	136	5.35	58	2.28	6.5	0.25	14	0.55	175	9.56	114	4.48	2.90	6.43

ISO 11926-1

WORKING PRESSURE													
10(6)		10		12		20		25		25 (31.5)		25 (40)	
MPa	Psi	MPa	Psi	MPa	Psi	MPa	Psi	MPa	Psi	MPa	Psi	MPa	Psi
50	7250	50	7250	50	7250	40	5800	40	5800	35	5075	35	5075