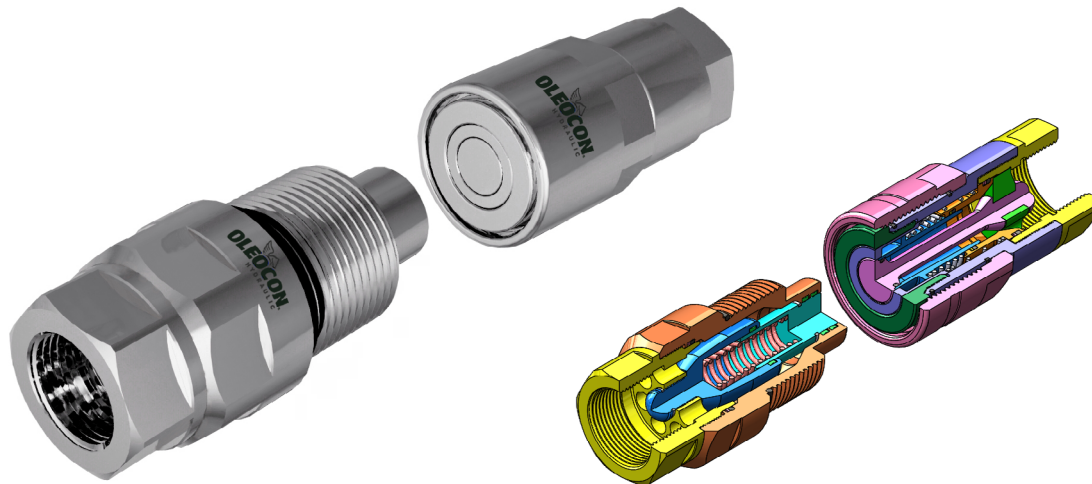


# FLAT FACE SCREW - APA SERIES



## TECHNICAL FEATURES AND OPTIONS

## 3D SECTION



Locking Mechanism  
Screw to Connect



Flow Rate  
Up to 189 l / min



Material  
Carbon Steel  
Stainless Steel



Working Temperature  
-20 °C / +90 °C



Interchange  
Oleocon



Connection System  
Screw



Operating Pressure  
Up to 350 Bar



Available Threads  
BSP



Connection Under Pressure  
Connetion: Both Side  
Disconnection: Allowed



Available Sizes  
From 1" to 1-1/4"



Sealing Description  
NBR - FKM



Valving Style  
Flat Face

## MAIN APPLICATIONS



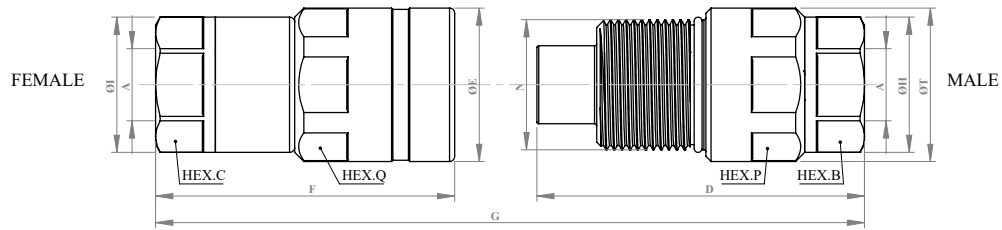
### WARNING

- Connection or disconnection during flow and under dynamic pressure is not allowed.
- Connection or Disconnection is not allowed when the internal circuit temperature is higher than 80°C / 176°F
- Usage over the maximum working pressures is not allowed.
- Please ensure that the OLEOCON product series you have chosen is compatible with the temperature , material and pressure requirements of your system.
- Please contact with OLEOCON technical support for any further questions.

### INFORMATION

- Connection or disconnection of the counterparts under residual pressure are allowed.
- Flat face design prevents dirt or dust accumulation in the circuit.
- Environment friendly design which prevents fluid spillage during disconnection.
- Top quality sealing rings provides high level of protection.
- Linear flow prevents pressure drops and turbulences.
- Durable, safe, compact and simple to use design.
- Please ensure the cleanliness of all connection surfaces to avoid dirt or dust accumulation in the circuit.
- Please ensure the alignment and full connection of male and female parts.

## TECHNICAL DRAWING



BODY SIZE	DESCRIPTION	COUPLING GENDER	N	HEX		HEX		THREAD SIZE (A)	DIAMETER		LENGTH		OVERALL LENGTH		WEIGHT						
					mm	inch			mm	inch		mm	inch		mm	inch	Kg	Lbs			
19	APA-19A-G1	FEMALE	M50x3	C	46	1.81	Q	55	2.17	1"	E	59	2.33	F	115	4.54	G	218	8.62	0.413	0.909
	APA-19B-G1	MALE		B	46	1.81	P	55	2.17	1"	T	59	2.33	D	126	4.98		0.665	1.463		
25	APA-25A-G114	FEMALE	M58x3	C	55	2.17	Q	65	2.57	1-1/4"	E	70	2.77	F	123	4.86	G	234,5	9,27	0.524	1,153
	APA-25B-G114	MALE		B	55	2.17	P	65	2.57	1-1/4"	T	70	2.77	D	135	5.33		0.974	2,143		

BSPP ISO 1179-1

BODY SIZE	WORKING PRESSURE						BURST PRESSURE					
	COUPLE		FEMALE		MALE		COUPLE		FEMALE		MALE	
	MPa	PSI	MPa	PSI	MPa	PSI	MPa	PSI	MPa	PSI	MPa	PSI
6	-	-	-	-	-	-	-	-	-	-	-	-
19	35	5076	35	5076	35	5076	100	14500	100	14500	100	14500
25	30	4350	30	4350	30	4350	80	11600	80	11600	80	11600

BODY SIZE	RATED FLOW		
	PRES.DROP (kPa)	L/MIN	GPM
19	200	-	-
25	200	-	-