

# POPET TYPE - QCA SERIES



## TECHNICAL FEATURES AND OPTIONS

## 3D SECTION

	Locking Mechanism Screw to Connect		Flow Rate Up to 757 l / min		Material Carbon Steel Stainless Steel Brass
	Working Temperature -20 °C / +90 °C		Interchange ISO 7241-A		Connection System Single Action Sleeve
	Operating Pressure Up to 315 Bar		Available Threads BSP - NPT - Metric - SAE		Connection Under Pressure Connction: not Allowed Disconnection: not Allowed
	Body Sizes ISO 6.3 - 50		Sealing Description NBR - FKM		Valving Style Popet

## MAIN APPLICATIONS



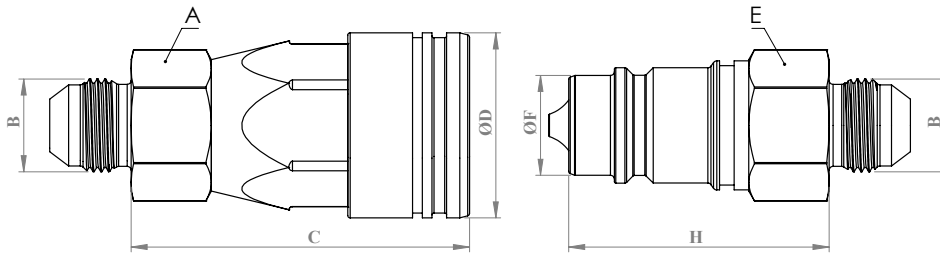
**WARNING**

- Connection or disconnection during flow and under dynamic pressure is not allowed.
- Connection or Disconnection is not allowed when the internal circuit temperature is higher than 80°C / 176°F
- Usage over the maximum working pressures is not allowed.
- Please ensure that the OLEOCON product series you have chosen is compatible with the temperature , material and pressure requirements of your system.
- Please contact with OLEOCON technical support for any further questions.

**INFORMATION**

- Do not connect or remove the counterparts under residual pressure.
- Top quality sealing rings provides high level of protection.
- The designs are developed to prevent pressure drops and turbulences.
- Durable and simple to use design.
- Please ensure the cleanliness of all connection surfaces to avoid dirt or dust accumulation in the circuit.
- Please ensure the alignment and full connection of male and female parts.

## TECHNICAL DRAWING

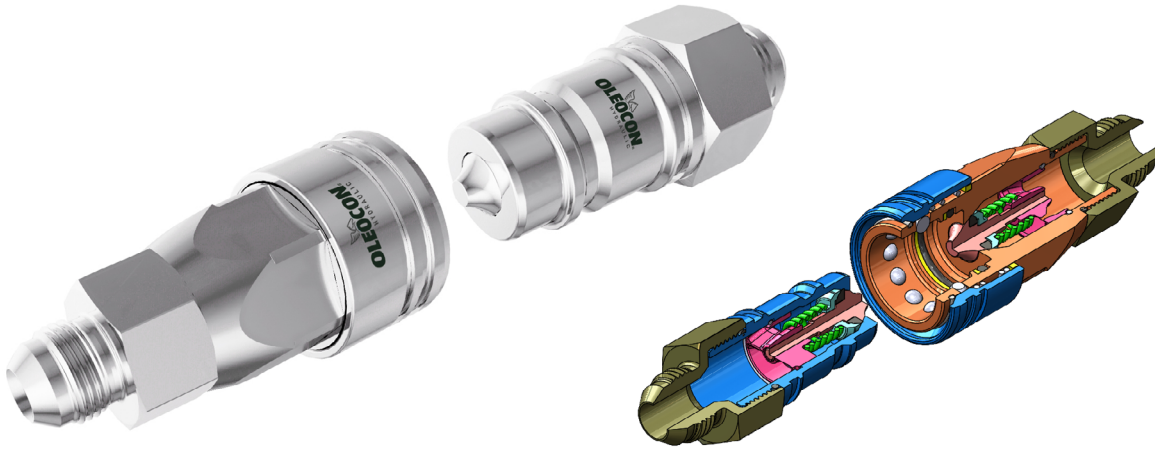


BODY SIZE	DESCRIPTION	COUPLING GENDER	Hex			THREAD SIZE(B)	DIAMETER			LENGTH		WEIGHT		
				mm	inch			mm	inch		mm	inch	kg	lbs
6.3	QCA-6A-MSAE4	FEMALE	A	-	-	7/16-20 UNF	D	-	-	C	-	-	-	-
	QCA-6B-MSAE4	MALE	E	-	-	7/16-20 UNF	F	-	-	H	-	-	-	-
10	QCA-10A-MSAE5	FEMALE	A	24	0.94	1/2-20 UNF	D	32	1.25	C	58	2.28	0.19	0.35
	QCA-10B-MSAE5	MALE	E	22	0.86	1/2-20 UNF	F	17.23	0.67	H	40	1.57	0.09	0.13
	QCA-10A-MSAE6	FEMALE	A	24	0.94	9/16-18 UNF	D	32	1.25	C	58	2.28	0.2	0.35
	QCA-10B-MSAE6	MALE	E	22	0.86	9/16-18 UNF	F	17.23	0.67	H	40	1.57	0.09	0.13
	QCA-10A-MSAE8	FEMALE	A	24	0.94	3/4-16 UNF	D	32	1.25	C	58	2.28	0.2	0.35
	QCA-10B-MSAE8	MALE	E	22	0.86	3/4-16 UNF	F	17.23	0.67	H	40	1.57	0.1	0.13
12.5	QCA-12A-MSAE8	FEMALE	A	30	1.18	3/4-16 UNF	D	38	1.49	C	69	2.71	0.3	0.59
	QCA-12B-MSAE8	MALE	E	27	1.06	3/4-16 UNF	F	20.48	0.80	H	47	1.85	0.13	0.19
	QCA-20A-MSAE8	FEMALE	A	38	1.49	3/4-16 UNF	D	46.1	1.81	C	83	3.26	0.57	1.07
	QCA-20B-MSAE8	MALE	E	36	1.41	3/4-16 UNF	F	29	1.14	H	56	2.20	0.27	0.46
	QCA-20A-MSAE10	FEMALE	A	38	1.49	7/8-14 UNF	D	46.1	1.81	C	83	3.26	0.58	1.07
QCA-20B-MSAE10	MALE	E	36	1.41	7/8-14 UNF	F	29	1.14	H	56	2.20	0.28	0.46	
20	QCA-20A-MSAE12	FEMALE	A	38	1.49	1 1/16-12 UN	D	46.1	1.81	C	83	3.26	0.6	1.07
	QCA-20B-MSAE12	MALE	E	36	1.41	1 1/16-12 UN	F	29	1.14	H	56	2.20	0.29	0.46

ISO 8434-2

BODY SIZE	WORKING PRESSURE						BURST PRESSURE					
	COUPLE		FEMALE		MALE		COUPLE		FEMALE		MALE	
	MP <sub>a</sub>	PSI	MP <sub>a</sub>	PSI	MP <sub>a</sub>	PSI	MP <sub>a</sub>	PSI	MP <sub>a</sub>	PSI	MP <sub>a</sub>	PSI
6	-	-	-	-	-	-	-	-	-	-	-	-
10	31.5	4567	31.5	4567	31.5	4567	126	18270	126	18270	126	18270
12.5	25	3625	25	3625	25	3625	100	14500	100	14500	100	14500
19	25	3625	25	3625	25	3625	100	14500	100	14500	100	14500
25	20	2900	20	2900	20	2900	80	11600	80	11600	80	11600
31.5	20	2900	20	2900	20	2900	80	11600	80	11600	80	11600
40	16	2320	16	2320	16	2320	64	9280	64	9280	64	9280
50	10	1450	10	1450	10	1450	40	5800	40	5800	40	5800

# POPET TYPE - QCA SERIES

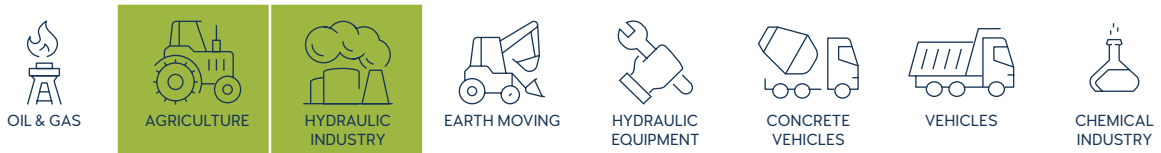


## TECHNICAL FEATURES AND OPTIONS

## 3D SECTION

	<b>Locking Mechanism</b> Screw to Connect		<b>Flow Rate</b> Up to 757 l / min		<b>Material</b> Carbon Steel Stainless Steel Brass
	<b>Working Temperature</b> -20 °C / +90 °C		<b>Interchange</b> ISO 7241-A		<b>Connection System</b> Single Action Sleeve
	<b>Operating Pressure</b> Up to 315 Bar		<b>Available Threads</b> BSP - NPT - Metric - SAE		<b>Connection Under Pressure</b> Connction: not Allowed Disconnection: not Allowed
	<b>Body Sizes</b> ISO 6.3 - 50		<b>Sealing Description</b> NBR - FKM		<b>Valving Style</b> Popet

## MAIN APPLICATIONS



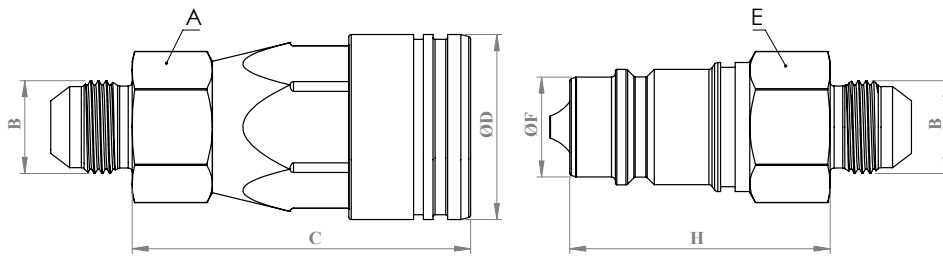
**WARNING**

- Connection or disconnection during flow and under dynamic pressure is not allowed.
- Connection or Disconnection is not allowed when the internal circuit temperature is higher than 80°C / 176°F
- Usage over the maximum working pressures is not allowed.
- Please ensure that the OLEOCON product series you have chosen is compatible with the temperature , material and pressure requirements of your system.
- Please contact with OLEOCON technical support for any further questions.

**INFORMATION**

- Do not connect or remove the counterparts under residual pressure.
- Top quality sealing rings provides high level of protection.
- The designs are developed to prevent pressure drops and turbulences.
- Durable and simple to use design.
- Please ensure the cleanliness of all connection surfaces to avoid dirt or dust accumulation in the circuit.
- Please ensure the alignment and full connection of male and female parts.

## TECHNICAL DRAWING



BODY SIZE	DESCRIPTION	COUPLING GENDER	Hex		THREAD SIZE(B)	DIAMETER		LENGTH		WEIGHT				
				mm		inch		mm	inch	mm	inch	kg	lbs	
25	QCA-25A-MSAE12	FEMALE	A	46	1.81	11/16-12 UN	D	54	2.12	C	99.2	3.90	0.7	1.65
	QCA-25B-MSAE12	MALE	E	41	1.61	11/16-12 UN	F	34.21	1.34	H	66	2.59	0.34	0.68
31.5	QCA-31A-MSAE12	FEMALE	A	55	2.16	11/16-12 UN	D	68	2.67	C	117.2	4.61	1.31	2.88
	QCA-31B-MSAE12	MALE	E	50	1.96	11/16-12 UN	F	44.9	44.9	H	75	2.95	0.51	1.12
	QCA-31A-MSAE16	FEMALE	A	55	2.16	15/16-12 UN	D	68	2.67	C	117.2	4.61	1.31	2.88
	QCA-31B-MSAE16	MALE	E	50	1.96	15/16-12 UN	F	44.9	44.9	H	75	2.95	0.51	1.12
	QCA-31A-MSAE20	FEMALE	A	55	2.16	15/8-12 UN	D	68	2.67	C	117.2	4.61	1.31	2.88
	QCA-31B-MSAE20	MALE	E	50	1.96	15/8-12 UN	F	44.9	44.9	H	75	2.95	0.51	1.12
40	QCA-40A-MSAE20	FEMALE	A	70	2.75	15/8-12 UN	D	83	3.26	C	134.2	5.28	2.66	5.85
	QCA-40B-MSAE20	MALE	E	60	2.36	15/8-12 UN	F	54.93	2.16	H	84	3.30	0.96	2.11
	QCA-40A-MSAE24	FEMALE	A	70	2.75	17/8-12 UN	D	83	3.26	C	134.2	5.28	2.66	5.85
	QCA-40B-MSAE24	MALE	E	60	2.36	17/8-12 UN	F	54.93	2.16	H	84	3.30	0.96	2.11
50	QCA-50A-MSAE24	FEMALE	A	80	3.14	17/8-12 UN	D	99	3.89	C	160.2	6.30	3.89	8.55
	QCA-50B-MSAE24	MALE	E	75	2.95	17/8-12 UN	F	65	2.55	H	97	3.81	1.48	3.25
	QCA-50A-MSAE32	FEMALE	A	80	3.14	21/2-12 UN	D	99	3.89	C	160.2	6.30	3.89	8.55
	QCA-50B-MSAE32	MALE	E	75	2.95	21/2-12 UN	F	65	2.55	H	97	3.81	1.48	3.25

ISO-8434-2

BODY SIZE	WORKING PRESSURE						BURST PRESSURE					
	COUPLE		FEMALE		MALE		COUPLE		FEMALE		MALE	
	MPa	PSI	MPa	PSI	MPa	PSI	MPa	PSI	MPa	PSI	MPa	PSI
6	-	-	-	-	-	-	-	-	-	-	-	-
10	31.5	4567	31.5	4567	31.5	4567	126	18270	126	18270	126	18270
12.5	25	3625	25	3625	25	3625	100	14500	100	14500	100	14500
19	25	3625	25	3625	25	3625	100	14500	100	14500	100	14500
25	20	2900	20	2900	20	2900	80	11600	80	11600	80	11600
31.5	20	2900	20	2900	20	2900	80	11600	80	11600	80	11600
40	16	2320	16	2320	16	2320	64	9280	64	9280	64	9280
50	10	1450	10	1450	10	1450	40	5800	40	5800	40	5800