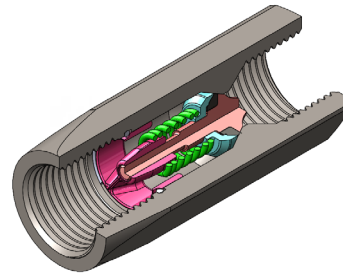
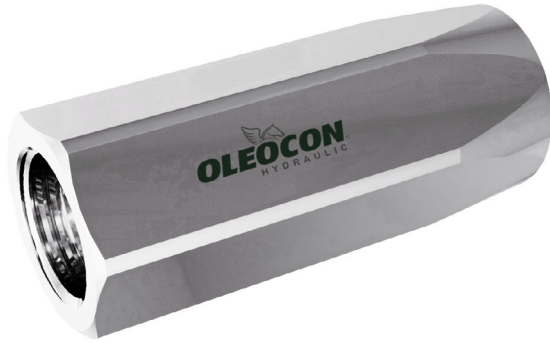


CHECK VALVE



TECHNICAL FEATURES AND OPTIONS

3D SECTION



Working Temperature
-20 °C / +80 °C



Flow Rate
Up to 750 l / min



Material
Carbon Steel
Stainless Steel



Operating Pressure
Up to 350 Bar



Available Threads
BSP - NPT - SAE



Available Sizes
From 1/4" to 2"



Sealing Description
NBR - FKM

MAIN APPLICATIONS



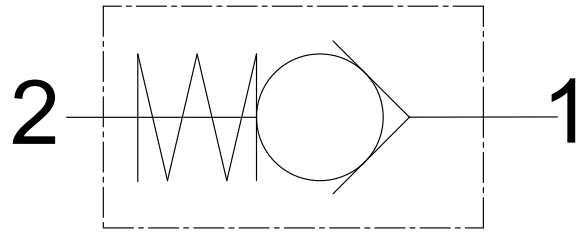
WARNING

- Please be void of abnormal operating conditions. (For e.g., oscillations, impulse pressures, water hammering, cavitation, and proportions of solid materials and abrasives.)
- Please do not touch the valves at working temperature s lower than -20°C or higher than +50°C
- Please ensure the cleanliness of all connection surfaces to avoid dirt or dust accumulation in the circuit.
- Please ensure the alignment and full connection of the assembly parts.
- Please do not use over the maximum working pressures.
- Please ensure that the OLEOCON product series you have chosen is compatible with the temperature , material, and pressure requirements of your system.
- Please contact with OLEOCON technical support for any further questions.

INFORMATION

- Optimal wearing resistance of the hardened sealing piston.
- Compact slim design.
- Different cracking pressure available upon request.
- Simple to use.

TECHNICAL DRAWING



BODY SIZE	DESCRIPTION	Hex		THREAD SIZE(B)	DIAMETER			LENGTH		WEIGHT			
		mm	inch		mm	inch	mm	inch	kg	lbs			
6.3	CV-6-G14	A	19	-	1/4"	D	-	-	C	-	-	-	-
10	CV-10-G38	A	24	0.94	3/8"	D	32	1.25	C	58	2.28	0.16	0.35
12.5	CV-12-G12	A	30	1.18	1/2"	D	38	1.49	C	69	2.71	0.27	0.59
20	CV-20-G34	A	38	1.49	3/4"	D	46.1	1.81	C	83	3.26	0.49	1.07
25	CV-25-G1	A	46	1.81	1"	D	54	2.12	C	99.2	3.90	0.75	1.65
31.5	CV-31-G114	A	55	2.16	1 1/4"	D	68	2.67	C	117.2	4.61	1.31	2.88
40	CV-40-G112	A	70	2.75	1 1/2"	D	83	3.26	C	134.2	5.28	2.66	5.85
50	CV-50-G2	A	80	3.14	2"	D	99	3.89	C	160.2	6.30	3.89	8.55

ISO 1179-1

BODY SIZE	DESCRIPTION	Hex		THREAD SIZE(B)	DIAMETER			LENGTH		WEIGHT			
		mm	inch		mm	inch	mm	inch	kg	lbs			
6.3	CV-6-NPT14	A	-	-	1/4"	D	-	-	C	-	-	-	-
10	CV-10-NPT38	A	24	0.94	3/8"	D	32	1.25	C	58	2.28	0.16	0.35
12.5	CV-12-NPT12	A	30	1.18	1/2"	D	38	1.49	C	69	2.71	0.27	0.59
20	CV-20-NPT34	A	38	1.49	3/4"	D	46.1	1.81	C	83	3.26	0.49	1.07
25	CV-25-NPT1	A	46	1.81	1"	D	54	2.12	C	99.2	3.90	0.75	1.65
31.5	CV-31-NPT114	A	55	2.16	1 1/4"	D	68	2.67	C	117.2	4.61	1.31	2.88
40	CV-40-NPT112	A	70	2.75	1 1/2"	D	83	3.26	C	134.2	5.28	2.66	5.85
50	CV-50-NPT2	A	80	3.14	2"	D	99	3.89	C	160.2	6.30	3.89	8.55

ASME B1.20.1 NPT

BODY SIZE	DESCRIPTION	Hex		THREAD SIZE(B)	DIAMETER			LENGTH		WEIGHT			
		mm	inch		mm	inch	mm	inch	kg	lbs			
6.3	CV-6-SAE4	A	-	-	7/16 UNF	D	-	-	C	-	-	-	-
10	CV-10-SAE6	A	24	0.94	9/16 UNF	D	32	1.25	C	58	2.28	0.16	0.35
12.5	CV-12-SAE 8	A	30	1.18	3/4 UNF	D	38	1.49	C	69	2.71	0.27	0.59
20	CV-20-SAE12	A	38	1.49	1 1/16 UN	D	46.1	1.81	C	83	3.26	0.49	1.07
25	CV-25-SAE16	A	46	1.81	15/16 UN	D	54	2.12	C	99.2	3.90	0.75	1.65
31.5	CV-31-SAE20	A	55	2.16	15/8 UN	D	68	2.67	C	117.2	4.61	1.31	2.88
40	CV-40-SAE24	A	70	2.75	1 7/8 UN	D	83	3.26	C	134.2	5.28	2.66	5.85
50	CV-50-SAE32	A	80	3.14	2 1/2 UN	D	99	3.89	C	160.2	6.30	3.89	8.55

ISO 11926-1