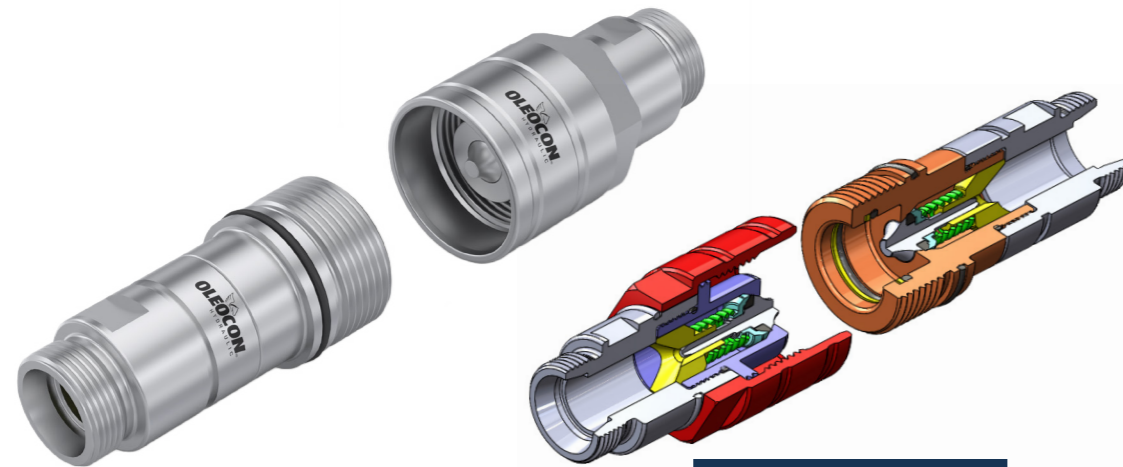


POPPET SCREW - QC - STC SERIES

METRIC (L)

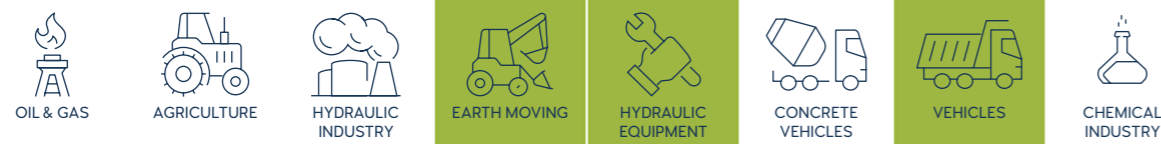


[CLICK HERE FOR 3D SECTION](#)

TECHNICAL FEATURES AND OPTIONS

- Locking Mechanism**
Screw to Connect
- Flow Rate**
Up to 189 l / min
- Material**
Carbon Steel
Stainless Steel
- Working Temperature**
-20 °C / +90 °C
- Interchange**
ISO 14541
- How to Connect**
Screw
- Operating Pressure**
Up to 350 Bar
- Available Threads**
BSP - NPT - Metric - SAE
- Under Residual Pressure**
Connction: Both Side
Disconnection: Allowed
- Available Sizes**
From 1/4" to 1"
- Sealing Description**
NBR - FKM
- Valve Type**
Popet

MAIN APPLICATIONS



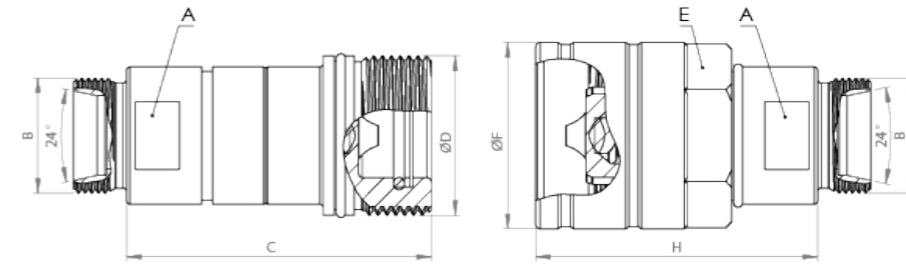
INFORMATION

- Connection under residual pressure is allowed on both sides.
- Disconnection under residual pressure is allowed.
- Top quality elastomer seals provide maximum sealing.
- The external sealing ring ensures a solid connection and prevents disconnection due to vibration.
- The design prevents pressure drops and turbulences.
- Durable, safe, compact and easy to use design.
- Please clean the mating surfaces thoroughly before connecting, in order to prevent contaminants to enter into the system.
- Please make sure that the male and female parts are aligned properly to achive full connection.

WARNING

- Connection and disconnection under dynamic pressure is not allowed.
- Connection and disconnection is not allowed when the temperature of the circulating fluid is above 80°C / 176°F.
- Make sure the system pressure is below the maximum working pressure.
- Please ensure that the OLEOCON product you have chosen is compatible with the temperature , material and pressure requirements of your system.
- Please contact OLEOCON technical support for any further questions.

TECHNICAL DRAWING



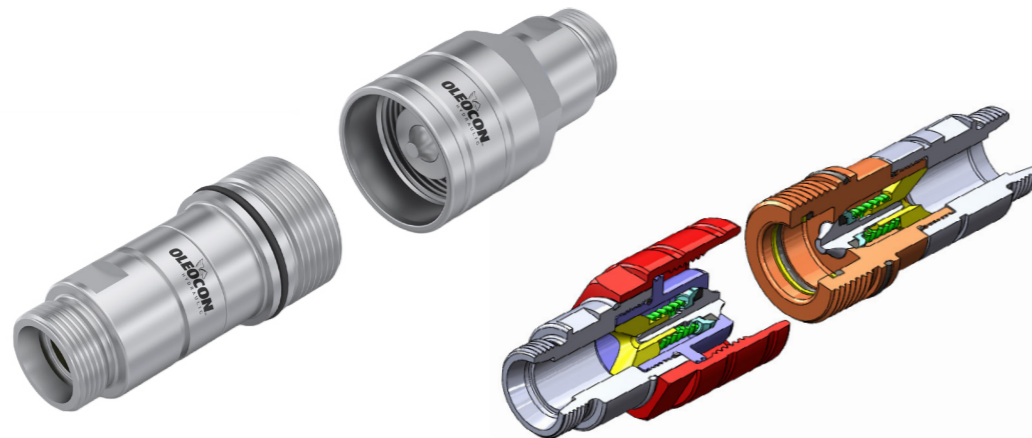
BODY SIZE	DESCRIPTION	COUPLING GENDER	THREAD TYPE	Hex		THREAD SIZE(B)	DIAMETER		LENGTH		WEIGHT				
				mm	inch		mm	inch	mm	inch	kg	lbs			
6.3	QC-STC-6A-M6L	FEMALE	BSP	A	17	0.66	M12*1.5	D	M24*2	-	C	61.7	2.42	0.24	0.528
	QC-STC-6B-M6L	MALE	BSP	E	30	1.18	M12*1.5	F	34	-	H	59	2.32	0.15	0.33
10	QC-STC-10A-M8L	FEMALE	BSP	A	22	0.86	M14*1.5	D	M28*2	-	C	62.9	2.47	0.22	0.484
	QC-STC-10B-M8L	MALE	BSP	E	30	1.18	M14*1.5	F	34	-	H	60.5	2.38	0.2	0.44
	QC-STC-10A-M10L	FEMALE	BSP	A	22	0.86	M16*1.5	D	M28*2	-	C	62.9	2.47	0.23	0.506
	QC-STC-10B-M10L	MALE	BSP	E	30	1.18	M16*1.5	F	34	-	H	60.5	2.38	0.21	0.462
	QC-STC-10A-M12L	FEMALE	BSP	A	22	0.86	M18*1.5	D	M28*2	-	C	62.9	2.47	0.22	0.484
	QC-STC-10B-M12L	MALE	BSP	E	30	1.18	M18*1.5	F	34	-	H	60.5	2.38	0.2	0.44
12.5	QC-STC-12A-M12L	FEMALE	BSP	A	27	1.06	M18*1.5	D	M36*2	-	C	69	2.71	0.35	0.77
	QC-STC-12B-M12L	MALE	BSP	E	36	1.41	M18*1.5	F	42.1	-	H	63.8	2.51	0.33	0.726
	QC-STC-12A-M15L	FEMALE	BSP	A	27	1.06	M22*1.5	D	M36*2	-	C	69	2.71	0.35	0.77
	QC-STC-12B-M15L	MALE	BSP	E	36	1.41	M22*1.5	F	42.1	-	H	63.8	2.51	0.34	0.748
	QC-STC-12A-M18L	FEMALE	BSP	A	27	1.06	M26*1.5	D	M36*2	-	C	69	2.71	0.35	0.77
	QC-STC-12B-M18L	MALE	BSP	E	36	1.41	M26*1.5	F	42.1	-	H	63.8	2.51	0.34	0.748
19	QC-STC-20A-M15L	FEMALE	BSP	A	32	1.25	M22*1.5	D	M42*2	-	C	85.5	3.36	0.54	1.188
	QC-STC-20B-M15L	MALE	BSP	E	41	1.61	M22*1.5	F	48.5	-	H	76	2.99	0.52	1.144
	QC-STC-20A-M18L	FEMALE	BSP	A	32	1.25	M26*1.5	D	M42*2	-	C	85.5	3.36	0.55	1.21
	QC-STC-20B-M18L	MALE	BSP	E	41	1.61	M26*1.5	F	48.5	-	H	76	2.99	0.53	1.166
	QC-STC-20A-M22L	FEMALE	BSP	A	32	1.25	M30*2	D	M42*2	-	C	85.5	3.36	0.54	1.188
	QC-STC-20B-M22L	MALE	BSP	E	41	1.61	M30*2	F	48.5	-	H	76	2.99	0.52	1.144
25	QC-STC-25A-M18L	FEMALE	BSP	A	41	1.61	M26*1.5	D	M48*3	-	C	97.5	3.83	0.78	1.716
	QC-STC-25B-M18L	MALE	BSP	E	50	1.96	M26*1.5	F	54.5	-	H	82	3.22	0.81	1.782
	QC-STC-25A-M22L	FEMALE	BSP	A	41	1.61	M30*2	D	M48*3	-	C	97.5	3.83	0.78	1.716
	QC-STC-25B-M22L	MALE	BSP	E	50	1.96	M30*2	F	54.5	-	H	82	3.22	0.805	1.771
	QC-STC-25A-M28L	FEMALE	BSP	A	41	1.61	M36*2	D	M48*3	-	C	97.5	3.83	0.76	1.672
	QC-STC-25B-M28L	MALE	BSP	E	50	1.96	M36*2	F	54.5	-	H	82	3.22	0.79	1.738

ISO-8434-1

BODY SIZE	WORKING PRESSURE						BURST PRESSURE					
	COUPLE		FEMALE		MALE		COUPLE		FEMALE		MALE	
	MPa	PSI	MPa	PSI	MPa	PSI	MPa	PSI	MPa	PSI	MPa	PSI
6	35	5075	35	5075	35	5075	140	20300	140	20300	140	20300
10	30	4350	30	4350	30	4350	120	17400	120	17400	120	17400
12.5	30	4350	30	4350	30	4350	120	17400	120	17400	120	17400
19	25	3625	25	3625	25	3625	100	14500	100	14500	100	14500
25	20	2900	20	2900	20	2900	80	11600	80	11600	80	11600

POPPET SCREW - QC - STC SERIES

METRIC (S)

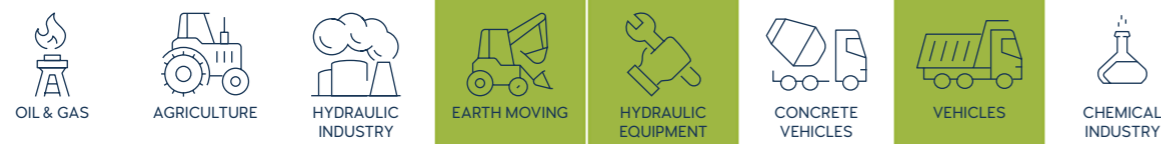


[CLICK HERE FOR 3D SECTION](#)

TECHNICAL FEATURES AND OPTIONS

Locking Mechanism Screw to Connect	Flow Rate Up to 189 l / min	Material Carbon Steel Stainless Steel
Working Temperature -20 °C / +90 °C	Interchange ISO 14541	How to Connect Screw
Operating Pressure Up to 350 Bar	Available Threads BSP - NPT - Metric - SAE	Under Residual Pressure Connexion: Both Side Disconnection: Allowed
Available Sizes From 1/4" to 1"	Sealing Description NBR - FKM	Valve Type Poppet

MAIN APPLICATIONS



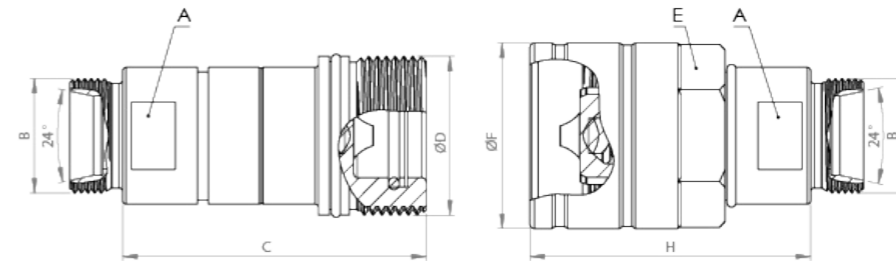
INFORMATION

- Connection under residual pressure is allowed on both sides.
- Disconnection under residual pressure is allowed.
- Top quality elastomer seals provide maximum sealing.
- The external sealing ring ensures a solid connection and prevents disconnection due to vibration.
- The design prevents pressure drops and turbulences.
- Durable, safe, compact and easy to use design.
- Please clean the mating surfaces thoroughly before connecting, in order to prevent contaminants to enter into the system.
- Please make sure that the male and female parts are aligned properly to achieve full connection.

WARNING

- Connection and disconnection under dynamic pressure is not allowed.
- Connection and disconnection is not allowed when the temperature of the circulating fluid is above 80°C / 176°F.
- Make sure the system pressure is below the maximum working pressure.
- Please ensure that the OLEOCON product you have chosen is compatible with the temperature, material and pressure requirements of your system.
- Please contact OLEOCON technical support for any further questions.

TECHNICAL DRAWING



BODY SIZE	DESCRIPTION	COUPLING GENDER	THREAD TYPE	Hex		THREAD SIZE(B)	DIAMETER		LENGTH		WEIGHT				
				mm	inch		mm	inch	mm	inch	kg	lbs			
6.3	QC-STC-6A-M6S	FEMALE	BSP	A	17	0.66	M14*1.5	D	M24*2	-	C	61.7	2.42	0.24	0.528
	QC-STC-6B-M6S	MALE	BSP	E	30	1.18	M14*1.5	F	34	-	H	59	2.32	0.15	0.33
10	QC-STC-10A-M8S	FEMALE	BSP	A	22	0.86	M16*1.5	D	M28*2	-	C	62.9	2.47	0.23	0.506
	QC-STC-10B-M8S	MALE	BSP	E	30	1.18	M16*1.5	F	34	-	H	60.5	2.38	0.2	0.44
	QC-STC-10A-M10S	FEMALE	BSP	A	22	0.86	M18*1.5	D	M28*2	-	C	62.9	2.47	0.23	0.506
	QC-STC-10B-M10S	MALE	BSP	E	30	1.18	M18*1.5	F	34	-	H	60.5	2.38	0.2	0.44
	QC-STC-10A-M12S	FEMALE	BSP	A	22	0.86	M20*1.5	D	M28*2	-	C	62.9	2.47	0.23	0.506
	QC-STC-10B-M12S	MALE	BSP	E	30	1.18	M20*1.5	F	34	-	H	60.5	2.38	0.2	0.44
12.5	QC-STC-12A-M10S	FEMALE	BSP	A	27	1.06	M18*1.5	D	M36*2	-	C	69	2.71	0.35	0.77
	QC-STC-12B-M10S	MALE	BSP	E	36	1.41	M18*1.5	F	42.1	-	H	63.8	2.51	0.34	0.748
	QC-STC-12A-M12S	FEMALE	BSP	A	27	1.06	M20*1.5	D	M36*2	-	C	69	2.71	0.36	0.792
	QC-STC-12B-M12S	MALE	BSP	E	36	1.41	M20*1.5	F	42.1	-	H	63.8	2.51	0.35	0.77
	QC-STC-12A-M16S	FEMALE	BSP	A	27	1.06	M24*1.5	D	M36*2	-	C	69	2.71	0.36	0.792
	QC-STC-12B-M16S	MALE	BSP	E	36	1.41	M24*1.5	F	42.1	-	H	63.8	2.51	0.35	0.77
19	QC-STC-20A-M12S	FEMALE	BSP	A	32	1.25	M20*1.5	D	M42*2	-	C	85.5	3.36	0.56	1.232
	QC-STC-20B-M12S	MALE	BSP	E	41	1.61	M20*1.5	F	48.5	-	H	76	2.99	0.54	1.188
	QC-STC-20A-M16S	FEMALE	BSP	A	32	1.25	M24*1.5	D	M42*2	-	C	85.5	3.36	0.57	1.254
	QC-STC-20B-M16S	MALE	BSP	E	41	1.61	M24*1.5	F	48.5	-	H	76	2.99	0.54	1.188
	QC-STC-20A-M20S	FEMALE	BSP	A	32	1.25	M30*2	D	M42*2	-	C	85.5	3.36	0.57	1.254
	QC-STC-20B-M20S	MALE	BSP	E	41	1.61	M30*2	F	48.5	-	H	76	2.99	0.55	1.21
25	QC-STC-25A-M16S	FEMALE	BSP	A	41	1.61	M24*1.5	D	M48*3	-	C	97.5	3.83	0.67	1.474
	QC-STC-25B-M16S	MALE	BSP	E	50	1.96	M24*1.5	F	54.5	-	H	82	3.22	0.65	1.43
	QC-STC-25A-M20S	FEMALE	BSP	A	41	1.61	M30*2	D	M48*3	-	C	97.5	3.83	0.68	1.496
	QC-STC-25B-M20S	MALE	BSP	E	50	1.96	M30*2	F	54.5	-	H	82	3.22	0.66	1.452
	QC-STC-25A-M25S	FEMALE	BSP	A	41	1.61	M36*2	D	M48*3	-	C	97.5	3.83	0.69	1.518
QC-STC-25B-M25S	MALE	BSP	E	50	1.96	M36*2	F	54.5	-	H	82	3.22	0.67	1.474	

ISO-8434-1

BODY SIZE	WORKING PRESSURE						BURST PRESSURE					
	COUPLE		FEMALE		MALE		COUPLE		FEMALE		MALE	
	MPa	PSI	MPa	PSI	MPa	PSI	MPa	PSI	MPa	PSI	MPa	PSI
6	35	5075	35	5075	35	5075	140	20300	140	20300	140	20300
10	30	4350	30	4350	30	4350	120	17400	120	17400	120	17400
12.5	30	4350	30	4350	30	4350	120	17400	120	17400	120	17400
19	25	3625	25	3625	25	3625	100	14500	100	14500	100	14500
25	20	2900	20	2900	20	2900	80	11600	80	11600	80	11600