

FLAT FACE - QCF SERIES

BSP MALE

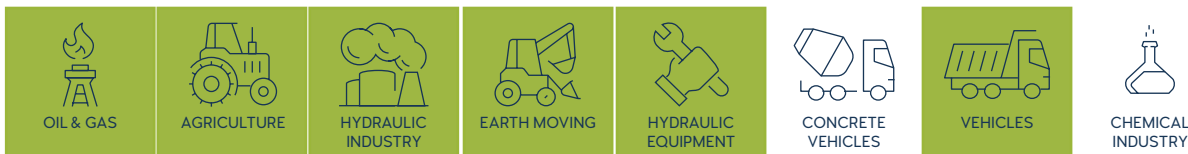


[CLICK HERE FOR 3D SECTION](#)

TECHNICAL FEATURES AND OPTIONS

- Locking Mechanism**
Locking Ball System
+ Safety Lock
- Flow Rate**
Up to 189 l / min
- Material**
Carbon Steel
Stainless Steel
Brass
- Working Temperature**
-20 °C / +90 °C
- Interchange**
16028
- How to Connect**
Push
- Operating Pressure**
Up to 250 Bar
- Available Threads**
BSP - NPT - Metric - SAE
- Under Residual Pressure**
Connction: Not Allowed
Disconnection: Not Allowed
- Body Sizes**
ISO 6.3-25
- Sealing Description**
NBR - FKM
- Valve Type**
Flat Face

MAIN APPLICATIONS



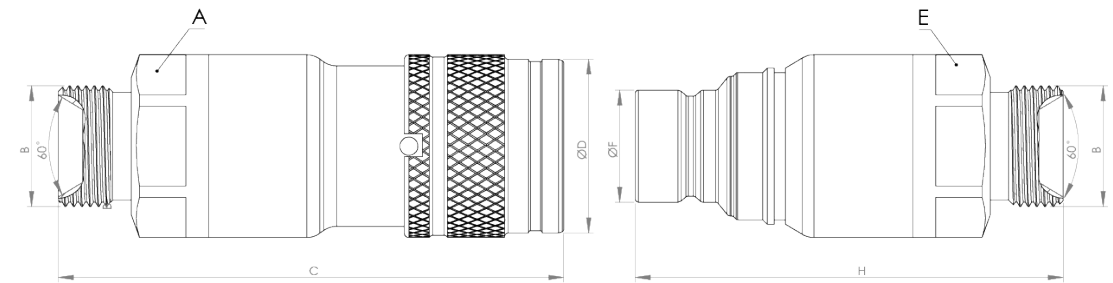
INFORMATION

- Flat face design prevents dirt and dust accumulation in the system.
- Top quality elastomer seals provide maximum sealing and prevent oil leakage during disconnection.
- Laminar flow prevents pressure drops and turbulences.
- Durable, safe, compact and easy to use design.
- Please clean the mating surfaces thoroughly before connecting, in order to prevent contaminants to enter into the system.
- Please make sure that the male and female parts are aligned properly to achieve full connection.
- Safety lock feature prevents accidental disconnection.

WARNING

- Connection and disconnection under dynamic pressure is not allowed.
- Connection and disconnection is not allowed when the temperature of the circulating fluid is above 80°C / 176°F.
- Make sure the system pressure is below the maximum working pressure.
- Please ensure that the OLEOCON product you have chosen is compatible with the temperature, material and pressure requirements of your system.
- Please contact OLEOCON technical support for any further questions.

TECHNICAL DRAWING



BODY SIZE	DESCRIPTION	COUPLING GENDER	Hex		THREAD SIZE(B)	DIAMETER		LENGTH		WEIGHT				
			mm	inch		mm	inch	mm	inch	kg	lbs			
06	QCF-6A-G14M	FEMALE	A	26	1.02	1/4	D	28	1.1	C	83	3.27	0.25	0.55
	QCF-6B-G14M	MALE	E	26	1.02	1/4	F	16.15	0.64	H	73	2.87	0.17	0.37
10	QCF-10A-G38M	FEMALE	A	30	1.18	3/8	D	32	1.25	C	84	3.30	0.39	0.858
	QCF-10B-G38M	MALE	E	30	1.18	3/8	F	19.7	0.77	H	74	2.91	0.25	0.55
	QCF-10A-G12M	FEMALE	A	30	1.18	1/2	D	32	1.25	C	83	3.26	0.4	0.88
	QCF-10B-G12M	MALE	E	30	1.18	1/2	F	19.7	0.77	H	73	2.87	0.26	0.572
12.5	QCF-12A-G12M	FEMALE	A	36	1.41	1/2	D	38	1.49	C	99	3.89	0.64	1.408
	QCF-12B-G12M	MALE	E	36	1.41	1/2	F	24.5	0.96	H	82	3.22	0.41	0.902
	QCF-12A-G34M	FEMALE	A	36	1.41	3/4	D	38	1.49	C	98	3.85	0.64	1.408
19	QCF-12B-G34M	MALE	E	36	1.41	3/4	F	24.5	0.96	H	81	3.18	0.41	0.902
	QCF-19A-G34M	FEMALE	A	41	1.61	3/4	D	46.1	1.81	C	116	4.56	0.98	2.156
	QCF-19B-G34M	MALE	E	41	1.61	3/4	F	29.9	1.17	H	97	3.81	0.6	1.32
25	QCF-19A-G1M	FEMALE	A	41	1.61	1	D	46.1	1.81	C	115	4.52	0.99	2.178
	QCF-19B-G1M	MALE	E	41	1.61	1	F	29.9	1.17	H	96	3.77	0.61	1.342
	QCF-25A-G1M	FEMALE	A	50	1.96	1	D	55	2.16	C	123	4.84	1.64	3.608
25	QCF-25B-G1M	MALE	E	50	1.96	1	F	36	1.41	H	106	4.17	0.96	2.112
	QCF-25A-G114M	FEMALE	A	55	2.16	1 1/4	D	55	2.16	C	121	4.76	1.55	3.41
	QCF-25B-G114M	MALE	E	55	2.16	1 1/4	F	36	1.41	H	104	4.09	0.97	2.134

ISO 8434-6

BODY SIZE	WORKING PRESSURE						BURST PRESSURE					
	COUPLE		FEMALE		MALE		COUPLE		FEMALE		MALE	
	MPa	PSI	MPa	PSI	MPa	PSI	MPa	PSI	MPa	PSI	MPa	PSI
6	31.5	4568	31.5	4568	31.5	4568	126	18270	126	18270	126	18270
10	25	3625	25	3625	25	3625	100	14500	100	14500	100	14500
12.5	25	3625	25	3625	25	3625	100	14500	100	14500	100	14500
19	25	3625	25	3625	25	3625	100	14500	100	14500	100	14500
25	20	2900	20	2900	20	2900	80	11600	80	11600	80	11600