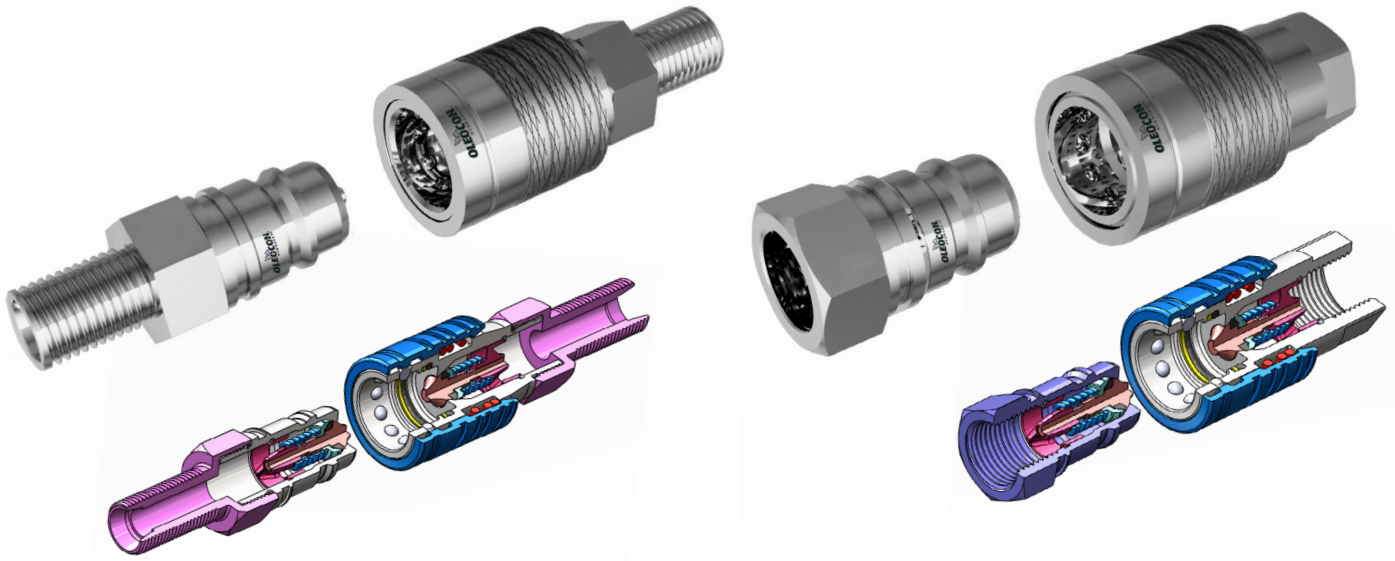


PUSH PULL



3D SECTION

TECHNICAL FEATURES AND OPTIONS

3D SECTION



Locking Mechanism
Locking Ball System



Flow Rate
Up to 45 l / min



Material
Carbon Steel
Stainless Steel
Brass



Working Temperature
-20 °C / +100 °C



Interchange
ISO 7241-A



Connection System
Single Action Sleeve



Operating Pressure
Up to 315 Bar



Available Threads
BSP - Metric



Connection Under Pressure
Connection: not Allowed
Disconnection: not Allowed



Body Sizes
ISO 12.5



Sealing Description
NBR - FKM



Valving Style
Popet

MAIN APPLICATIONS



OIL & GAS



AGRICULTURE



HYDRAULIC INDUSTRY



EARTH MOVING



HYDRAULIC EQUIPMENT



CONCRETE VEHICLES



VEHICLES



CHEMICAL INDUSTRY

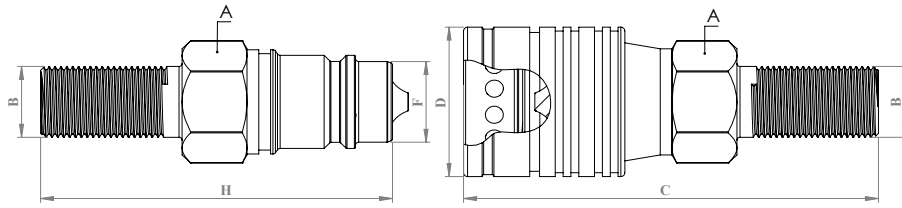
WARNING

- Connection or disconnection during flow and under dynamic pressure is not allowed.
- Connection or Disconnection is not allowed when the internal circuit temperature is higher than 80°C / 176°F
- Usage over the maximum working pressures is not allowed.
- Please ensure that the OLEOCON product series you have chosen is compatible with the temperature , material and pressure requirements of your system.
- Please contact with OLEOCON technical support for any further questions.

INFORMATION

- Do not connect or remove the counterparts under residual pressure.
- Top quality sealing rings provides high level of protection.
- The designs are developed to prevent pressure drops and turbulences.
- Durable and simple to use design.
- Please ensure the cleanliness of all connection surfaces to avoid dirt or dust accumulation in the circuit.
- Please ensure the alignment and full connection of male and female parts.

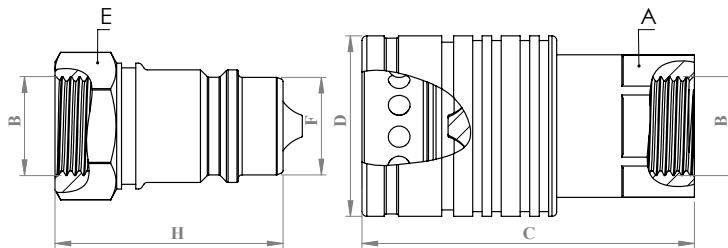
TECHNICAL DRAWING



| BODY SIZE | DESCRIPTION | COUPLING GENDER | THREAD TYPE | Hex | | THREAD SIZE(B) | DIAMETER | | LENGTH | | WEIGHT | | | | |
|-----------|-------------|-----------------|-------------|-----|------|----------------|----------|------|--------|------|--------|-------|------|------|------|
| | | | | mm | inch | | mm | inch | mm | inch | kg | lbs | | | |
| 12,5 | PPB-12A-12L | FEMALE | M | A | 27 | 1,06 | M18*1,5 | D | 38 | 1,49 | C | 105,5 | 4,01 | 0,32 | 0,70 |
| | PPB-12B-12L | MALE | M | E | 27 | 1,06 | M18*1,5 | F | 20,48 | 0,8 | H | 89,5 | 3,52 | 0,14 | 0,30 |

ISO 8434-1

TECHNICAL DRAWING



| BODY SIZE | DESCRIPTION | COUPLING GENDER | THREAD TYPE | Hex | | THREAD SIZE(B) | DIAMETER | | LENGTH | | WEIGHT | | | | |
|-----------|-------------|-----------------|-------------|-----|------|----------------|----------|------|--------|------|--------|------|------|------|------|
| | | | | mm | inch | | mm | inch | mm | inch | kg | lbs | | | |
| 12,5 | PP-12A-G12 | FEMALE | BSP | A | 27 | 1,06 | 1/2" | D | 38 | 1,49 | C | 69 | 2,71 | 0,3 | 0,66 |
| | QC-12B-G12 | MALE | BSP | E | 27 | 1,06 | 1/2" | F | 20,48 | 0,8 | H | 53,5 | 2,10 | 0,09 | 0,19 |

ISO 1179-1