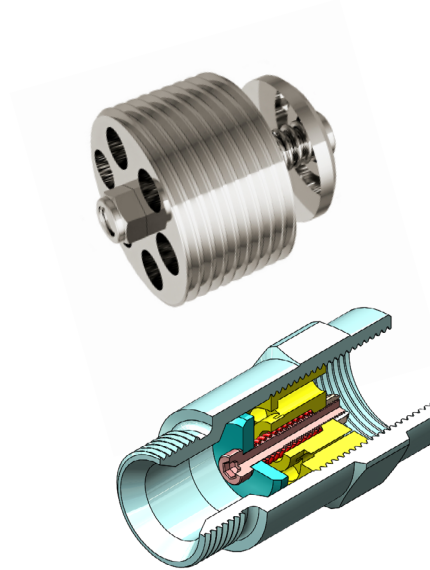


HOSE BURST VALVE



TECHNICAL FEATURES AND OPTIONS

3D SECTION



Working Temperature
-20 °C / +80 °C



Flow Rate
Up to 180 l / min



Material
Carbon Steel
Stainless Steel



Operating Pressure
Up to 420 Bar



Available Threads
BSP



Available Sizes
From 1/4" to 1"



Sealing Description
NBR - FKM

MAIN APPLICATIONS



OIL & GAS



AGRICULTURE



HYDRAULIC INDUSTRY



EARTH MOVING



HYDRAULIC EQUIPMENT



CONCRETE VEHICLES



VEHICLES



CHEMICAL INDUSTRY

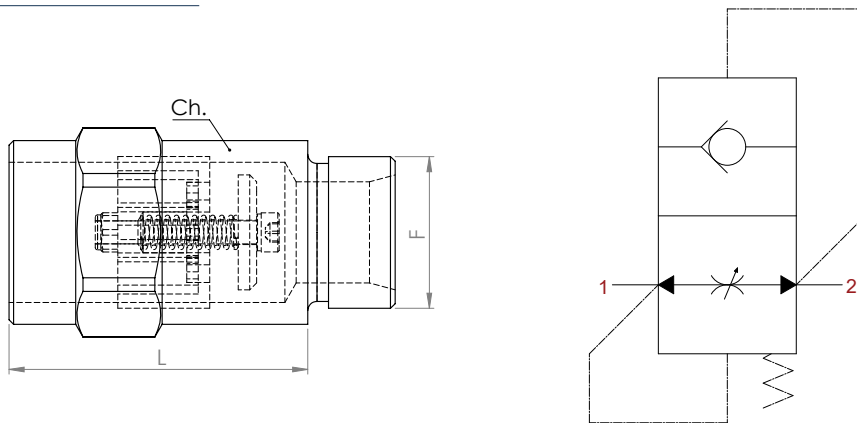
WARNING

- Please be void of abnormal operating conditions. (For e.g., oscillations, impulse pressures, water hammering, cavitation, and proportions of solid materials and abrasives.)
- Please do not touch the valves at working temperature s lower than -20°C or higher than +50°C
- Please ensure the cleanliness of all connection surfaces to avoid dirt or dust accumulation in the circuit.
- Please ensure the alignment and full connection of the assembly parts.
- Please do not use over the maximum working pressures.
- Please ensure that the OLEOCON product series you have chosen is compatible with the temperature , material, and pressure requirements of your system.
- Please contact with OLEOCON technical support for any further questions.

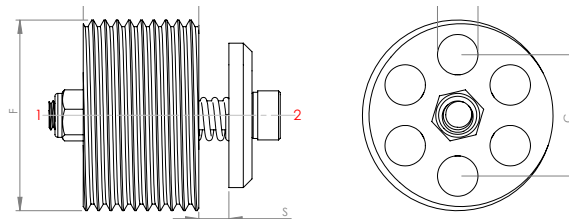
INFORMATION

- HPV Series hydraulic hose break valves are used to prevent the uncontrolled descent of load in case of hose breakage.
- Cartridge type valves are mounted directly into the cylinder and inline valves are mounted directly into the cyclinder.
- Hose break valves are normally open during operation. If fluid flows in the reverse direction and flow exceeds setting value of the valve the closing disc will shut the flow by pushing valve seat.
- Simple to use.

TECHNICAL DRAWING



ORDERING CODE	F	L	Ch.	WEIGHT (Kg/lbs)
HPV-101	1/4" BSP	47 (1.85)	19 (0.75)	0.08 (0.176)
HPV-102	3/8" BSP	46 (1.82)	22 (0.86)	0.10 (0.22)
HPV-103	1/2" BSP	51 (2.01)	27 (1.06)	0.16 (0.35)
HPV-104	3/4" BSP	62 (2.45)	36 (1.42)	0.34 (0.74)
HPV-105	1" BSP	65 (2.56)	41 (1.62)	0.44 (0.96)



TECHNICAL CHARACTERISTICS						mm (inch)
CODE	F	C	D	L	S	WEIGHT (Kg/lbs)
HPV-101K	1/4" BSP	8.2 (0.32)	2.5 (0.10)	8 (0.32)	1.5 (0.06)	0.006 (0.013)
HPV-101K	3/8" BSP	10.4 (0.41)	3 (0.12)	10.5 (0.41)	2 (0.08)	0.013 (0.028)
HPV-101K	1/2" BSP	12 (0.47)	4 (0.16)	13 (0.51)	2 (0.08)	0.025 (0.055)
HPV-101K	3/4" BSP	15.5 (0.61)	6 (0.24)	18 (0.71)	2 (0.08)	0.05 (0.11)
HPV-101K	1" BSP	21 (0.83)	7 (0.28)	20 (0.79)	4 (0.16)	0.097 (0.21)

ISO 8434-6 - ISO 1179-1