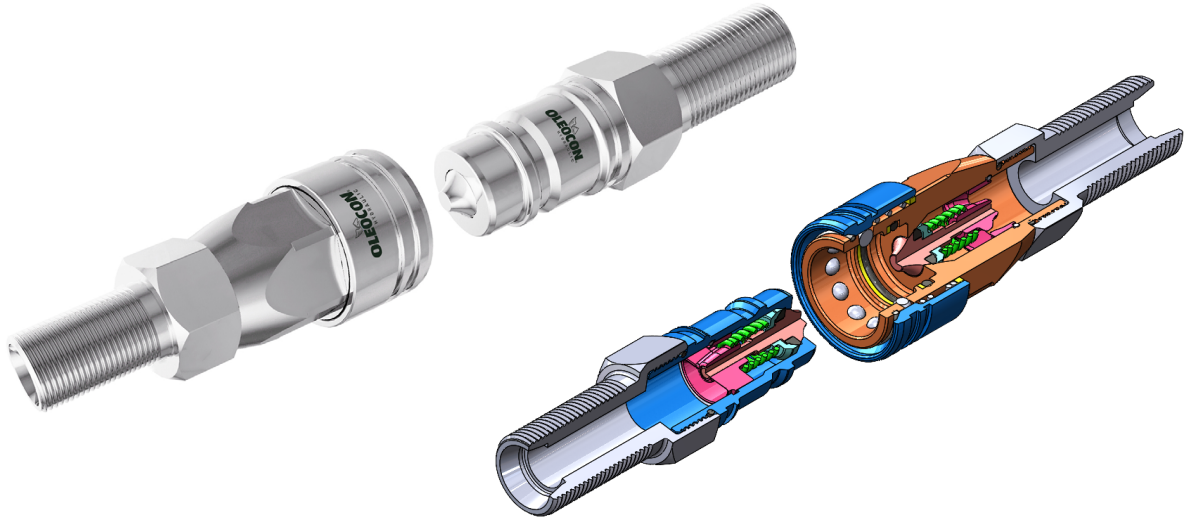


POPET TYPE - QCA SERIES

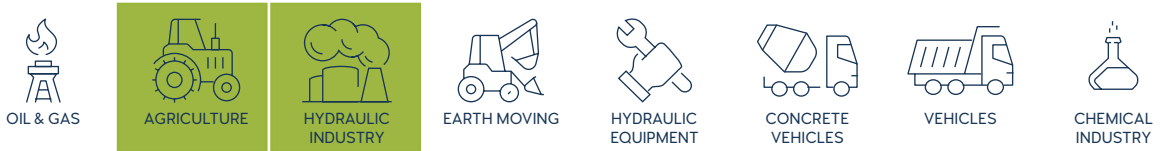


TECHNICAL FEATURES AND OPTIONS

3D SECTION

	Locking Mechanism Screw to Connect		Flow Rate Up to 757 l / min		Material Carbon Steel Stainless Steel Brass
	Working Temperature -20 °C / +90 °C		Interchange ISO 7241-A		Connection System Single Action Sleeve
	Operating Pressure Up to 315 Bar		Available Threads BSP - NPT - Metric - SAE		Connection Under Pressure Connction: not Allowed Disconnection: not Allowed
	Body Sizes ISO 6.3 - 50		Sealing Description NBR - FKM		Valving Style Popet

MAIN APPLICATIONS



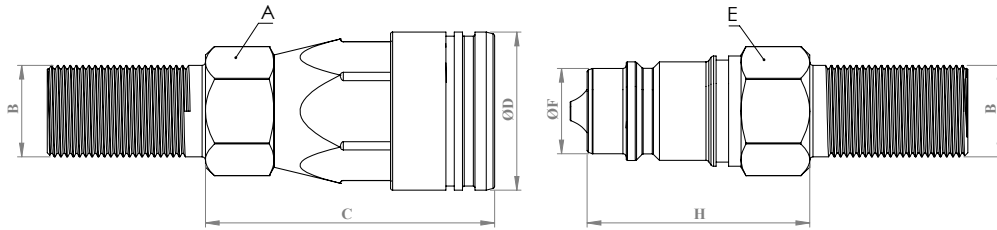
WARNING

- Connection or disconnection during flow and under dynamic pressure is not allowed.
- Connection or Disconnection is not allowed when the internal circuit temperature is higher than 80°C / 176°F
- Usage over the maximum working pressures is not allowed.
- Please ensure that the OLEOCON product series you have chosen is compatible with the temperature , material and pressure requirements of your system.
- Please contact with OLEOCON technical support for any further questions.

INFORMATION

- Do not connect or remove the counterparts under residual pressure.
- Top quality sealing rings provides high level of protection.
- The designs are developed to prevent pressure drops and turbulences.
- Durable and simple to use design.
- Please ensure the cleanliness of all connection surfaces to avoid dirt or dust accumulation in the circuit.
- Please ensure the alignment and full connection of male and female parts.

TECHNICAL DRAWING



BODY SIZE	DESCRIPTION	COUPLING GENDER	Hex		THREAD SIZE(B)	DIAMETER		LENGTH		WEIGHT				
				mm		inch		mm	inch	mm	inch	kg	lbs	
6,3	QCA-6A-M6L-BH	FEMALE	A	-	-	M12*1.5	D	-	-	C	-	-	-	-
	QCA-6B-M6L-BH	MALE	E	-	-	M12*1.5	F	-	-	H	-	-	-	-
10	QCA-10A-M8L-BH	FEMALE	A	24	0.94	M14*1.5	D	32	1.25	C	58	2.28	0.21	0.462
	QCA-10B-M8L-BH	MALE	E	22	0.86	M14*1.5	F	17.23	0.67	H	40	1.57	0.11	0.242
	QCA-10A-M10L-BH	FEMALE	A	24	0.94	M16*1.5	D	32	1.25	C	58	2.28	0.22	0.484
	QCA-10B-M10L-BH	MALE	E	22	0.86	M16*1.5	F	17.23	0.67	H	40	1.57	0.11	0.242
	QCA-10A-M12L-BH	FEMALE	A	24	0.94	M18*1.5	D	32	1.25	C	58	2.28	0.23	0.506
	QCA-10B-M12L-BH	MALE	E	22	0.86	M18*1.5	F	17.23	0.67	H	40	1.57	0.12	0.264
12,5	QCA-12A-M12L-BH	FEMALE	A	30	1.18	M18*1.5	D	38	1.49	C	69	2.71	0.32	0.704
	QCA-12B-M12L-BH	MALE	E	27	1.06	M18*1.5	F	20.48	0.80	H	47	1.85	0.15	0.33
	QCA-12A-M15L-BH	FEMALE	A	30	1.18	M22*1.5	D	38	1.49	C	69	2.71	0.34	0.748
	QCA-12B-M15L-BH	MALE	E	27	1.06	M22*1.5	F	20.48	0.80	H	47	1.85	0.18	0.396
	QCA-12A-M18L-BH	FEMALE	A	30	1.18	M26*1.5	D	38	1.49	C	69	2.71	0.39	0.858
	QCA-12B-M18L-BH	MALE	E	27	1.06	M26*1.5	F	20.48	0.80	H	47	1.85	0.22	0.484
20	QCA-20A-M15L-BH	FEMALE	A	38	1.49	M22*1.5	D	46.1	1.81	C	83	3.26	0.62	1.364
	QCA-20B-M15L-BH	MALE	E	36	1.41	M22*1.5	F	29	1.14	H	56	2.20	0.32	0.704
	QCA-20A-M18L-BH	FEMALE	A	38	1.49	M26*1.5	D	46.1	1.81	C	83	3.26	0.65	1.43
	QCA-20B-M18L-BH	MALE	E	36	1.41	M26*1.5	F	29	1.14	H	56	2.20	0.34	0.748
	QCA-20A-M22L-BH	FEMALE	A	38	1.49	M30*2	D	46.1	1.81	C	83	3.26	0.66	1.452
	QCA-20B-M22L-BH	MALE	E	36	1.41	M30*2	F	29	1.14	H	56	2.20	0.36	0.792

ISO 8434-1

BODY SIZE	WORKING PRESSURE						BURST PRESSURE					
	COUPLE		FEMALE		MALE		COUPLE		FEMALE		MALE	
	MPa	PSI	MPa	PSI	MPa	PSI	MPa	PSI	MPa	PSI	MPa	PSI
6	-	-	-	-	-	-	-	-	-	-	-	-
10	31.5	4567	31.5	4567	31.5	4567	126	18270	126	18270	126	18270
12,5	25	3625	25	3625	25	3625	100	14500	100	14500	100	14500
19	25	3625	25	3625	25	3625	100	14500	100	14500	100	14500
25	20	2900	20	2900	20	2900	80	11600	80	11600	80	11600
31,5	20	2900	20	2900	20	2900	80	11600	80	11600	80	11600
40	16	2320	16	2320	16	2320	64	9280	64	9280	64	9280
50	10	1450	10	1450	10	1450	40	5800	40	5800	40	5800

POPET TYPE - QCA SERIES



TECHNICAL FEATURES AND OPTIONS

3D SECTION

	<p>Locking Mechanism Screw to Connect</p>		<p>Flow Rate Up to 757 l / min</p>		<p>Material Carbon Steel Stainless Steel Brass</p>
	<p>Working Temperature -20 °C / +90 °C</p>		<p>Interchange ISO 7241-A</p>		<p>Connection System Single Action Sleeve</p>
	<p>Operating Pressure Up to 315 Bar</p>		<p>Available Threads BSP - NPT - Metric - SAE</p>		<p>Connection Under Pressure Connection: not Allowed Disconnection: not Allowed</p>
	<p>Body Sizes ISO 6.3 - 50</p>		<p>Sealing Description NBR - FKM</p>		<p>Valving Style Popet</p>

MAIN APPLICATIONS



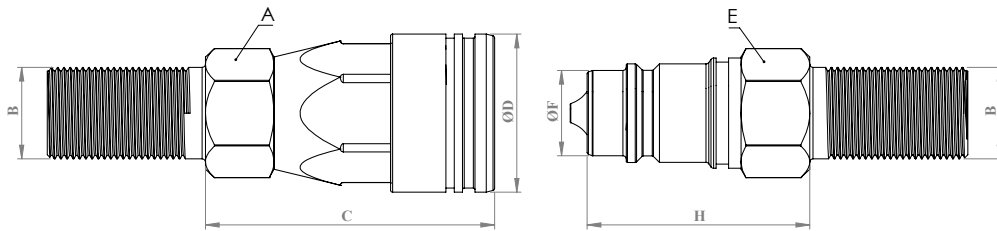
WARNING

- Connection or disconnection during flow and under dynamic pressure is not allowed.
- Connection or Disconnection is not allowed when the internal circuit temperature is higher than 80°C / 176°F
- Usage over the maximum working pressures is not allowed.
- Please ensure that the OLEOCON product series you have chosen is compatible with the temperature , material and pressure requirements of your system.
- Please contact with OLEOCON technical support for any further questions.

INFORMATION

- Do not connect or remove the counterparts under residual pressure.
- Top quality sealing rings provides high level of protection.
- The designs are developed to prevent pressure drops and turbulences.
- Durable and simple to use design.
- Please ensure the cleanliness of all connection surfaces to avoid dirt or dust accumulation in the circuit.
- Please ensure the alignment and full connection of male and female parts.

TECHNICAL DRAWING

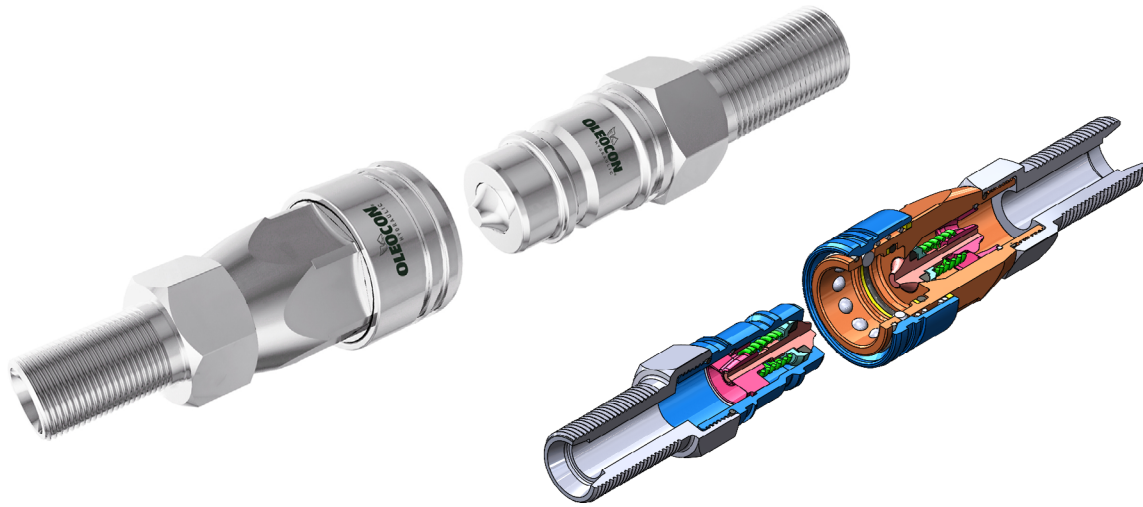


BODY SIZE	DESCRIPTION	COUPLING GENDER	Hex		THREAD SIZE(B)	DIAMETER		LENGTH		WEIGHT				
				mm		inch		mm	inch	mm	inch	kg	lbs	
25	QCA-25A-M18L-BH	FEMALE	A	46	1.81	M26*1.5	D	54	2.12	C	99.2	3.90	0.75	1.65
	QCA-25B-M18L-BH	MALE	E	41	1.61	M26*1.5	F	34.21	1.34	H	66	2.59	0.4	0.88
	QCA-25A-M22L-BH	FEMALE	A	46	1.81	M30*2	D	54	2.12	C	99.2	3.90	0.77	1.694
	QCA-25B-M22L-BH	MALE	E	41	1.61	M30*2	F	34.21	1.34	H	66	2.59	0.41	0.902
	QCA-25A-M28L-BH	FEMALE	A	46	1.81	M36*2	D	54	2.12	C	99.2	3.90	0.8	1.76
	QCA-25B-M28L-BH	MALE	E	41	1.61	M36*2	F	34.21	1.34	H	66	2.59	0.44	0.968
31.5	QCA-31A-M22L-BH	FEMALE	A	55	2.16	M30*2	D	68	2.67	C	117.2	4.61	1.35	2.97
	QCA-31B-M22L-BH	MALE	E	50	1.96	M30*2	F	44.9	44.9	H	75	2.95	0.52	1.144
	QCA-31A-M28L-BH	FEMALE	A	55	2.16	M36*2	D	68	2.67	C	117.2	4.61	1.36	2.992
	QCA-31B-M28L-BH	MALE	E	50	1.96	M36*2	F	44.9	44.9	H	75	2.95	0.53	1.166
	QCA-31A-M35L-BH	FEMALE	A	55	2.16	M45*2	D	68	2.67	C	117.2	4.61	1.37	3.014
	QCA-31B-M35L-BH	MALE	E	50	1.96	M45*2	F	44.9	44.9	H	75	2.95	0.53	1.166
40	QCA-40A-M35L-BH	FEMALE	A	70	2.75	M45*2	D	83	3.26	C	134.2	5.28	2.68	5.896
	QCA-40B-M35L-BH	MALE	E	60	2.36	M45*2	F	54.93	2.16	H	84	3.30	0.98	2.156
	QCA-40A-M42L-BH	FEMALE	A	70	2.75	M52*2	D	83	3.26	C	134.2	5.28	2.7	5.94
	QCA-40B-M42L-BH	MALE	E	60	2.36	M52*2	F	54.93	2.16	H	84	3.30	0.99	2.178
50	QCA-50A-M35L-BH	FEMALE	A	80	3.14	M45*2	D	99	3.89	C	160.2	6.30	3.9	8.58
	QCA-50B-M35L-BH	MALE	E	75	2.95	M45*2	F	65	2.55	H	97	3.81	1.5	3.3
	QCA-50A-M35L-BH	FEMALE	A	80	3.14	M52*2	D	99	3.89	C	160.2	6.30	3.91	8.602
	QCA-50B-M35L-BH	MALE	E	75	2.95	M52*2	F	65	2.55	H	97	3.81	1.51	3.322

ISO 8434-1

BODY SIZE	WORKING PRESSURE						BURST PRESSURE					
	COUPLE		FEMALE		MALE		COUPLE		FEMALE		MALE	
	MPa	PSI	MPa	PSI	MPa	PSI	MPa	PSI	MPa	PSI	MPa	PSI
6	-	-	-	-	-	-	-	-	-	-	-	-
10	31.5	4567	31.5	4567	31.5	4567	126	18270	126	18270	126	18270
12.5	25	3625	25	3625	25	3625	100	14500	100	14500	100	14500
19	25	3625	25	3625	25	3625	100	14500	100	14500	100	14500
25	20	2900	20	2900	20	2900	80	11600	80	11600	80	11600
31.5	20	2900	20	2900	20	2900	80	11600	80	11600	80	11600
40	16	2320	16	2320	16	2320	64	9280	64	9280	64	9280
50	10	1450	10	1450	10	1450	40	5800	40	5800	40	5800

POPET TYPE - QCA SERIES



TECHNICAL FEATURES AND OPTIONS

3D SECTION

	Locking Mechanism Screw to Connect		Flow Rate Up to 757 l / min		Material Carbon Steel Stainless Steel Brass
	Working Temperature -20 °C / +90 °C		Interchange ISO 7241-A		Connection System Single Action Sleeve
	Operating Pressure Up to 315 Bar		Available Threads BSP - NPT - Metric - SAE		Connection Under Pressure Connction: not Allowed Disconnection: not Allowed
	Body Sizes ISO 6.3 - 50		Sealing Description NBR - FKM		Valving Style Popet

MAIN APPLICATIONS



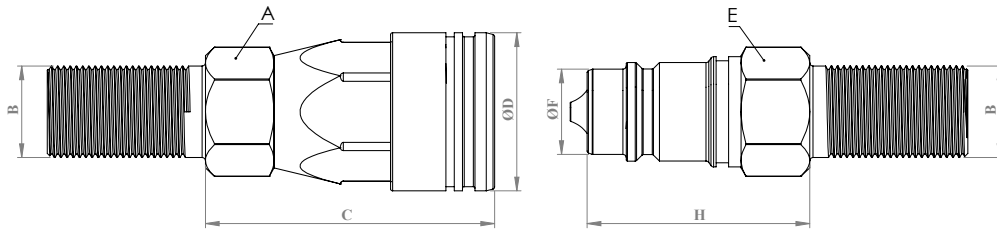
WARNING

- Connection or disconnection during flow and under dynamic pressure is not allowed.
- Connection or Disconnection is not allowed when the internal circuit temperature is higher than 80°C / 176°F
- Usage over the maximum working pressures is not allowed.
- Please ensure that the OLEOCON product series you have chosen is compatible with the temperature , material and pressure requirements of your system.
- Please contact with OLEOCON technical support for any further questions.

INFORMATION

- Do not connect or remove the counterparts under residual pressure.
- Top quality sealing rings provides high level of protection.
- The designs are developed to prevent pressure drops and turbulences.
- Durable and simple to use design.
- Please ensure the cleanliness of all connection surfaces to avoid dirt or dust accumulation in the circuit.
- Please ensure the alignment and full connection of male and female parts.

TECHNICAL DRAWING

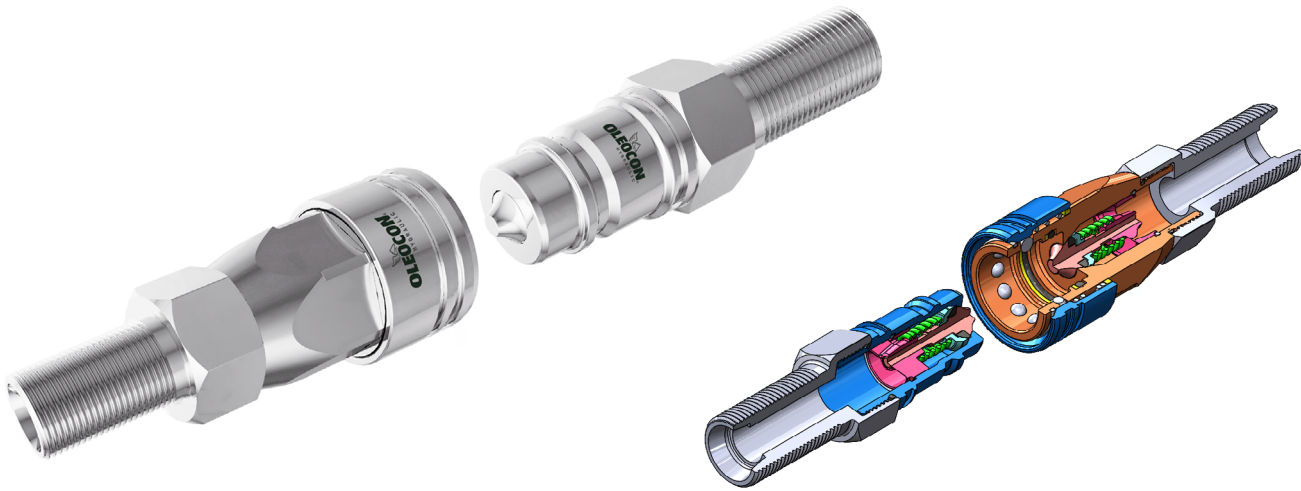


BODY SIZE	DESCRIPTION	COUPLING GENDER	Hex		THREAD SIZE(B)	DIAMETER		LENGTH		WEIGHT				
			mm	inch		mm	inch	mm	inch	kg	lbs			
6,3	QCA-6A-M6S-BH	FEMALE	A	-	-	M14*1.5	D	-	-	C	-	-	-	-
	QCA-6B-M6S-BH	MALE	E	-	-	M14*1.5	F	-	-	H	-	-	-	-
10	QCA-10A-M8S-BH	FEMALE	A	24	0.94	M16*1.5	D	32	1.25	C	58	2.28	0.23	0.506
	QCA-10B-M8S-BH	MALE	E	22	0.86	M16*1.5	F	17.23	0.67	H	40	1.57	0.13	0.286
	QCA-10A-M10S-BH	FEMALE	A	24	0.94	M18*1.5	D	32	1.25	C	58	2.28	0.24	0.528
	QCA-10B-M10S-BH	MALE	E	22	0.86	M18*1.5	F	17.23	0.67	H	40	1.57	0.13	0.286
	QCA-10A-M12S-BH	FEMALE	A	24	0.94	M20*1.5	D	32	1.25	C	58	2.28	0.25	0.55
	QCA-10B-M12S-BH	MALE	E	22	0.86	M20*1.5	F	17.23	0.67	H	40	1.57	0.15	0.33
12,5	QCA-12A-M10S-BH	FEMALE	A	30	1.18	M18*1.5	D	38	1.49	C	69	2.71	0.33	0.726
	QCA-12B-M10S-BH	MALE	E	27	1.06	M18*1.5	F	20.48	0.80	H	47	1.85	0.16	0.352
	QCA-12A-M12S-BH	FEMALE	A	30	1.18	M20*1.5	D	38	1.49	C	69	2.71	0.34	0.748
	QCA-12B-M12S-BH	MALE	E	27	1.06	M20*1.5	F	20.48	0.80	H	47	1.85	0.18	0.396
	QCA-12A-M16S-BH	FEMALE	A	30	1.18	M24*1.5	D	38	1.49	C	69	2.71	0.38	0.836
	QCA-12B-M16S-BH	MALE	E	27	1.06	M24*1.5	F	20.48	0.80	H	47	1.85	0.22	0.484
20	QCA-20A-M12S-BH	FEMALE	A	38	1.49	M20*1.5	D	46.1	1.81	C	83	3.26	0.62	1.364
	QCA-20B-M12S-BH	MALE	E	36	1.41	M20*1.5	F	29	1.14	H	56	2.20	0.32	0.704
	QCA-20A-M16S-BH	FEMALE	A	38	1.49	M24*1.5	D	46.1	1.81	C	83	3.26	0.65	1.43
	QCA-20B-M16S-BH	MALE	E	36	1.41	M24*1.5	F	29	1.14	H	56	2.20	0.34	0.748
	QCA-20A-M20S-BH	FEMALE	A	38	1.49	M30*2	D	46.1	1.81	C	83	3.26	0.7	1.54
	QCA-20B-M20S-BH	MALE	E	36	1.41	M30*2	F	29	1.14	H	56	2.20	0.39	0.858

ISO 8434-1

BODY SIZE	WORKING PRESSURE						BURST PRESSURE						
	COUPLE		FEMALE		MALE		COUPLE		FEMALE		MALE		
	MPa	PSI	MPa	PSI	MPa	PSI	MPa	PSI	MPa	PSI	MPa	PSI	
6	-	-	-	-	-	-	-	-	-	-	-	-	-
10	31.5	4567	31.5	4567	31.5	4567	126	18270	126	18270	126	18270	
12,5	25	3625	25	3625	25	3625	100	14500	100	14500	100	14500	
19	25	3625	25	3625	25	3625	100	14500	100	14500	100	14500	
25	20	2900	20	2900	20	2900	80	11600	80	11600	80	11600	
31,5	20	2900	20	2900	20	2900	80	11600	80	11600	80	11600	
40	16	2320	16	2320	16	2320	64	9280	64	9280	64	9280	
50	10	1450	10	1450	10	1450	40	5800	40	5800	40	5800	

POPET TYPE - QCA SERIES



TECHNICAL FEATURES AND OPTIONS

3D SECTION

	Locking Mechanism Screw to Connect		Flow Rate Up to 757 l / min		Material Carbon Steel Stainless Steel Brass
	Working Temperature -20 °C / +90 °C		Interchange ISO 7241-A		Connection System Single Action Sleeve
	Operating Pressure Up to 315 Bar		Available Threads BSP - NPT - Metric - SAE		Connection Under Pressure Connction: not Allowed Disconnection: not Allowed
	Body Sizes ISO 6.3 - 50		Sealing Description NBR - FKM		Valving Style Popet

MAIN APPLICATIONS



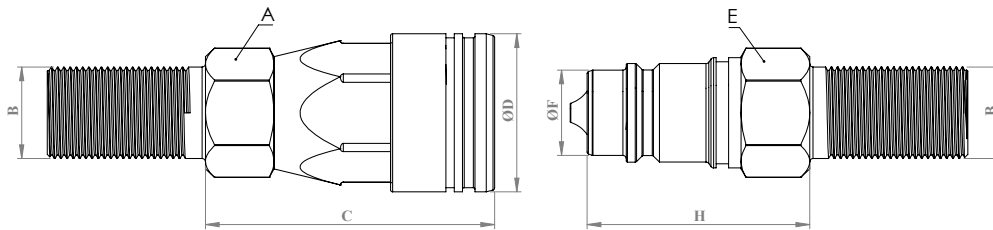
WARNING

- Connection or disconnection during flow and under dynamic pressure is not allowed.
- Connection or Disconnection is not allowed when the internal circuit temperature is higher than 80°C / 176°F
- Usage over the maximum working pressures is not allowed.
- Please ensure that the OLEOCON product series you have chosen is compatible with the temperature , material and pressure requirements of your system.
- Please contact with OLEOCON technical support for any further questions.

INFORMATION

- Do not connect or remove the counterparts under residual pressure.
- Top quality sealing rings provides high level of protection.
- The designs are developed to prevent pressure drops and turbulences.
- Durable and simple to use design.
- Please ensure the cleanliness of all connection surfaces to avoid dirt or dust accumulation in the circuit.
- Please ensure the alignment and full connection of male and female parts.

TECHNICAL DRAWING



BODY SIZE	DESCRIPTION	COUPLING GENDER	Hex		THREAD SIZE(B)	DIAMETER		LENGTH		WEIGHT				
				mm		inch		mm	inch	mm	inch	kg	lbs	
25	QCA-25A-M16S-BH	FEMALE	A	46	1.81	M24*1.5	D	54	2.12	C	99.2	3.90	0.75	1.65
	QCA-25B-M16S-BH	MALE	E	41	1.61	M24*1.5	F	34.21	1.34	H	66	2.59	0.4	0.88
	QCA-25A-M20S-BH	FEMALE	A	46	1.81	M30*2	D	54	2.12	C	99.2	3.90	0.8	1.76
	QCA-25B-M20S-BH	MALE	E	41	1.61	M30*2	F	34.21	1.34	H	66	2.59	0.45	0.99
	QCA-25A-M25S-BH	FEMALE	A	46	1.81	M36*2	D	54	2.12	C	99.2	3.90	0.87	1.914
	QCA-25B-M25S-BH	MALE	E	41	1.61	M36*2	F	34.21	1.34	H	66	2.59	0.51	1.122
31.5	QCA-31A-M20S-BH	FEMALE	A	55	2.16	M30*2	D	68	2.67	C	117.2	4.61	1.3	2.86
	QCA-31B-M20S-BH	MALE	E	50	1.96	M30*2	F	44.9	44.9	H	75	2.95	0.52	1.144
	QCA-31A-M25S-BH	FEMALE	A	55	2.16	M36*2	D	68	2.67	C	117.2	4.61	1.31	2.882
	QCA-31B-M25S-BH	MALE	E	50	1.96	M36*2	F	44.9	44.9	H	75	2.95	0.52	1.144
	QCA-31A-M30S-BH	FEMALE	A	55	2.16	M42*2	D	68	2.67	C	117.2	4.61	1.32	2.904
	QCA-31B-M30S-BH	MALE	E	50	1.96	M42*2	F	44.9	44.9	H	75	2.95	0.53	1.166
40	QCA-40A-M30S-BH	FEMALE	A	70	2.75	M42*2	D	83	3.26	C	134.2	5.28	2.68	5.896
	QCA-40B-M30S-BH	MALE	E	60	2.36	M42*2	F	54.93	2.16	H	84	3.30	0.97	2.134
	QCA-40A-M38S-BH	FEMALE	A	70	2.75	M52*2	D	83	3.26	C	134.2	5.28	2.68	5.896
	QCA-40B-M38S-BH	MALE	E	60	2.36	M52*2	F	54.93	2.16	H	84	3.30	0.98	2.156
50	QCA-50A-M30S-BH	FEMALE	A	80	3.14	M42*2	D	99	3.89	C	160.2	6.30	3.9	8.58
	QCA-50B-M30S-BH	MALE	E	75	2.95	M42*2	F	65	2.55	H	97	3.81	1.5	3.3
	QCA-50A-M38SBH	FEMALE	A	80	3.14	M52*2	D	99	3.89	C	160.2	6.30	2.91	6.402
	QCA-50B-M38S-BH	MALE	E	75	2.95	M52*2	F	65	2.55	H	97	3.81	1.51	3.322

ISO 8434-1

BODY SIZE	WORKING PRESSURE						BURST PRESSURE					
	COUPLE		FEMALE		MALE		COUPLE		FEMALE		MALE	
	MPa	PSI	MPa	PSI	MPa	PSI	MPa	PSI	MPa	PSI	MPa	PSI
6	-	-	-	-	-	-	-	-	-	-	-	-
10	31.5	4567	31.5	4567	31.5	4567	126	18270	126	18270	126	18270
12.5	25	3625	25	3625	25	3625	100	14500	100	14500	100	14500
19	25	3625	25	3625	25	3625	100	14500	100	14500	100	14500
25	20	2900	20	2900	20	2900	80	11600	80	11600	80	11600
31.5	20	2900	20	2900	20	2900	80	11600	80	11600	80	11600
40	16	2320	16	2320	16	2320	64	9280	64	9280	64	9280
50	10	1450	10	1450	10	1450	40	5800	40	5800	40	5800